

## **Historic, archived document**

Do not assume content reflects current scientific knowledge, policies, or practices.





SPRING

1938

The  
Good & Reese  
**Blue Book**  
for FLORISTS

**GOOD & REESE, INC.**

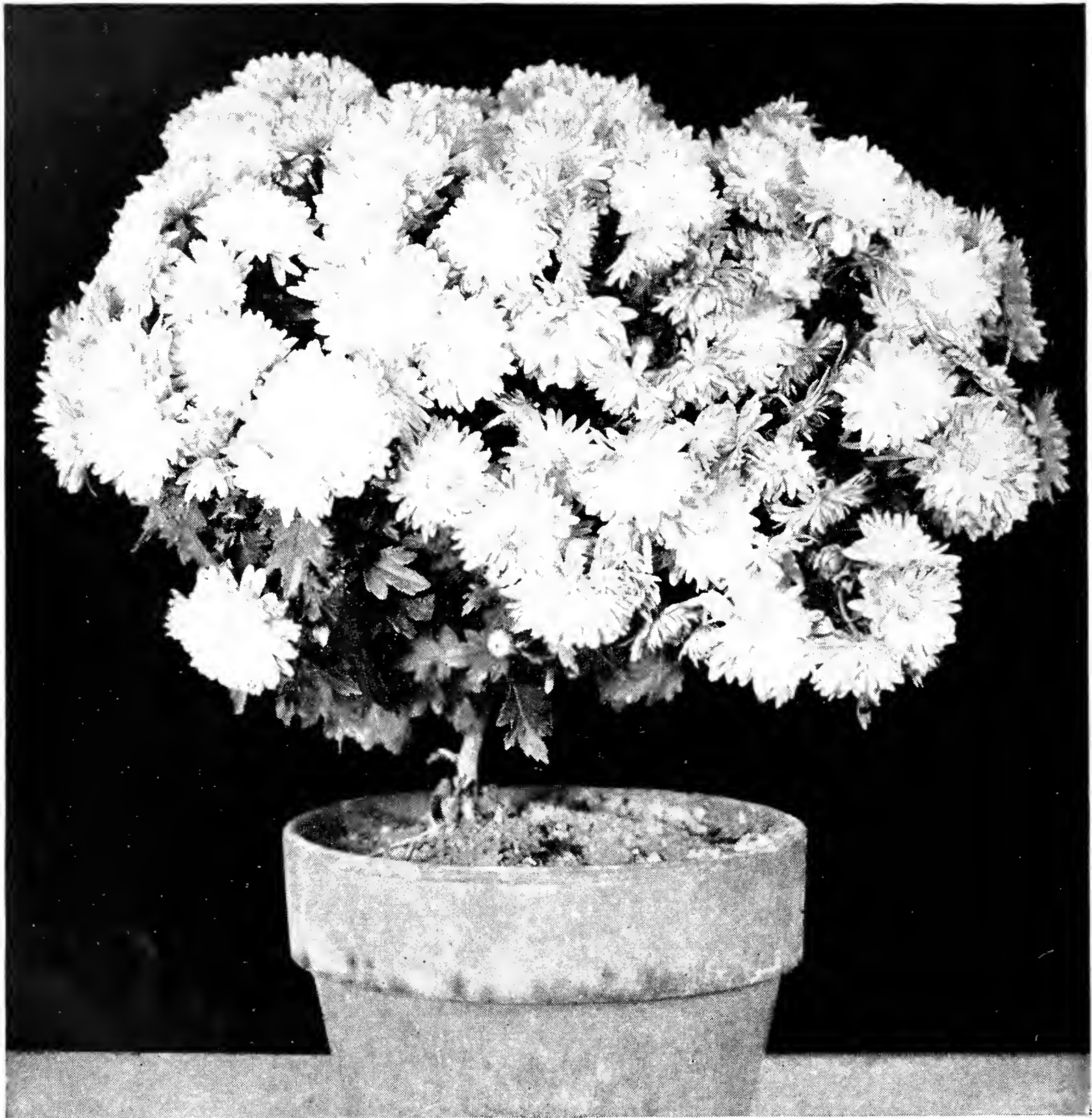
*America's Largest Growers of Greenhouse Plants*

**SPRINGFIELD, OHIO**

ESTABLISHED 1888

# PINK CUSHION

The Azalea Flowered Chrysanthemum



**A**T THE Century of Progress Exhibition in Chicago this beautiful new Chrysanthemum created sensational interest. The plant is dwarf and spreading in growth, very hardy, and far more prolific than any other variety. When well established, single plants of Pink Cushion have been known to have 1500 flowers open at one time. In color it is of a very pleasing rose pink. Pink Cushion produces its first flowers in late August and continues to be a mass of blazing glory until late frost. We consider Pink Cushion the finest outdoor Chrysanthemum; for the florist it makes an exceptionally fine pot plant. You will profit by offering Pink Cushion to your trade in 1938.

**Rooted Cuttings, \$4.00 per 100, \$35.00 per 1000**  
**Plants from 2¼ in. pots, \$5.50 per 100, \$50.00 per 1000**

FIRST OFFERING OF  
**BUDDLEIA HARTWEGI**  
 THE FINEST OF THE BUTTERFLY BUSHES

**B**UDDLEIA HARTWEGI is undoubtedly the finest of all the summer flowering Butterfly Bushes. As a summer cut flower plant and as an ornamental lawn shrub it is unsurpassed in beauty and usefulness. The large bright lavender panicles have remarkable substance and harmonize in arrangement with other summer flowers. The flowers do not "sunburn" as do the other Davidii varieties, and the tip flowers on the panicle open before the basal flowers have faded. The individual flowers are closely spaced on the panicles, imparting a compact and pleasing appearance. The foliage is very heavy and is rich dark green.

Buddleia Hartwegi is hardier than any of the summer flowering Butterfly Bushes, having lived through the severe winter of 1935-1936 without protection and with only slight loss.

As a summer cut flower, Hartwegi is unsurpassed. Read the following excerpt from the Florists' Review of September 2nd, 1937, (Boston newsletter): "Buddleia Hartwegi is seen in fine shape and brings 75c per bunch; other varieties run from 20c upward."



Beautiful Hartwegi

**PLANTS FROM 2¼ INCH POTS**

**\$2.00 per 12, \$15.00 per 100, \$140.00 per 1000.**

**6 to 25 plants will be supplied at the dozen rate, 25 or more at the 100 rate, 250 or more at the 1000 rate.**

It is requested that retail prices be maintained at 75c each, 3 for \$2.00

## OUR GOLDEN ANNIVERSARY

Springfield, Ohio  
Spring 1938

To Our Customers and Friends:

Fifty years! What an eventful period it has been. We are proud, indeed, that from one small greenhouse in 1888 has developed the largest business of its kind in the world—fifty-six greenhouses and two hundred acres of nurseries devoted to the growing of plants for American homes and gardens. Our first catalog offered two hundred varieties of plants—today over three thousand—the widest variety of plant materials obtainable in America.

We take this opportunity to express our appreciation to our customers who have made our existence successful. Today, as in all these past years, the aim of this concern is unquestioned satisfaction on the part of every customer. Many of our customers have planted G & R stock for thirty to forty years—a fact which ably speaks for the quality and dependability of our plants.

Your orders are packed in our establishment under personal supervision. A staff of trained and experienced men and women carry out the work from growing to the packing and shipping of orders.

Again we thank you and wish you success and prosperity during the coming year.

Cordially yours,

## GOOD & REESE, Inc.

SPRINGFIELD, OHIO

### IMPORTANT NOTICE

As a protection to our customers who are entitled to Wholesale or Florists' prices, we ask that they do not lend this catalogue to retail buyers. Offers in this catalogue are extended only to those engaged in the trade. We reserve the right to refuse to fill orders for those not entitled to these prices.

### TERMS

Three per cent discount for cash with order. Two per cent ten days. All bills due net 30 days. Purchasers desiring to open an account will please furnish trade references. No claims recognized unless made within 5 days of receipt of goods.

C. O. D. shipments must be accompanied by 25 per cent of amount of order.

All prices quoted F. O. B. Springfield, Ohio. No packing charge.

All goods offered subject to prior sale.

All advance orders accepted subject to crop failure and other causes beyond our control. Should shortage occur, we reserve the right to fill the orders pro rata.

Good & Reese, Inc., gives no warranty, expressed or implied, as to productiveness of any plants, bulbs, or seeds. Should any prove to be untrue to name, we agree to replace those found untrue, but in no case will we be held accountable for more than the invoice price paid by the customer for the untrue stock.

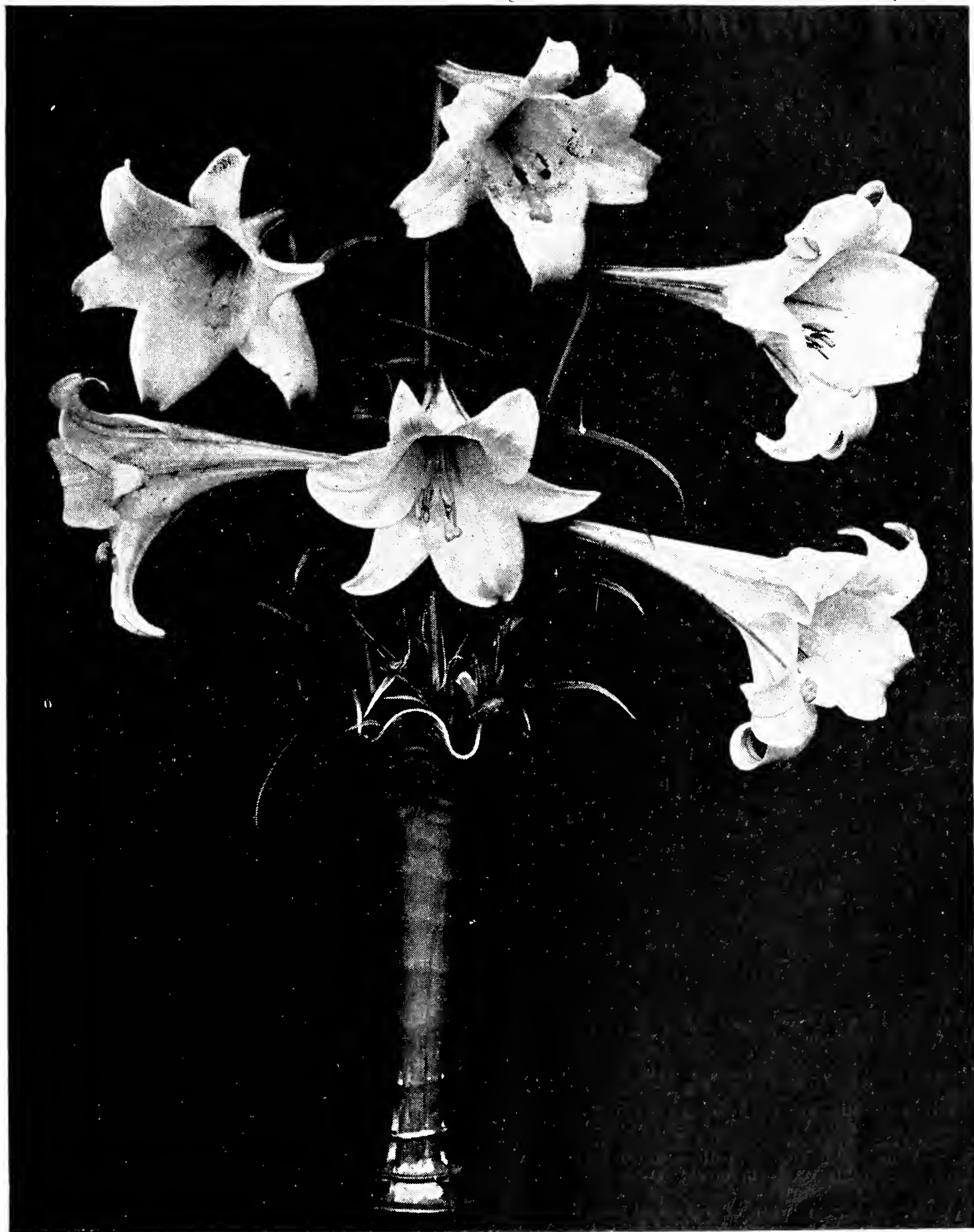
**No plant orders filled at these prices for less than 6 of a variety, except as noted. Less than 25 of a variety filled at dozen rates. 25 to 200 of a variety at hundred rates. Over 200 of a variety at thousand rates, where thousand rates are quoted.**

## INDEX

	page		page
Amaryllis .....	32	Hydrangeas .....	20
Buddleia .....	1 and 21	Iris .....	34 and 35
Cannas .....	35	Lilium Philippinense.....	3
Carnation Imp. Crimson King.....	18	Miniature Garden Plants.....	19
Chinese Evergreen .....	19	Pachysandra .....	21
Chrysanthemums .....	22 to 25	Pansy .....	21
Clematis .....	35	Peony .....	33
Dahlias .....	26 to 28	Phlox .....	20
Ferns .....	16	Rosa Rouletti .....	8
Geraniums .....	17	Roses .....	4 to 10
Gladiolus .....	36	Saintpaulias .....	15
Greenhouse Plants .....	11 to 15	Tritomas .....	Inside Back Cover
Gypsophila Bristol Fairy.....	Back Cover	Vinca Minor .....	21
Hardy Perennials .....	29 to 32		

# Lilium Philippinense Formosanum

## The New Wonder Lily



**A** MOST WONDERFUL LILY with gorgeous white flowers. Of the same size as the Easter Lily and with delightful fragrance. It is perfectly hardy and flowers in the summer and fall. Every florist should have this new lily for both cutting and retail sales.

**Blooming size bulbs, \$1.20 per 12, \$8.00 per 100**

# Good & Reese Own Root Roses

The roses in this list are summer-propagated on their own roots and are winter rested in cool greenhouses. They may be expected to give excellent results. We advise the early placing of your order as we oftentimes sell out early on certain varieties. Early ordering entails no additional expense and no disappointment. Place your order now.

## OWN ROOT, SUMMER-PROPAGATED, WINTER-RESTED ROSES

FROM 2 1/4 INCH AND 4 INCH POTS

2 1/4 Inch—Pot Roses are Strong, Well-Established, Young Plants with Heavy Fibrous Roots, Grown Under Glass, Suitable for Lining Out, Benching, Shifting and Re-Sale Purposes.

4 Inch—Pot Roses are Heavily Rooted, Well-Established Plants, Grown Under Glass and are suitable for Forcing as Blooming Plants, Bedding, Landscape Work and Re-Sale Purposes.

ABBREVIATIONS USED—Per., Pernetiana; B., Bourbon; C., China or Bengal; C. B. Climbing Bourbon; C. H. Poly., Climbing Hybrid Polyantha; C. H. T., Climbing Hybrid Tea; C. Poly., Climbing Polyantha; C. T., Climbing Tea; S. C. T., Semi-Climbing Texas; H. N., Hybrid Noisette; H. P., Hybrid Perpetual; H. Poly., Hybrid Polyantha; H. T., Hybrid Tea; L. Laevigata or Cherokee; Bks., Banksia; M., Moss; Mtf., Multiflora; H. Mtf., Hybrid Multiflora; C. N., Climbing Noisettes; Poly., Polyantha; R., Rugosa; T., Tea; W. Wichuraiana; H. W., Hybrid Wichuraianas; H. C., Hardy Climbers.



Beautiful Bessie Brown

## Hybrid Tea Roses

(FOR PRICES SEE PAGES 9 AND 10)

(OWN ROOT STOCK)

**ANTOINE RIVOIRE (H. T.)**—Called by the trade Mrs. Taft. Rosy-flesh on yellow ground.

**BESSIE BROWN**—Creamy white flowers, sweetly scented.

**BRIARCLIFF (H. T.)**—Bud one-third longer than Columbia, very large, long pointed flower 4 1/2 inches across, high center, lasting, moderate fragrance, deep rose-pink at center, passing to lighter on outer petals, with a touch of citron-green at base, borne singly on long, strong stem.

**CALEDONIA (H. T.)**—Large flowers of very full double flowers of pure white. A new variety that is fast becoming very popular.

**COLUMBIA (H. T.)**—It is a big Rose. The color is a true pink, about the shade of a perfect Shawyer, deepening as it opens to glowing pink.

**CRIMSON QUEEN (H. T.)**—Strong, upright grower, flowers large and full. Color a rich, bright velvety crimson. A grand garden Rose, always in bloom.

**CRUSADER (H. T.)**—A big, strong growing variety, robust and rugged in every characteristic; the growth is heavy and the flower stems strong and heavy. It is free flowering and the blooms are big and double, and in color a rich velvety crimson. A free flowering red Rose that is a wonder.

**CHARLES K. DOUGLAS (H. T.)**—Bud large, long pointed; flower large, full, double, sweet fragrance; color, intense flaming scarlet, flushed bright velvety crimson. Foliage dark green; disease resistant; vigorous, upright grower, produces an abundance of blooms from June to October.

**DAME EDITH HELEN (H. T.)**—A Gold Medal winner at several flower shows. One of the most valuable additions to the Hybrid Tea class. The color is a brilliant yet soft pink, and the flower is delightfully sweet scented. A strong plant of vigorous constitution. The flowers are produced singly on well foliated strong canes throughout the season, and are of immense size.

**DUCHESS OF WELLINGTON (H. T.)**—Intense saffron yellow, stained with rich crimson.

**E. G. HILL (H. T.)**—A new Red Rose, originated by Mr. E. G. Hill. Color is a dazzling scarlet shading to deeper red. Originator claims it never turns purple. Undoubtedly a fine new red Rose.

**ETOILE DE FRANCE (H. T.)**—Color a lovely shade of clear, red-crimson velvet; very fragrant.

**ETOILE DE HOLLAND (H. T.)**—Flower bright red, of medium size, fairly full, deliciously perfumed; growth vigorous, upright. A rose of great future.

**FRANCIS SCOTT KEY (H. T.)**—An American seedling, raised by John Cook. It is a heavy double Rose of great substance. In color, red. It shows good growing characteristics and is undoubtedly a valuable variety.



# Hybrid Tea Roses (Continued)

FOR PRICES SEE PAGES 9 TO 10

(OWN ROOT STOCK)

**GOLDEN OPHELIA (H. T.)**—This is a sturdy, stiff-stemmed grower, with beautiful foliage, quite closely set, and glossy. The flower is of medium size from a beautifully formed bud of bright golden yellow. Profuse bloomer.

**GRUSS AN TEPLITZ (H. T.)**—Bright crimson, fiery-red center cup-shaped; semi-double; flowers in clusters; so free in bloom as to present a blaze of scarlet.

**HELEN GOULD or BALDWIN (H. T.)**—This is a grand Rose of the very highest merit for the garden; bright watermelon-red; very free grower and bloomer.

**HERMOSA (Bourbon)**—Pleasing shade of bright pink; fine for pot and garden culture.

**JONKHEER J. L. MOCK (H. T.)**—This grand Rose is the strongest growing in the Hybrid Tea class. The blooms, which are produced with the greatest freedom, are carried on stiff and erect stems, and are of the largest size, of perfect formation and highly perfumed. Color clear imperial-pink; a glorious flower.

**KAISERIN AUGUSTA VICTORIA (H. T.)**—Pure white, with shadings of primrose-yellow.

**KILLARNEY (H. T.)**—The finest pink forcing Rose ever introduced. In coloring it is especially beautiful.

**K. of K.—KITCHENER OF KHARTUM (H. T.)**—Flower of absolutely pure intense scarlet color, its huge petals are velvet sheened, solid scarlet throughout, semi-single, the blooms are produced in great profusion throughout the season, and are deliciously perfumed.

**LA CHAMPAGNE (H. T.)**—A meritorious and distinct variety of strong, robust habit, with large long buds of beautiful shape, which develop into good full bloom, color bright chamois, shading to yellow with apricot at center and peach-blossom reflex and yellow base.

**LA FRANCE**—The Queen of all Roses. Beautiful bright silvery-pink with pale lilac shading.

**LADY URSULA**—Color a most beautiful shade of flesh-pink of great substance and good form.

**LAURENT CARLE**—Color brilliant velvety carmine. A very promising variety.

**LOUIS PHILLIPE (China)**—An old standby. Velvety-crimson. Abundant bloomer.

**MADMOISELLE HELENE CAMBIER**—Grand flower, opens orange-yellow, changing to yellow.

**METEOR**—Dark velvety crimson, shaded maroon. A grand garden Rose.

**MME. BUTTERFLY (H. T.)**—A sport of Ophelia with better growth, more and larger flowers. Color bright pink suffused with apricot and gold. Good growth and habit.

**MME. CAROLINE TESTOUT**—Clear bright satiny-pink; flowers very large and extremely showy.

**MRS. AARON WARD**—Coppery-orange in the open bud, golden-orange when partly developed, pinkish fawn of lovely shade when fully open, when it looks like a full, fluffy-silk rosette.

**MRS. CHARLES BELL**—It may be described as a shell-pink Radiance, and is a sport of that well-known Rose. It has no characteristics which make it distinct from Radiance except that it is shell pink. Mrs. Chas. Bell, Red Radiance and Radiance offer a range of color that will be welcome, and there are no finer garden Roses for America than these three.

**OPHELIA**—Salmon-flesh, shaded with rose, large and of perfect shape; of excellent habit; the flowers standing up well on long, stiff stems and produced in great profusion. Excellent for forcing and a fine decorative variety.

**PRESIDENT HOOVER (H. T.)**—The Rose of wonderful colors. It is remarkable for its vigorous growth and beautiful colorings. A happy blend of orange and pink, varying in tone from coppery-red in the bud, to glowing orange-yellow at the base of the petals, suffused with vivid rose pink.

**PRESIDENT TAFT**—It is without question the most remarkable of all pink Roses. It has a shining, intense deep pink color possessed by no other Rose.

**RADIANCE**—(H. T.)—Brilliant rose-pink buds, opening to well-formed shining flowers with lighter tints on the reverse of the petals; globular in shape and very fragrant. The plant makes splendid growth, has wonderful blooming qualities.



Popular Red Columbia

**RAPTURE**—(H. T.)—Sport from Ophelia (a very striking sport and fancy colored rose). It is intensely brilliant with its colorings of bright apricot, coral, rose and gold, and blooms very profusely.

**RED COLUMBIA (H. T.)**—A brilliant scarlet-crimson of exquisite shade, a sport from Columbia; semi-double, one of the freest bloomers in existence; produces beautiful foliage in profusion.

**RED LETTER DAY**—An exceedingly beautiful Rose of infinite grace and charm. Its velvety, brilliant glowing scarlet-crimson buds and fully opened cactus-like flowers never fade, as the reflex of the petals is satiny crimson-scarlet.

**RED RADIANCE (H. T.)**—An even better Rose than its parent, Radiance, in habit, bearing big, globular flowers of deep rose-red on strong, individual canes which are freely produced all summer until frost.

**REV. F. PAGE ROBERTS (H. T.)**—A fine rose of a vigorous habit with good shaped blooms, which are carried erect on long, stiff stems, and are very sweetly scented. The color is an orange-yellow, becoming lighter at the edges of the petals. It is an excellent exhibition and garden rose.

**RHEA REID**—Flowers large and double; rich dark velvety red; a good red garden Rose.

**SOUVENIR DE LA MALMAISON (Bourbon)**—Blush-white shaded flesh; large and very double; sweetly scented.

**SUNBURST**—The color is orange-copper or golden-orange and golden-yellow; edge of petals lighter, all intense shades, extremely brilliant in effect. Some call the color cadmium-yellow. It is the brightest yellow of all Roses in the ever-blooming class.

**TALISMAN (Montgomery Co., 1929)**—It is a most remarkable piece of coloring; a combination of shadings of gold, apricot, yellow, deep pink and old rose. The bud is long, well formed and develops into full double flowers. The plant is a strong grower, with glossy green foliage and free flowering.

**TEMPLAR (H. T.)**—Bud medium size, globular; flower medium size, double globular, very lasting. Vigorous, upright, abundant and continuous bloomer. A new forcing Rose which is making its way into the garden. Clear bright red, of exceeding double form and with fine strong stems. Few thorns. Perfumed.

**WHITE KILLARNEY**—Bunches of it during the winter give the appearance of a bank of snow. It is pure white in color, long in bud, of fine form.

**WHITE LA FRANCE, or AUGUSTINE GUINOISSEAU**—Beautiful light fawn color, almost white; rightly described as an almost white La France. Extra fine.

# The Best New and Old Hardy Climbing Roses of Various Types

FOR PRICES SEE PAGES 9 TO 10

(OWN ROOT STOCK)

**ALIDA LOVETT (H. W.)**—Both buds and flowers are large; of ideal form, are held on stiff stems a foot and a half to two feet long and the color is a lively bright shell-pink with shadings of rich sulphur at the base of the petals. The flowers are of remarkable substance and long-lived, whether cut or left to remain upon the plant, and are pleasantly perfumed.

**AMERICAN PILLAR (H. M.)**—A single flowering variety of great beauty. The flowers are of enormous size three to four inches across, of a lovely shade of apple-blossom pink, with a clear white eye and clusters of yellow stamens. These flowers are borne in immense bunches, and a large plant in full bloom is a sight not easily forgotten.

**CHAPLIN'S PINK CLIMBER**—A very important addition to the list of hardy climbers. Rose experts pronounce it to be the best hardy climber introduced in many years. Its popularity is already assured. Large flowers of a clear lively pink borne on large trusses.

**CLIMBING AMERICAN BEAUTY (H. W.)**—Same color, size and fragrance as American Beauty, with the addition of the climbing habit. Good foliage and better blooming qualities. One plant of this new Rose will produce twenty times as many flowers in June as the old American Beauty.

**CLIMBING WHITE AMERICAN BEAUTY (H. W.)**—A hardy disease-resistant variety; vigorous growth and great freedom of bloom. It is much more double than Silver Moon, with but one flower to a stem. Has excellent keeping qualities.

**CRIMSON RAMBLER (C. P.)**—Bright crimson flowers produced in large clusters of pyramidal form; grand variety for pillars and arches and to train over porches; also makes a fine attractive hedge.

**DOROTHY PERKINS (H. W.)**—A most beautiful deep pink; the flowers are borne in large clusters of small double blooms and are very sweetly scented, quite first class.

**DR. HUEY (H. W.)**—Bud medium size; semi-double; borne in clusters of 3 or 4 on good stems; lasting. Color, dark crimson-maroon, of great brilliancy; stamens and anthers light yellow. Blooms continuously for three weeks.

**DR. W. VAN FLEET (H. W.)**—Flowers when open run four inches and over in diameter. The center is built high, petals beautifully undulated and cupped. The color is a remarkable delicate shade of flesh-pink on the outer surface, deepening to rosy-flesh in the center.

**EUGENE JACQUET**—The earliest and most profuse flowering of all the climbers and of the easiest cultivation. Almost every eye produces a handsome truss of fragrant, cherry-red flowers. Eugene Jacquet can be bloomed in February without difficulty. It flowers a week earlier than Tausendschoen or Rosarie under the same conditions and carries handsome, dark green, mildew resisting foliage. It holds the flowers unusually long—the color improves with age. Eugene Jacquet should be forced so as to show color ten days before Easter to be at its best for Easter sales.

**GARDENIA (H. W.)**—Bright yellow, cream color when open; very fragrant and free; early flowering. This is the hardy Marechal Niel; double yellow flowering.

**HIAWATHA (H. W.)**—Its flowers are about one and one-half inches across, and produced in long, pendulous sprays, with frequently from forty to fifty flowers on a spray. In color, it is brilliant ruby-carmine, with a clear white eye and a mass of golden stamens.

**JACOTTE (H. W.)**—Bud large, orange and yellow; flowers large, semi-double, open, cupped, very lasting; deep coppery yellow tinted coppery-red; borne, several together, on long, strong stem; fragrant. Blooms profusely in May and in June.

**MARIE GOUCHAULT (New)**—A pink form of the well known forcing variety Eugene Jacquet; dainty pure pink flowers in great abundance. A fine forcing climber.

**MARY LOVETT (H. W.)**—In this Dr. Van Fleet has brought out another Wichuraiana Hybrid, "White Dr. Van Fleet." This rose has done well and is strongly recommended. Loses foliage early.

**MARY WALLACE (H. W.)**—This is Dr. Van Fleet's masterpiece. Blooms two or three times during the summer months. A pillar rose supporting itself in a bushy growth 6 to 8 feet high. Bright clear rose-pink with salmon at base of petals. The largest Hybrid Wichuraiana in existence. Seen this year in all its giant loveliness.

**MME. GREGOIRE STAECHELIN (Spanish Beauty)**—This superb Rose is now being called the best pink climbing Rose yet introduced. The plant is extremely vigorous, growing twelve feet or more. Being a true climber, it may be used for fences, pergolas, and pillars. Unique in form, coloring and fragrance, its unusually large cup-like blooms are opalescent pink inside with the outside petals heavily brushed claret-carmine.

**PRIMROSE**—A new hardy yellow climber with large, double, canary-yellow flowers. Blooms very profusely.

**PAUL'S SCARLET CLIMBER (H. W.)**—Vivid scarlet, shaded crimson, makes a brilliant display for a long period of time in the garden. A wonderful climbing Rose. We consider it the most wonderful hardy climbing Rose.

**RED DOROTHY PERKINS, or EXCELSA (W.)**—Ornamental climber which is nearly evergreen; this will assure this lovely pillar Rose a place in every American garden, for it is quite hardy in addition to all its other fine points. The flowers are very double, produced in large trusses of thirty to forty and almost every eye on a shoot produces clusters of flowers. The color is deep rosy-red, the tips of the petals tinged with scarlet.

**ROSERIE (Pink Tausendschoen)**—This is a bright pink form of Tausendschoen. A grand Rose from any standpoint.

**SHOWER OF GOLD (H. W.)**—The color is a deep golden-yellow, with orange shadings in the center. This fills the "long felt want" for a "Yellow Rambler."

**SILVER MOON (H. W.)**—Flowers very large, four and one-half inches and over in diameter. Pure white in color; petals of great substance, beautifully cupped, forming a clematis-like flower. The large bunch of yellow stamens in the center adds to its attractiveness.

**VEILCHENBLAU, THE BLUE ROSE (H. W.)**—This is a much better Rose than some give it credit for. It opens a reddish-violet, quickly changing to violet-blue.

**WHITE DOROTHY PERKINS (W.)**—White Dorothy Perkins, in every way is the equal, if not superior, to Crimson Rambler, as a red, and Dorothy Perkins as a Pink. This Rose has no rival as a white climber.

## Hybrid Perpetual Hardy June Roses

FOR PRICES SEE PAGES 9 TO 10

**AMERICAN BEAUTY**—The well-known red forcing Rose.

**EUGENE FUERST**—Color deep red shaded crimson. Profuse bloomer. A most charming superb grand Rose.

**FRAU KARL DRUSCHKI, or WHITE AMERICAN BEAUTY, or SNOW QUEEN**—The very highest type of its class and the best snow-white Rose ever introduced. It is an extra ordinary strong grower, and has the vigor and hardiness of an oak. Flowers are immense in size and produced with great freedom. The color is a true paper white, the standard by which all white Roses are judged.

**GENERAL JACQUEMINOT**—Crimson-scarlet; large full, very fragrant. Excellent.

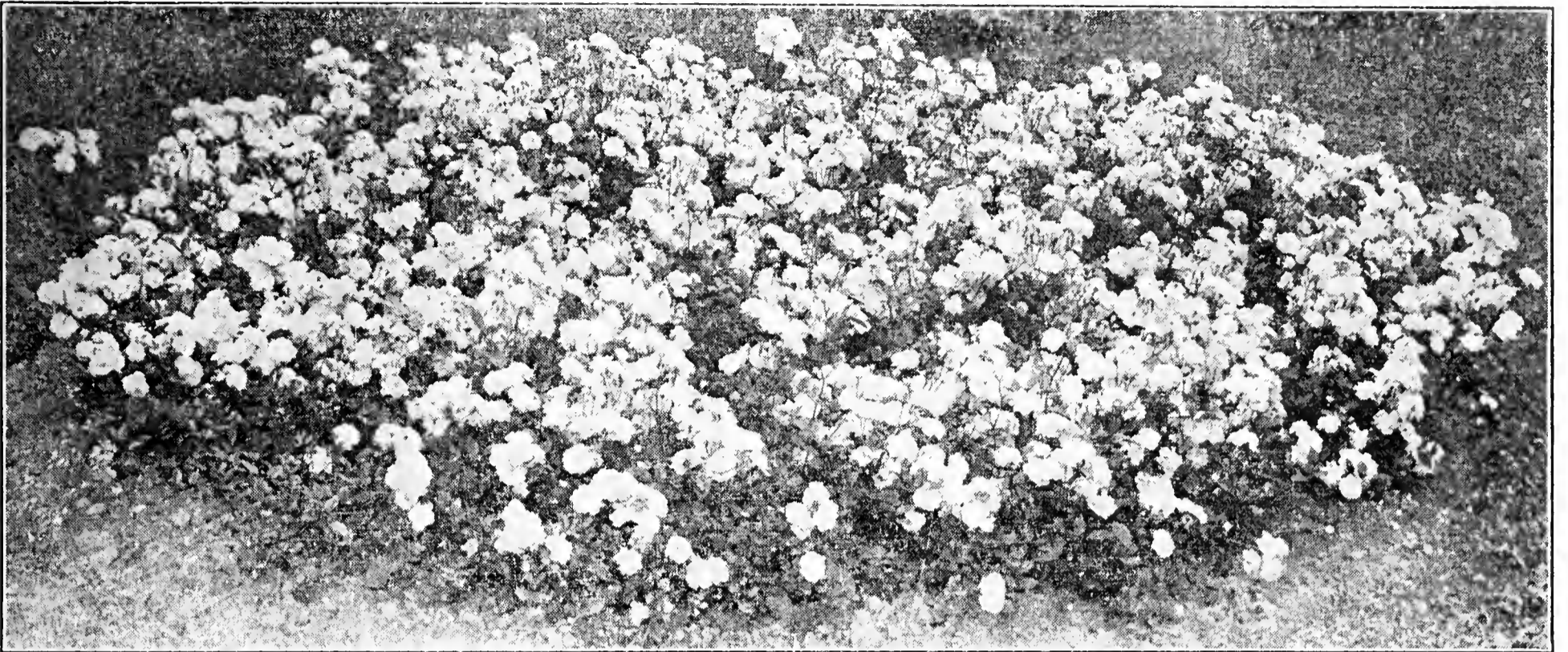
**GLOIRE LYONNAISE**—Very large, full flowers. Color white, base of petals canary; Tea Rose perfume.

**HIS MAJESTY**—The crimson Frau Karl Druschki. Deep dark crimson, shaded deep vermilion-crimson towards the edges.

**J. B. CLARK**—The color is unique among Roses, being deep scarlet shaded blackish-crimson, with rich bloom like a plum; flowers are large and beautifully formed.

**MAGNA CHARTA**—Bright rose, very large and double, good form and fragrant; extra.

**PAUL NEYRON**—Deep rose; flowers of immense size; indeed many claim this to be the largest Rose grown.



Polyantha Clothilde Soupert

## Polyantha or Baby Rambler Roses

FOR PRICES SEE PAGES 9 TO 10

(OWN ROOT STOCK)

**BABY RAMBLER, or MADAME N. LEVASSEUR**—This is the original Baby Rambler, daddy of them all. In bloom all the time. Flowers in large clusters of brightest red.

**BABY TAUSENDSCHOEN**—Its flowers are large and so much like "Tausendschoen." A blush form of "Climbing Tausendschoen," having all the charms in the variable colorings in its flowers that its parent has.

**CATHERINE ZEIMET or WHITE BABY RAMBLER**—Grows to a height of twenty inches and produces double pure white flowers in abundance.

**CHATILLON ROSE (Poly.)**—Bud small, long pointed; flower medium size, semi-double, cupped, very lasting bright pink. Very vigorous, bushy, one to two feet high, profuse and continuous bloomer. Hardy.

**CLOTHILDE SOUPERT (H. Poly.)**—Known the world over as one of the very best of all bedding Roses. The only rival of "Hermosa" as a bedder and market pot plant. The color effect is beautiful ivory-white, shading towards the center to bright silvery pink.

**ELLEN POULSON**—Dark brilliant pink, large, full, sweetly scented.

**ETOILE LUISANTE, or BABY HERRIOT**—Its color is a shrimp-pink with intense coppery-yellow suffusion, the base of the petals golden-yellow which intensifies and lightens up its high colors. Plant is of free growth and floriferous.

**GEORGE ELGER**—A lovely little golden-yellow Polyantha Rose, with good admixture of Tea blood; like all of its class, it is free in growth, free in bloom with small, glossy foliage.

**GLORIA MUNDI (Poly.)**—Neat full well formed flowers of the most brilliant scarlet orange color. A wonderful addition to list of forcing polyanthas. No other color like it. Bound to prove very popular.

**GRUSS AN AACHEN (H. Poly.)**—Yellowish-rose colored with salmon-pink and red shadings, full, strong, free blooming and disease proof; erect and of moderate growth.

**LA FAYETTE (Poly.)**—Brilliant cherry-crimson flowers, produced in branched trusses continuously from June until frost. The most brilliant and satisfactory Rose in this class for bordering walks or for edging large Rose beds.

**LE MARNE**—Dwarf, perpetual flowering Polyantha. Semi-double flowers, bright salmon-rose at the edges, rosy blush inside. Blooms abundantly and continuously in bouquets of fifteen to forty flowers. Has fine keeping qualities.

**MADMOISELLE CECILE BRUNNER (Poly.)**—This is the popular Baby pink or "Sweetheart" Rose. It makes a handsome miniature Rose, coming in sprays of three to five buds. Color blush, shaded light salmon-pink.

**MISS EDITH CAVELL**—Bright crimson, white eye; very beautiful.

**ORLEANS**—Showiest and prettiest of all Baby Ramblers. This charming and dainty Rose is of beautiful rounded habit and is a huge bouquet of deep cerise or Geranium-pink with distinct showy center of pure white; florets not crowded, but of beautiful arrangement, and cannot be beaten.

**SALMON SPRAY (Hy. Poly.)**—A very fine rose to force in pots for Easter, Mother's Day, etc. Color a beautiful salmon-pink.

**TIP TOP ("Baby Doll")**—The color is absolutely new, and quite startling in its brilliancy, golden-yellow tipped with clear, bright cerise.

## Climbing Polyanthas

**CLIMBING MADMOISELLE CECILE BRUNNER (C. H. P.)**—Rosy-pink on a rich creamy-white ground; a beauty. This is the strongest growing Rose offered in this catalog, barring none.

## MOSS ROSES

What can be more elegant than the bud of the Moss Rose and more delicious than its fragrance? Perfectly hardy.

**ELIZABETH ROWE**—This is an old favorite with its large deep pink buds well mossed. A beauty.

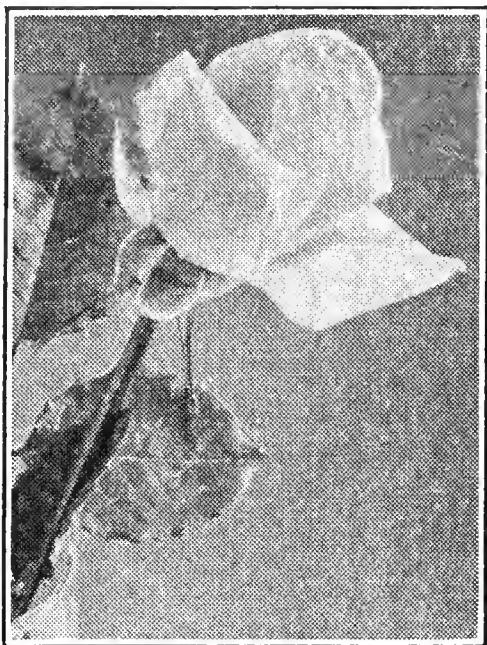
**HENRI MARTIN**—Large, full flower of deep red; well mossed; fragrant.

**MOUSSELINE**—Pure white flower, buds heavily and beautifully mossed.

## CHEROKEE OR LAEVIGATA

**AMOENA**—The Pink Flowering Cherokee Rose (L.)—The flowers are the same as the White Flowering Cherokee, except that the color is a glowing pink with a golden yellow center. Resembles huge apple blossoms.

**LAEVIGATA (The White Cherokee)**—This is the famous Cherokee Rose so well known in California. Large, pure white flowers with center filled with golden-yellow anthers.



Cl. Columbia



Cl. Maman Cochet



Cl. Gruss an Teplitz

## Everblooming Climbing Tea and Hybrid Tea Roses

FOR PRICES SEE PAGES 9 TO 10

- CLIMBING COLUMBIA** (Cl. H. T.) (New.)—The counterpart of Columbia except a vigorous climber. Bright pink.
- CLIMBING ETOILE DE FRANCE** (C. H. T.)—This Rose is identical in every respect with Etoile de France, save that it is a rampant climber, making it one of the very best dark, velvety crimson Climbing Roses.
- CLIMBING GRUSS AN TEPLITZ** (C. H. T.)—An exact counterpart of the bush form of that superb rose, Gruss an Teplitz, except that it is a vigorous climber. A perfect sheet of dazzling crimson when in bloom.
- CLIMBING HELEN GOULD** (Good & Reese) (C. H. T.)—Probably no red Rose has held its place secure in the hearts of Rose lovers for so long a period as has the beautiful Helen Gould. We have now the pleasure of introducing this famous Rose in climbing form; warm watermelon-red color.
- CLIMBING KAISERIN AUGUSTA VICTORIA** (C. H. T.)—A strong climbing form of the variety of the same name. Pure white.
- CLIMBING KILLARNEY** (C. H. T.)—An exact counterpart of Killarney in every respect except that it is of vigorous climbing habit; deep shell-pink.
- CLIMBING LADY ASHTOWN**—Almost hardy; produces large crop of large, soft rose-colored flowers; a beauty.
- CLIMBING LADY HILLINGDON** (C. T.)—A climbing sport of the popular variety of same name; a fine climber for walls or under glass. Makes exquisite buds of deep apricot yellow, shading to orange. Deliciously fragrant.
- CLIMBING MADAME CAROLINE TESTOUT** (C. H. T.)—A rampant climber. In flower identical with Mme. C. Testout. Beautiful glowing pink.
- CLIMBING MAMAN COCHET** (C. T.)—No Rose we grow is so popular as Maman Cochet. Here we have an exact counterpart of that popular variety, except that it is a vigorous climber.
- CLIMBING MARIE GUILLOT** (Good & Reese) (C. T.)—A grand pure white of great merit.
- CLIMBING METEOR** (C. H. T.)—A grand climber; color velvety maroon; very free bloomer.
- CLIMBING MRS. AARON WARD** (CL.H.T.)—Vigorous climber with coppery orange flowers.
- CLIMBING RADIANCE** (Cl. H. T.)—Vigorous climbing sport of the popular Radiance.
- CLIMBING RED RADIANCE** (Cl. H. T.)—Exactly like the bush variety of the same name except that it is of climbing habit.
- CLIMBING SOUVENIR OF WOOTTON** (C. H. T.)—Bearing deep crimson flowers of the largest size.
- CLIMBING WHITE MAMAN COCHET** (C. T.)—Here we have a climbing form that will become as popular a climber as its parent has as a bush Rose. Grand, huge white flowers tinged pink.
- MARECHAL NIEL** (N.)—This is the old standby yellow Rose in the South, where it is hardy; indeed it will bloom in any garden, but is not hardy in the North. Immense deep golden-yellow flowers with the deepest, richest tea fragrance of all Roses.
- REINE MARIE HENRIETTE** (C. T.)—Deep cherry-red. This Rose takes the lead as a climber from New Orleans to Philadelphia.

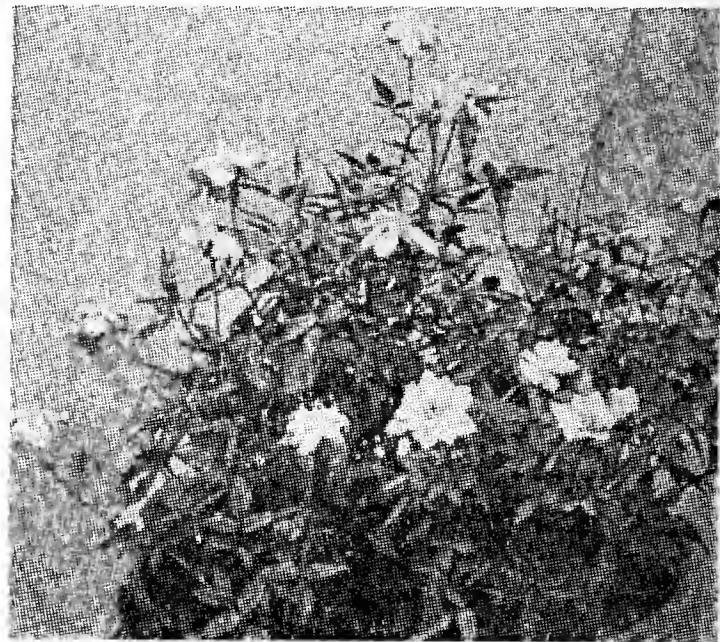
## BANKSIAS

**YELLOW BANKSIA**, or **LADY BANKS** (L. B.)—Same as White Banksia, except color of bloom is sulphur-yellow. Has the same delicious violet fragrance.

**WHITE BANKSIA**—A vigorous grower in the South. Small double, pure white flowers in clusters, with true violet fragrance.

## Miscellaneous Hardy Roses

**CONRAD FERDINAND MEYER** (H. Rug.)—Flowers large, double, cup-shaped. Color deep, bright, vivid intense pink, with the penetrating fragrance of the old June Roses.



Rosa Rouletti

## Rosa Rouletti The Miniature Rock Garden Rose

For many years this beautiful little rose was lost to cultivation. Several years ago a plant was found growing in an Alpine window-garden by M. Correvon, the famous Swiss Horticulturist. It is rapidly attaining popularity as a rock garden plant and as an edging subject. The plant grows about six to seven inches tall and blooms from early summer until heavy frost. The tiny rose-pink, quite double flowers are less than an inch in diameter. 2¼ inch pots, \$1.75 per 12; \$12.00 per 100. 4 inch pots, \$4.00 per 12; \$30.00 per 100.

## IMPORTANT

It will pay you well to place your rose order early for spring delivery. Advance orders are assured on first propagation. We are usually booked to the limit on most varieties at planting time.  
Avoid disappointment.

Ready Reference  
List of

Own Root Roses

Offered in  
Our Blue Book

SYMBOLS USED TO DESIGNATE CLASS OF ROSES

H. T.—Hybrid Tea.  
H. P.—Hybrid Perpetual.  
T.—Tea.  
H. Rug.—Hybrid Rugosa.

Per.—Pernetiana.  
Poly.—Polyantha  
Bour.—Bourbon.  
C.—China.

H. Cl.—Hardy Climber  
T. Cl. Tender Climber.  
Cl. H. T.—Climbing  
Hybrid Tea.

M.—Moss.  
Cl.T.—Climbing Tea.  
B.—Banksia.  
Cher.—Cherokee.

	2 1/4 Inch Pots			4 Inch Pots	
	Per 12	Per 100	Per 1,000	Per 12	Per 100
ALEX. HILL GRAY (T.)—Fine yellow. Good grower.....	\$0.85	\$5.50	\$50.00	\$2.00	\$15.00
ALIDA LOVETT (H. Cl.)—Shell pink .....	.85	5.50	50.00	2.00	15.00
AMERICAN BEAUTY (H. P.)—Red. Touches of crimson.....	1.50	10.00	95.00	2.75	20.00
AMERICAN PILLAR (H. C.)—Apple blossom pink.....	.85	5.50	50.00	.....	.....
AMOENA (Cher.)—Pink .....	1.00	6.50	60.00	2.00	15.00
ANTOINE RIVOIRE (H. T.)—Creamy white. Rainbow tint.....	.85	5.50	50.00	2.00	15.00
BABY DOLL (See Tip Top).....	.85	5.50	50.00	2.00	15.00
BABY HERRIOTT (See Etoile Luisante).....	1.10	7.50	70.00	2.00	15.00
BABY RAMBLER (Poly.)—Bright red .....	1.10	7.50	70.00	2.00	15.00
BABY TAUSENDSCHOEN (Poly.)—White, pink and rose in same cluster.....	1.10	7.50	70.00	2.00	15.00
BESSIE BROWN (H. T.)—Creamy white.....	1.00	6.50	60.00	2.00	15.00
BLUE RAMBLER (See Veilchenblau) .....	.85	5.50	50.00	2.00	15.00
BLUMENSCHMIDT (T.)—Lemon-yellow .....	.85	5.50	50.00	2.00	15.00
BRIARCLIFF (H. T.)—Light pink.....	1.20	8.50	80.00	2.00	15.00
BRIDESMAID (T.)—Deep pink .....	.85	5.50	50.00	2.00	15.00
CALEDONIA (H. T.)—Pure white .....	1.20	8.50	80.00	2.00	15.00
CATHERINE ZEIMET (Poly.)—White .....	1.00	6.50	60.00	2.00	15.00
CHAPLIN'S PINK CLIMBER—Hardy .....	1.10	7.50	70.00	2.00	15.00
CHARLES K. DOUGLAS (H. T.)—Flaming red.....	1.00	6.50	60.00	2.00	15.00
CHATILLON ROSE (Poly.)—Bright pink .....	1.00	6.50	60.00	2.00	15.00
CL. AMERICAN BEAUTY (H. Cl.)—Rosy red.....	.85	5.50	50.00	2.00	15.00
CL. COLUMBIA (Cl. H. T.)—Pink.....	1.10	7.50	70.00	2.00	15.00
CL. ETOILE DE FRANCE (Cl. H. T.)—Rich crimson.....	.85	5.50	50.00	2.00	15.00
CL. GRUSS AN TEPLITZ (Cl. H. T.)—Crimson scarlet.....	.85	5.50	50.00	2.00	15.00
CL. HELEN GOULD (Cl. H. T.)—Rosy red.....	.85	5.50	50.00	2.00	15.00
CL. KAISERIN AUGUSTA VICTORIA (Cl. H. T.)—White.....	1.00	6.50	60.00	2.00	15.00
CL. KILLARNEY (Cl. H. T.)—Pink .....	1.00	6.50	60.00	2.00	15.00
CL. LADY ASHTOWN (Cl. H. T.)—Deep pink.....	1.00	6.50	60.00	2.00	15.00
CL. LADY HILLINGDON (Cl. T.)—Deep golden yellow.....	1.00	6.50	60.00	2.00	15.00
CL. MAD. CAROLINE TESTOUT (Cl. H. T.)—Silvery pink.....	1.00	6.50	60.00	2.00	15.00
CL. MAMAN COCHET (Cl. T.)—Pink .....	.85	5.50	50.00	2.00	15.00
CL. MARIE GUILLOT (Cl. T.)—White .....	.85	5.50	50.00	2.00	15.00
CL. METEOR (Cl. H. T.)—Crimson .....	.85	5.50	50.00	2.00	15.00
CL. MLE. CECILE BRUNNER (Cl. Poly.)—Salmon pink.....	.85	5.50	50.00	2.00	15.00
CL. MRS. AARON WARD (CL.H.T.)—Yellow .....	1.20	8.50	80.00	2.00	15.00
CL. RADIANCE (CL.H.T.)—Pink .....	1.20	8.50	80.00	2.00	15.00
CL. RED RADIANCE (Cl. H. T.)—Rich red.....	1.10	7.50	70.00	2.00	15.00
CL. SOUV. WOOTTON (Cl. H. T.)—Clear red.....	.85	5.50	50.00	2.00	15.00
CL. WHITE AMERICAN BEAUTY (H. Cl.)—Snow white.....	.85	5.50	50.00	2.00	15.00
CL. WHITE MAMAN COCHET (Cl. T.)—White.....	.85	5.50	50.00	2.00	15.00
CLOTHILDE SOUPERT (Hy. Pol.)—White, pink center.....	.85	5.50	50.00	2.00	15.00
COLUMBIA (H.T.)—Pink .....	1.20	8.50	80.00	2.00	15.00
CONRAD F. MEYER (Hy. Rug.)—Flesh pink .....	1.00	6.50	60.00	2.00	15.00
CRIMSON QUEEN (H. T.)—Deep crimson .....	1.00	6.50	60.00	2.00	15.00
CRIMSON RAMBLER (Hy. Cl.)—Crimson .....	.85	5.50	50.00	2.00	15.00
CRUSADER (H. T.)—Velvety crimson .....	1.20	8.50	80.00	2.00	15.00
DAME EDITH HELEN (H. T.)—Brilliant soft pink.....	1.20	8.50	80.00	2.00	15.00
DOROTHY PERKINS (H. Cl.)—Silver pink.....	.85	5.50	50.00	.....	.....
DR. HUEY (H. Cl.)—Dark crimson, black shadings.....	.85	5.50	50.00	2.00	15.00
DR. VAN W. FLEET (H. Cl.)—Flesh pink.....	.85	5.50	50.00	2.00	15.00
DUCHESS DE BRABANT (T.)—Salmon pink. (Duchess of the South).....	1.00	6.50	60.00	2.00	15.00
DUCHESS OF WELLINGTON (H. T.)—Saffron yellow.....	1.50	10.00	95.00	2.00	15.00
E. G. HILL (H. T.)—Red .....	1.50	10.00	95.00	2.00	15.00
EDITH CAVELL (See Miss Edith Cavell).....	1.00	6.50	60.00	2.00	15.00
ELIZABETH ROWE (M.)—Red.....	1.00	6.50	60.00	2.00	15.00
ELLEN POULSON (Poly.)—Dark pink .....	1.00	6.50	60.00	2.00	15.00
ETOILE DE FRANCE (H. T.)—Crimson .....	1.00	6.50	60.00	2.00	15.00
ETOILE DE HOLLAND (H. T.)—Dark red.....	1.20	8.50	80.00	2.00	15.00
ETOILE DE LYON (T.)—Yellow .....	.85	5.50	50.00	2.00	15.00
ETOILE LUISANTE (Baby Herriott) (Poly.)—Shrimp pink.....	1.10	7.50	70.00	2.00	15.00
EUGENE FUERST (H. P.)—Deep crimson.....	1.10	7.50	70.00	2.00	15.00
EUGENE JACQUET (H. Cl.)—Cherry red.....	.85	5.50	50.00	2.00	15.00
EXCELSA (H. Cl.)—Red Dorothy Perkins.....	.85	5.50	50.00	2.00	15.00
FRANCIS SCOTT KEY (H. T.)—Deep red.....	1.10	7.50	70.00	2.00	15.00
FRAU KARL DRUSCHKI (H. P.)—White, buds tinged pink.....	1.10	7.50	70.00	2.00	15.00
GARDENIA (H. Cl.)—Light yellow .....	.85	5.50	50.00	2.00	15.00
GEN. JACQUEMINOT (H. P.)—Shining crimson.....	1.00	6.50	60.00	2.00	15.00
GEO. ELGER (Poly.)—Yellow .....	1.00	6.50	60.00	2.00	15.00
GLORIA MUNDI (New) (Poly.)—Scarlet orange.....	1.20	8.50	80.00	2.00	15.00
GLOIRE LYONNAISE (H. P.)—Pale chamois yellow.....	1.10	7.50	70.00	2.00	15.00
GOLDEN OPHELIA (H. T.)—Golden yellow.....	1.10	7.50	70.00	2.00	15.00
GRUSS AN AACHEN (Hy. Poly.)—Yellowish pink. Salmon shadings.....	1.00	6.50	60.00	2.00	15.00
GRUSS AN TEPLITZ (H. T.)—Bright red.....	.85	5.50	50.00	2.00	15.00
HELEN GOULD (H. T.)—Red.....	.85	5.50	50.00	2.00	15.00
HENRI MARTIN (M.)—Red .....	1.00	6.50	60.00	2.00	15.00
HERMOSA (C.)—Pink .....	.85	5.50	50.00	2.00	15.00

No plant orders filled at these prices for less than 6 of a variety, except as noted. Less than 25 filled at dozen rates; 25 to 200 of a variety at hundred rates. Over 200 of a variety at thousand rates, when thousand rates are quoted.

Ready Reference  
List of

## Own Root Roses

Offered in  
Our Blue Book

	2 1/4 Inch Pots			4 Inch Pots	
	Per 12	Per 100	Per 1,000	Per 12	Per 100
HIAWATHA (H. Cl.)—Scarlet .....	\$0.85	\$5.50	\$50.00	\$2.00	\$15.00
HIS MAJESTY (H. P.)—Rich red .....	1.10	7.50	70.00	2.00	15.00
J. B. CLARK (H. P.)—Red .....	1.20	8.50	80.00	2.00	15.00
JACOTTE (H. C.)—Orange yellow tipped red .....	1.00	6.50	60.00	2.00	15.00
JOANNA HILL (H. T.)—Golden yellow .....	1.20	8.50	80.00	2.00	15.00
JONKHEER J. L. MOCK (H. T.)—Clear pink, reverse china pink .....	1.00	6.50	60.00	2.00	15.00
KAISERIN AUG. VICTORIA (H. T.)—Best white .....	1.00	6.50	60.00	2.00	15.00
KILLARNEY (H. T.)—Deep sea shell pink .....	1.00	6.50	60.00	2.00	15.00
KITCHENER OF KHARTUM (H. T.)—Solid scarlet .....	1.00	6.50	60.00	2.00	15.00
LA CHAMPAGNE (H. T.)—Chamois, shading to yellow .....	1.10	7.50	70.00	2.00	15.00
LADY HILLINGDON (T.)—Deep golden yellow .....	1.00	6.50	60.00	2.00	15.00
LADY URSULA (H. T.)—Flesh pink .....	.85	5.50	50.00	2.00	15.00
LAEVIGATA (L.)—The white Cherokee .....	.85	5.50	50.00	2.00	15.00
LA FAYETTE (Poly.)—Cherry red .....	1.00	6.50	60.00	2.00	15.00
LA FRANCE (H. T.)—Pink .....	1.10	7.50	70.00	2.00	15.00
LAURENT CARLE (H. T.)—Velvety crimson .....	1.00	6.50	60.00	2.00	15.00
LE MARNE (Poly.)—Salmon-rose, white center .....	.85	5.50	50.00	2.00	15.00
LOUIS PHILLIPE (C.)—Bright red. A favorite South .....	1.00	6.50	60.00	2.00	15.00
MAD. BUTTERFLY (H. T.)—Pink, shaded apricot and gold .....	1.20	8.50	80.00	2.00	15.00
MAD. CAROLINE TESTOUT (H. T.)—Silvery pink .....	1.00	6.50	60.00	2.00	15.00
MAD. GREGOIRE STAEHELIN (H. Cl.)—Pink .....	1.10	7.50	70.00	2.00	15.00
MADISON (T.)—White .....	1.00	6.50	60.00	2.00	15.00
MAGNA CHARTA (H. P.)—Pink .....	1.10	7.50	70.00	2.00	15.00
MAMAN COCHET (T.)—Pink .....	.85	5.50	50.00	2.00	15.00
MARECHAL NIEL (Cl. T.)—Yellow .....	1.00	6.50	60.00	2.00	15.00
MARIE GOUCHAULT (H. Cl.)—Pink .....	.85	5.50	50.00	2.00	15.00
MARIE VAN HOUTTE (T.)—Creamy yellow, edged pink .....	.85	5.50	50.00	2.00	15.00
MARY LOVETT (H. Cl.)—White .....	.85	5.50	50.00	2.00	15.00
MARY WALLACE (H. Cl.)—Rosy pink .....	.85	5.50	50.00	2.00	15.00
METEOR (H. T.)—Dark crimson .....	.85	5.50	50.00	2.00	15.00
MISS EDITH CAVELL (Poly.)—Bright red .....	1.00	6.50	60.00	2.00	15.00
MLLE. CECILE BRUNNER (Poly.)—(Mignon and Sweetheart)—Salmon pink .....	1.00	6.50	60.00	2.00	15.00
MLLE. FRANZISCA KRUGER (T.)—Deep salmon-yellow .....	.85	5.50	50.00	2.00	15.00
MLLE. HELENE CAMBIER (H. T.)—Pale yellow-copper center .....	.85	5.50	50.00	2.00	15.00
MOUSSELINE (M.)—White, flushed pink .....	1.00	6.50	60.00	2.00	15.00
MRS. AARON WARD (H. T.)—Golden orange .....	1.10	7.50	70.00	2.00	15.00
MRS. BEN R. CANT (T.)—Deep rose .....	.85	5.50	50.00	2.00	15.00
MRS. CHAS. BELL (H. T.)—Salmon pink .....	1.00	6.50	60.00	2.00	15.00
OPHELIA (H. T.)—Salmon flesh shaded rose .....	1.10	7.50	70.00	2.00	15.00
ORLEANS (Poly.)—Rosy-red .....	1.00	6.50	60.00	2.00	15.00
PAUL NEYRON (H. P.)—Deep rose .....	1.00	6.50	60.00	2.00	15.00
PAUL'S SCARLET CLIMBER (H. Cl.)—Intense scarlet .....	.85	5.50	50.00	2.00	15.00
PINK TAUSENDSCHOEN—See Roserie .....	.85	5.50	50.00	2.00	15.00
PRESIDENT HOOVER (H. T.)—Orange and pink .....	1.20	8.50	80.00	2.00	15.00
PRES. TAFT (H. T.)—Pink-golden at base of petals .....	.85	5.50	50.00	2.00	15.00
PRIMROSE (H. C.)—Canary-yellow .....	1.00	6.50	60.00	2.00	15.00
RADIANCE (H. T.)—Beautiful pink .....	1.00	6.50	60.00	2.00	15.00
RAPTURE (H. T.)—Apricot, coral, gold .....	1.20	8.50	80.00	2.00	15.00
RED COLUMBIA (H. T.)—Rich red .....	1.00	6.50	60.00	2.00	15.00
RED LETTER DAY (H. T.)—Intense scarlet .....	.85	5.50	50.00	2.00	15.00
RED RADIANCE (H. T.)—Rich red .....	1.00	6.50	60.00	2.00	15.00
REINE MARIE HENRIETTE (Cl. T.)—Cherry red .....	.85	5.50	50.00	2.00	15.00
REV. F. PAGE ROBERTS (H. T.)—Orange yellow, lighter edges .....	1.10	7.50	70.00	2.00	15.00
RHEA REID (H. T.)—Rich dark red .....	1.00	6.50	60.00	2.00	15.00
ROSA ROULETTI—Pink .....	1.75	12.50	100.00	4.00	30.00
ROSERIE (H. Cl.)—Glowing pink .....	.85	5.50	50.00	2.00	15.00
SALMON SPRAY (Hy. Poly.)—Salmon pink .....	1.00	6.50	60.00	2.00	15.00
SHOWER OF GOLD (H. Cl.)—Deep yellow .....	.85	5.50	50.00	2.00	15.00
SILVER MOON (H. Cl.)—Pure white, yellow disc .....	.85	5.50	50.00	2.00	15.00
SNOWFLAKE (T.)—White .....	.85	5.50	50.00	2.00	15.00
SOUV. DE PIERRE NOTTING (T.)—Soft yellow, bordered carmine .....	.85	5.50	50.00	2.00	15.00
SOUV. LA MALMAISON (Bour.)—Flesh pink, very double .....	.85	5.50	50.00	2.00	15.00
SUNBURST (H. T.)—Cadmium-yellow .....	1.10	7.50	70.00	2.00	15.00
TALISMAN (H. T.)—Yellow and pink shades .....	1.20	8.50	80.00	2.00	15.00
TEMPLAR (H. T.)—Clear bright red .....	1.20	8.50	80.00	2.00	15.00
THE BRIDE (T.)—White .....	1.00	6.50	60.00	2.00	15.00
THE QUEEN (T.)—Snowy white .....	.85	5.50	50.00	2.00	15.00
TIP TOP (Baby Doll)—(Poly.)—Golden yellow, edged cerise .....	.85	5.50	50.00	2.00	15.00
VEILCHENBLAU (H. Cl.)—Blue rambler .....	.85	5.50	50.00	2.00	15.00
WHITE BANKSIA (L. B.)—White .....	1.00	6.50	60.00	2.00	15.00
WHITE BOUGERE (T.)—White .....	.85	5.50	50.00	2.00	15.00
WHITE KILLARNEY (H. T.)—Pure snow white .....	1.10	7.50	70.00	2.00	15.00
WHITE DOROTHY PERKINS (H. Cl.)—White .....	.85	5.50	50.00	.....	.....
WHITE LA FRANCE (H. T.)—White, tinted pink .....	1.00	6.50	60.00	2.00	15.00
WHITE MAMAN COCHET (T.)—White, tipped pink .....	.85	5.50	50.00	2.00	15.00
WILLIAM R. SMITH (T.)—Delicate dove pink .....	.85	5.50	50.00	2.00	15.00
YELLOW BANKSIA (Lady Banks) (B.)—Yellow .....	1.00	6.50	60.00	2.00	15.00

No plant orders filled at these prices for less than 6 of a variety, except as noted. Less than 25 filled at dozen rates; 25 to 200 of a variety at hundred rates. Over 200 of a variety at thousand rates are quoted.

# Good & Reese Plants and Bulbs

## For Greenhouse and Nursery Planting

All Plants from 2 1/4 Inch Pots, Unless Otherwise Stated

### ASPARAGUS

A dependable supply.

Plumosus Nanus—	Per-12	Per 100	Per 1000
2 1/4 inch pots.....	\$0.80	\$5.50	\$50.00
Sprengeri—	Per 12	Per 100	Per 1000
2 1/4 inch pots.....	\$0.80	\$5.50	\$50.00

### ABUTILON (Flowering Maple)

A choice summer bedding plant. Ornamental leaves with bell shaped flowers. Colors—Red, White, and Pink.

Doz.	100
\$1.10	\$7.50

### ACALYPHA

SANDERII (Chenille or Comet Plant)—A colorful foliage plant of strong, free growth, with large dark green leaves from the axil of which rope-like spikes from one to two feet long, and nearly one inch thick, are gracefully suspended.

Doz.	100	1000
\$1.00	\$7.00	\$65.00

TRIUMPHANS—The handsome bronzy red foliage plant; in open ground it fairly glistens.

Doz.	100	1000
\$1.00	\$7.00	\$65.00

### ACHYRANTHUS

HERBSTII—Red foliage. SIEBOLDI—Green foliage.

Doz.	100
\$0.70	\$5.00

### AGERATUM FRASERI

Of compact growth, fine for bedding, basket and vase work.

Doz.	100	1000
\$0.70	\$5.00	\$45.00

### ALOYSIA CITRIODORA (Lemon Verbena)

A sweet lemon-scented garden plant, extensively used to impart a sweet scent to bunches of flowers lacking a scent of their own.

Doz.	100	1000
\$0.70	\$5.00	\$45.00

### ALTERNANTHERA

	Doz.	100	1000
2 1/4 inch pots.....	\$0.55	\$4.00	\$35.00

AUREA NANA—Yellow and Green.

BRILLIANTISSIMA IMPROVED—Deep Red.

PARONYCHIOIDES—Light red.

### AMELOPSIS VEITCHII (The Boston Ivy)

Clings firmly to any wall, building or tree. Green leaves in summer, changing to red in the fall.

	Doz.	100	1000
2 1/4 inch pots.....	\$0.90	\$6.50	\$60.00

### ANTIGNON LEPTOPUS

A climbing vine of merit. Brilliant pink flowers, especially valuable for Southern and Pacific States.

Doz.	100	1000
\$0.75	\$5.50	\$50.00

### ANTHERICUM VITATA VARIEGATUM

A most beautiful foliage plant that is very desirable for vase, box or basket work. Foliage is green and white; very showy.

	Doz.	100
2 1/4 inch pots.....	\$1.00	\$7.00

### ARTEMISIA "SILVER KING"

Very Fine Dried for Winter Bouquets and Sprays

An attractive and useful perennial where color effect is wanted. Our stock came from the garden of an old plantation in the South. White leaves

which have a pleasant fragrance.

	Doz.	100	1000
2 1/4 inch pots.....	\$1.10	\$7.50	\$70.00

### BEGONIA JEWEL EVANSIANA

This is a tuberous-rooted, herbaceous, hardy perennial Begonia, losing its tops in the fall. When bedded out, the roots remain in the soil and start new growth in the spring, just as do the Peony and Perennial Phlox. The plants like a rich, porous soil and partial shade and will bloom throughout the summer.

Per Doz., \$0.85 Per 100, \$6.00

### FLOWERING BEGONIAS

Price, two and one-quarter inch pots, except where noted, \$1.00 per doz., \$7.50 per 100, \$70.00 per 1000.

ALBA PERFECTA GRANDIFLORA—A pure white-flowering Begonia.

ALBA PICTA—Long, pointed, slender leaves thickly spotted with silvery-white. Foliage small and elegant.

ARGENTEA GUTTATA — It has purple-bronze leaves, oblong in shape, with silvery marking, and a most beautiful Begonia.

CHATELAINE SUPREME (New Flowering Begonia)—Freest blooming variety known, and literally covered the entire year with a wealth of beautiful pink flowers with yellow stamens.

CORALLINE LUCERNE—A strong, vigorous grower of upright habit. The flowers are borne in great clusters from 12 to 18 inches across, almost hiding the plant. The color is a beautiful bright coral-red of a heavy waxen texture.

Per Doz., \$1.20 Per 100, \$8.00

CRESTED FEASTII—The crested form of the popular Beefsteak Begonia. Very showy.

Per Doz., \$1.35 Per 100, \$10.00

FEASTII, or BEEFSTEAK BEGONIA—A low, spreading Begonia, with perfectly circular leaves, red beneath and dark, glossy-green above, and of heavy texture.

Per Doz., \$1.35 Per 100, \$10.00

MARGUERITE—Bronzy green leaves, red beneath, with large trusses of rose colored flowers.

MRS. TOWNSEND—Broad foliage; profusion of pink flowers. Seven point leaves.

Per Doz., \$1.35 Per 100, \$10.00

PICTA ROSEA—Rare and scarce variety. Beautiful light green foliage with rose pink flowers.

RED CHATELAINE SUPREME—Gorgeous pot variety for winter. Never out of bloom.

THURSTONII—Bright red foliage and veining underneath the leaves, and bright metallic-green shading to red in the younger growth on top. The flowers are a beautiful deep pink in bud, but when expanded become a beautiful shell pink.

REX BEGONIA—Good assortment. 2 1/4 inch pots.

Per Doz., \$1.35 Per 100, \$10.00

### BELOPERONE GUTTATA

CORSICAN SHRIMP PLANT—A heavy-wooded branching pot-plant up to 2 or more feet, with dark green leaves; almost continuously displaying its uniquely beautiful flowers. These are 2-lipped tubes, white with purple spots, surrounded by 3/4-inch, heart-shaped bracts which lie flat and overlapping like scales, along four sides of a 3 to 5-inch drooping spike. These are very showy, salmon-red and old-rose, with brightly contrasting extremity of primrose yellow.

Doz.	100	1000
\$0.90	\$6.50	\$60.00

# Plants and Bulbs for Greenhouse and Nursery Planting (Continued)

**BIGNONIA VENUSTA (Flame Vine)**

Without a doubt this vine attracts more attention in Florida than any other, even than the Bougainvilleas. In many sections of South Florida it covers huge pine trees, fences, buildings, and the like, and when in bloom in winter appears to be a mass of flames. The vine is exceptionally vigorous, reaching 80 feet or more, and clinging tightly to any support unaided after securing a little foot hold. The foliage is a good green and the orange-red, tubular flowers are borne in dense clusters and greatest profusion in winter and often times are followed by a lighter crop in May or June.

Per Doz., \$2.00                      Per 100, \$15.00

**BOUGAINVILLEA**

	Doz.	100	1000
SANDERIANA—2¼ inch pots	\$1.10	\$7.50	\$70.00
CRIMSON LAKE—2¼ inch pots	1.50	10.00	

**BROWALLIA (Gigantea)**

Flowers intense blue. A spray of this flower resembles a bunch of Giant Violets. A much used florist's pot plant, and always in bloom.

	Doz.	100	1000
2¼ inch pots	\$0.80	\$5.50	\$50.00

**BRUGMANSIA (Angel's Trumpet)**

Much used as a tub or pot plant for indoor winter flowering and ornament. Of easy growth, blooming freely, bearing fragrant pure white flowers which often attain a length of eight inches and ten inches wide at the mouth. The plant has large, tropical leaves.

Doz., \$1.20                                      100, \$8.00

**BUDDLEIA (Butterfly Shrub)**

**ASIATICA**—The popular white winter forcing variety for florists.

	Doz.	100	1000
2¼ inch pots	\$0.90	\$6.50	\$60.00

**CALADIUM (Fancy Leaved)**

Strictly first sized bulbs. Attractive assortment.

Doz., \$2.25                                      100, \$15.00

**ORNAMENTAL BOX (Buxus Sempervirens)**

We have a splendid stock in 2¼ inch pots, ready for lining out, at \$7.00 per 100, \$65.00 per 1,000. Strong, 8 to 10 inches, bushy plants, \$2.50 per dozen, \$20.00 per 100.

**CALLA LILY, "Devoniensis"**

Undoubtedly the finest thing ever sent out in the Calla line, and quite indispensable. Blooms all winter. Compared with the ordinary Calla, it gives three blooms to one; is snow-white and perfect in form. Blooms on very small plants, though it attains to a very large size with very large flowers.

	Doz.	100	1000
2½ inch pots	\$0.90	\$6.50	\$60.00

**CLEMATIS PANICULATA (Japanese Virgin's Bower)**

One of the most beautiful of our hardy flowering vines. The flowers are pure white, and are borne in large panicles or clusters of bloom, fairly covering the plant, so that it is a mass or sheet of fleecy white. 2¼ inch pots, 75c per dozen; \$5.00 per 100.

**COLEUS**

Price, 2¼ inch pots, 55c per dozen; \$4.00 per 100; \$35.00 per 1000.

Rooted Cuttings, \$1.50 per 100; \$12.50 per 1000.

Our stock of Coleus is bigger than ever, and we think we can meet the wants of our customers. The varieties range in color from light yellow to the darkest crimson, including the following standard market sorts:

**ACME**—Bronze, red center, edged green.

**COLEUS—(Continued)**

**ADMIRATION**—Deep claret red, edged green and yellow.

**BEAUTY**—Rose center bordered with dark red.

**BECKWITH GEM**—Dark velvety-maroon, bordered fiery-red, edged green.

**COUNT CUVIER**—Center fiery-red, surrounded with maroon, edged olive-green, serrated edge.

**DUNERIA**—Color crimson, maroon center; beautifully scalloped edge of light red.

**EMPRESS OF INDIA**—Bronze-red, golden yellow edge.

**FIREBRAND**—Brilliant dark-red; extra.

**FIRECREST**—Carmine crimson, bordered scarlet.

**GOLD BOUND**—Dark maroon with blotches of a darker shading; yellow border.

**HERO**—Very dark, almost jet black.

**JOSEPH'S COAT**—An intermingling of many colors.

**LEOPARD**—Green background, minute rosy spots.

**MAY LEVERING**—Spotted and striped with maroon, green, red and yellow.

**QUEEN OF THE WEST**—Creamy-white and oxide-green, margin bright yellow.

**RED CLOUD**—Dark red or royal hue.

**SENSATION**—Crimson-maroon, center bright red.

**SETTING SUN**—Velvety-red, bordered yellow.

**SPOTTED GEM**—Spotted yellow, green and red.

**VERSCHAFFELTI**—A rich velvety crimson.

**YELLOW BIRD**—Clear bright yellow.

**COLEUS TRAILING BEAUTY**—The same as Trailing Queen in every respect except the color, this being green, yellow and white.

**COLEUS TRAILING QUEEN**—The finest of all plants for boxes, baskets or vases; it droops and hangs down two feet or more, not one little vine, but a whole clump of them. The center of foliage is scarlet, then around that a chocolate border, and outer edge of leaf margined green.

**COLEUS CHRISTMAS GEM**

We have a very large supply of this profitable florist's plant. Color carmine shading off to a deep maroon, margin yellow and green.

	Per 100	Per 1000
Rooted Cuttings	\$3.00	\$25.00
2¼ inch pots	5.00	45.00

**NEW COLEUS C. W. SCHMIDT**

We predict this new Coleus will be more popular than Christmas Gem when it becomes better known. It is an improved Setting Sun with center of velvety crimson edged and spotted gold. It is especially fine when grown in 4 and 5 inch pots.

	Per 100	Per 1000
Rooted Cuttings	\$3.00	\$25.00
2¼ inch pots	5.00	45.00

**BUSH DUSTY MILLER**

(Senecio Argenteus)—Silvery foliage. Fine for bedding, vases, hanging baskets and pots; also extensively used for margin.

	Doz.	100
2¼ inch pots	\$0.70	\$5.00

**MARGUERITE DAISIES**

Price, 85 Cents Per Dozen; \$6.00 Per Hundred.  
**PARIS MARKET**—Semi-double, white anemone center of pale yellow.

**IMPROVED YELLOW**—(Boston Yellow)—Pale yellow flower and disc.



# Plants and Bulbs for Greenhouse and Nursery Planting (Continued)

## CREPE MYRTLE

A real southern plant, not hardy north of Baltimore, but should be in every yard in the South. Our friends go wild over this magnificent plant with its profusion of bloom and lustrous green foliage, turning red in the fall. It will attract attention in any landscape. Dwarf blue, Purple, Imperial Pink, Lilac Rubra, Magenta, Light Pink.

	Doz.	100	
2 1/4 inch pots.....	\$1.00		\$7.00

## CYPERUS ALTERNIFOLIUS Umbrella Plant

	Doz.	100	
2 1/4 inch pots.....	\$0.70		\$5.00

## CUPHEA PLATYCENTRA Or Cigar Plant

Fine for baskets and vases.

	Doz.	100	
2 1/4 inch pots.....	\$0.55		\$4.00

## GNAPHALIUM LANATUM (Trailing Dusty Miller)

Snow-white foliage, splendid trailing plant for baskets and boxes.

	Doz.	100	1000
2 1/4 inch pots.....	\$0.70	\$5.00	\$45.00

## EUPHORBIA SPLENDENS

**CROWN OF THORNS**—A curious plant with thick, fleshy stems which are covered with stout, sharp thorns, many an inch long. The foliage is bright green and the flowers are a beautiful coral-pink. Very pretty when in bloom and a great curiosity at any time.

	Doz.	100	
2 1/4 inch pots.....	\$1.50		\$10.00

## DRACAENA INDIVISA

The popular ornamental plant.

	Doz.	100	1000
2 1/4 inch pots.....	\$0.70	\$5.00	\$45.00
4 inch pots.....	3.25	25.00	

## ECHEVERIA SECUNDA GLAUCA

An old time favorite that is rapidly becoming popular again. Very useful both as a pot plant and for bedding.

	Doz.	100	
2 1/4 inch pots.....	\$1.20		\$8.00

## EUONYMUS RADICANS COLORATA

Decidedly creeping ever-green plant introduced by Dept. of Agriculture from China lately. Very green leaves all summer, turning copper red in autumn. Creeps and roots as it goes. Finest ground cover for banks, under trees, on big rockeries. Something new and good.

	Doz.	100	1000
2 1/4 inch pots.....	\$1.50	\$10.00	\$90.00

## EPHYPHYLLUM (Christmas Cactus)

**TRUNCATUM**—The increasingly popular Christmas plant flowering in December and January.

	Doz.	100	
2 1/4 inch pots.....	\$1.20		\$8.00

## ERLANGEA TOMENTOSA

A wonderfully free-blooming plant: fine for funeral work when blue is scarce; blooms all winter; Heliotrope-like flowers, easy to grow; for the grower who has limited room, a small space on bench will produce flowers all winter long; excellent for use with pink Roses. 2 1/4 inch. Price, 75 cents per dozen; \$5.00 per hundred.

## FARFUGIUM (Leopard Plant)

Fine stock. Price, 3 inch, \$3.50 per dozen; \$25.00 per hundred.

## GREVILLEA ROBUSTA (Silk Oak)

Another grand plant for center piece for your vase. Sunshine enriches its color—foliage as pretty as an ostrich plume fern.

	Doz.	100	1000
2 1/4 inch pots.....	\$0.75	\$5.00	\$45.00

## GOOD AND REESE, DWARF FLOWERING FLORISTS' FUCHSIAS

We are large growers of Fuchsias and we call special attention to the varieties listed below—they are dwarf branching and free flowering. Good 2 1/4 inch Fuchsias now will make splendid 6 and 7 inch specimen plants for Easter.

**BLACK PRINCE**—The finest single variety. It makes a shapely bush, is robust in growth, free from disease and insects, and is probably the freest in blooming. Blossoms of a beautiful waxy-carmine or pink color.

**IRWIN'S GIANT PINK**—The best Fuchsia yet introduced. Enormous flowers of beautiful salmon-pink.

**LITTLE BEAUTY** — Red sepals, double purple corolla. Dwarf. Very free flowering.

**LORD BYRON**—Red sepals, corolla of the richest royal purple.

**MADAM VAN DER STRASS**—This is the best of the double white-corolla Fuchsias.

**SPECIOSA**—Well known variety, producing large flowers two inches in length, tubes and sepals of which are blush, the corolla crimson. Some plants of this variety grown in eight or nine-inch pots will produce from 300 to 500 flowers from December to May.

	Doz.	100	1000
2 1/4 inch pots.....	\$0.75	\$5.00	\$45.00

## HELIOTROPE

**FLORENCE NIGHTINGALE**—A splendid lavender shade. "The variety grown in our grandmothers' gardens."

	Doz.	100	1000
2 1/4 inch pots.....	\$0.75	\$5.00	\$45.00

**CENTEFLOR**—Dwarf growing with fine, neat foliage, florets wide and flat, deep true heliotrope, with conspicuous white eye. Sprays are of the largest size.

	Doz.	100	
2 1/4 inch pots.....	\$0.85		\$6.00

**ROYAL FRAGRANS**—Extremely dark violet purple in extra large florets compactly set in heavy cymes.

	Doz.	100	
2 1/4 inch pots.....	\$0.85		\$6.00

## HEXIA—BABY TEARS OR IRISH MOSS

Compact, dense growing plant with miniature leaves; forms a rounded mass of moss-like foliage. A wonderful pot plant. \$1.20 per 12; \$8.00 per 100.

## CHINESE HIBISCUS

	Doz.	100	1000
2 1/4 inch pots.....	\$1.00	\$7.00	\$65.00
4 inch pots.....	3.00	20.00	

**DOUBLE CRIMSON**—Flower of the richest crimson, combined with glossy foliage.

**GRANDIFLORUS**—Rich, glossy, cut-leaved foliage, literally covering the plant with scarlet-crimson flowers.

**PEACHBLOW**—A sport from the Double Red Hibiscus *Rosa Sinensis*. Flowers double and from four to five inches in diameter, of a charming rich, clear pink color, with small, deep crimson center. It is one of the freest flowering plant novelties recently offered. The color is an entirely new and beautiful shade and it blooms abundantly and continuously during the summer and fall months. Large plants two and three years old make a magnificent show. It will give general satisfaction to those who grow it, either in pots or planted out in the garden. It blooms well in winter in greenhouses or in any sunny window.

**SUB-VIOLACEOUS**—Flowers of enormous size, beautiful carmine, tinted violet. Probably the largest flower of the Hibiscus family, and an unusually free bloomer.

# Plants and Bulbs for Greenhouse and Nursery Planting (Continued)

## HONEYSUCKLES

Price, 75 cents per dozen; \$5.50 per hundred; \$50.00 per thousand.

**HALL'S JAPAN**—The most constant bloomer of the class, being literally covered all summer with beautiful yellow and white flowers.

**SCARLET TRUMPET, or RED CORAL**—The old favorite.

## IMPATIENS

**PINK BEAUTY**—Salmon-pink flowers; purple eye. Very attractive.

**SULTANI**—This makes a very shapely plant, and is in bloom continuously the year around, outdoors or indoors even in the small plants three or four inches high. The bloom is a bright red, and comes so profusely as to almost cover the entire plant; very desirable.

**HOLSTII**—Brilliant vermilion, fine.

**VARIEGATED HOLSTII**—The variegated form of Holstii.

	Doz.	100	1000
2 1/4 inch pots.....	\$0.75	\$5.00	\$45.00

## JAPANESE KUDZU VINE

This is the most rapid-growing vine that anyone knows of. By measurement it has been known to grow twenty feet in a week. The foliage is large and tropical. It is entirely hardy. We have prepared and offer pot-grown plants, the kind that has the crown to the plant and the ball of earth to the roots. Two and one-quarter inch pots. 90c per dozen; \$6.50 per hundred; \$60.00 per thousand.

## HARDY ENGLISH IVY

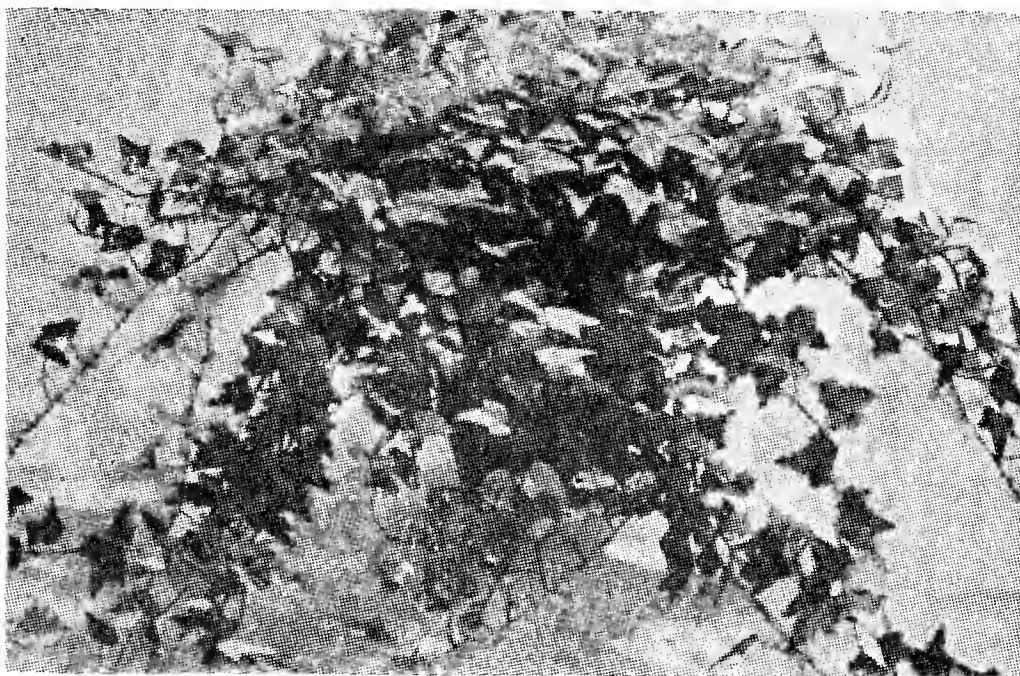
Evergreen with dark, glossy, green leaves.

	Doz.	100	1000
2 1/4 inch pots.....	\$0.75	\$5.00	\$45.00

## THE NEW VARIEGATED ENGLISH IVY

A new introduction that is fast becoming popular. Every florist using English Ivy will be handling this new type. It is decidedly worthwhile.

	Doz.	100
2 1/4 inch pots.....	\$1.10	\$7.00



New Self-Branching Ivy

## NEW SELF-BRANCHING IVY—(Hahn's Variety)

We consider this new Ivy the best variety yet produced. It is rapidly replacing all other Ivies for indoor growing. The plants are self branching and need only a small pinch now and then in order to make beautiful specimens. By all means, try this outstanding new plant.

2 1/4 inch pots, \$1.20 per 12; \$8.00 per 100

## NEW HEART LEAVED IVY

A new Ivy that is bound to become very popular when it is better known. Medium sized distinctly heart shaped leaves. Stock is very scarce.

	Doz.	100
2 1/4 inch pots.....	\$1.65	\$12.00

## GARDENIA VEITCHII

We have an excellent stock of Gardenias this year. Well colored, healthy plants.

	Doz.	100
2 1/2 inch pots.....	\$1.65	\$12.00

## JASMINES

**GRAND DUKE**—This Jasmine is very easily grown, even small plants bearing a profusion of very double creamy white flowers, having a delicious perfume. It can be stored in a dry cellar in winter.

	Doz.	100
2 1/4 inch pots.....	\$1.20	\$8.00

## GRANDIFLORUM (Star Jasmine)

A valuable southern trellis plant, beautiful star-shaped flowers, pure white, very fragrant. Nice plants.

	Doz.	100
2 1/4 inch pots.....	\$1.20	\$8.00

## JUSTICIA (Brazilian Plume Plant)

**SANGUINEA**—Beautiful salmon-pink, plume-like flowers. Beautiful reddish brown foliage. Suitable for pot culture or bedding.

	Doz.	100
2 1/4 inch pots.....	\$1.10	\$7.00

**VELUTINA**—Bright rose-pink flowers, and deep green foliage, heavy in texture, and velvety.

	Doz.	100
2 1/4 inch pots.....	\$1.10	\$7.00

## KALANCHOE GLOBULIFERA VAR. COCCINEA

The new, free and easy growing semi-Succulent that has no rival as a winter blooming pot plant. The bright scarlet Bouvardia-like flowers will keep eight weeks without fading.

Per 12	Per 100
\$0.90	\$6.00

## MANETTIA BICOLOR (Climbing Firecracker Plant)

Can be grown in the house or garden equally well. In the house it can be trained about a window, forming a wreath of bloom summer and winter. Flowers are intense scarlet, shading into flame, tipped with bright golden-yellow, and are covered with a thick scarlet-moss.

Doz.	100
\$1.10	\$7.50

## MESEMBRYANTHEMUM—WAX OR ICE PLANT

Suitable for rock work, hanging baskets, and as a pot plant. Bushy growth, free flowering, a constant bloomer. Flowers pink. 75c per 12; \$5.00 per 100.

## MOONFLOWER (Ipomea Maxima)

A giant in growth and flower and wonderfully fragrant. The flower oftentimes measuring from six to seven and one-half inches across, and are produced in such wonderful profusion that they completely cover the vine with a veil of glistening white.

	Doz.	100	1000
2 1/4 inch pots.....	\$0.75	\$5.00	\$45.00

## NANDINA (Domestica)

The delicate foliage of the Nandina is a brilliant dash of gorgeous orange red of crimson color in winter. It is dense and stocky, being one of the dwarfish plants of Japanese gardens. The leaves are rich red when young, dark green at maturity, and boldly colored in winter. Nandina thrives well in any well drained, loamy soil. In autumn is covered with showy clusters of small red berries.

	Doz.	100	1000
2 1/4 inch pots.....	\$1.20	\$8.00	\$75.00

# Plants and Bulbs for Greenhouse and Nursery Planting (CONTINUED)

## PEDILANTHUS VARIEGATUS

The most beautiful narrow leaved foliage plant we have ever grown. When grown into finished plants, in 4 and 5 inch pots, it is in great demand. In the winter months the light green leaves produce a pinkish border. You will be growing this plant eventually. 2¼ inch pots, Doz. \$1.20; 100, \$8.00.

## OLEANDERS

These old-fashioned shrubs are becoming immensely popular again. We are growing and selling them by thousands. No plant makes more handsome specimens in tubs for the veranda or yard.

**CRIMSON QUEEN**—Bright crimson color, a scarce shade in this plant. \$1.35 per dozen; \$10.00 per 100.

**DOUBLE YELLOW**—Large flowers of bright clear yellow.

**ROSEA**—Has double pink flowers. The old favorite. Very sweet.

**LILIAN HENDERSON**—Has double white flowers of the largest size. Fragrance like the old double pink. Scarce.

Doz.	100	1000
\$1.00	\$7.00	\$65.00

## OTAHEITE ORANGE

As a pot plant this lovely dwarf Orange is one of the most novel and beautiful that can be grown. Its far-famed delicate and fragrant blossoms make it a decided pot novelty.

Doz.	100	1000
2¼ inch	\$1.00	\$7.00 \$65.00

## PACHYSANDRA TERMINALIS

The Ideal American Ground-Cover Plant

We are now growing this immensely popular and useful plant in large quantities. Well-branched plants.

Doz.	100	1000
½ inch pots	\$1.00	\$7.00 \$65.00

## PEPEROMIA

**FLORIDANA (Obtusifolia)**—Plentiful oval, convex leaves of large size; a smooth, shiny surface of brilliant green.

Doz.	100
2¼ inch	\$0.85 \$6.00

**SANDERSII**—"Watermelon Begonia"—Very pleasing, the leaves showily striped.

Doz.	100
2¼ inch	\$1.20 \$8.00

## PHILODENDRON CORDATUM

Florists have found an unusually large demand for this valuable trailing vine and it can be merchandised with the assurance of giving utmost satisfaction with a minimum of care.

Doz.	100
2½ inch pots	\$1.20 \$8.00

## PILEA (Artillery Plant)

Desirable for filling in hanging baskets, window boxes, vases, etc. It also makes a graceful plant as a single specimen.

Doz.	100	1000
2¼ inch	\$0.70	\$5.00 \$45.00

## LEMON PONDEROSA

A Fine Pot Plant for Florists' Sales

Fruits when quite small, making a unique and valuable plant for florists' sales.

Doz.	100	1000
2¼ inch	\$1.00	\$7.00 \$65.00

## POTHOS

**AUREUS**—Broadly heart-shape, leafy indoor vine; clear green spotted yellow.

Doz.	100
2¼ inch	\$1.20 \$8.00

## PRIMULA OBCONICA (Grandiflora)

M. and M. Strain

Hamburg and Berlin Rose; dark red and crimson.

Doz.	100	1000
2¼ inch pots	\$0.85	\$6.00 \$55.00

## RUPELLIA MOKOYANA

Charming indoor plant for culture in pots or may be used in vases and baskets; of bushy spreading habit and finely marked leaves, which are beautiful

olive-green delicately veined with silver and rich purple underneath. Flowers are exceedingly beautiful, trumpet shaped, and of a rosy-pink color.

Doz.	100	1000
2¼ inch pots	\$0.70	\$5.00 \$45.00

## RUSSELLIA ELEGANTISSIMA (Scarlet Fountain Plant)

A tender shrubby plant, with smooth, somewhat rushlike branches, nodding or pendulous at the top; flowers bright red. Very floriferous during winter. Is of very easy cultivation, fine for basket and pot planting.

Doz.—\$0.70	100—\$5.00	1000—\$45.00
-------------	------------	--------------

## SAGE, HOLT'S MAMMOTH

A variety of unusual substance, strong flavor and superior quality for seasoning.

Doz.	100	1000
2¼ inch pots	\$0.70	\$5.00 \$45.00

## SAINTPAULIA IONANTHA (African Violet)

We offer choice plants of this wonderful pot plant. Flowers deep lavender.

Doz.	\$1.65	100—\$12.00
------	--------	-------------

## SAINTPAULIA BLUE BOY (New)

This beautiful new variety is creating sensational interest wherever grown. Flowers deep rich purple.

Doz.—\$2.00	100—\$15.00
-------------	-------------

## SANSEVIERIA LAURENTI

Doz.	100
3 inch pots	\$2.00 \$15.00

## SANSEVIERIA ZEYLANICA (Zebra Plant)

A beautiful plant, specially adapted for the decoration of drawing room and halls, as it stands dust and drought with impunity and requires scarcely any water. The leaves are beautifully striped crosswise with broad white variegations on a green ground.

Doz.	100
2¼ inch pots	\$0.85 \$6.00

## SALVIAS

The Most Attractive of All Bedding Plants

These are unsurpassed for brilliancy of color. A bed or border of Salvia Splendens will attract more attention than any other bedding plant.

**AMERICA**—The grandest addition to our list of bedding plants. It forms a compact bush, completely covered with rich scarlet flowers.

Doz.	100	1000
2¼ inch pots	\$0.70	\$5.00 \$45.00

## SAXIFRAGA

Basket plant of great beauty, half hardy. Sometimes called Old Man's Beard or Strawberry Geranium.

Doz.	100
2¼ inch pots	\$0.70 \$5.00

## SENECIO SCANDENS (Parlor or German Ivy)

A fast growing vine, with bright green, luxuriant foliage; flowers yellow, in clusters; especially suitable for trellis work, conservatories, hanging baskets or in porch boxes, etc., where the wind does not strike it too hard.

Doz.	100
2¼ inch pots	\$0.70 \$5.00

## TRADESCANTIA (Wandering Jew)

**BICOLOR**—White and Green.

**TRICOLOR**—The highest colored of all the Wandering Jews.

Doz.	100	1000
2¼ inch pots	\$0.70	\$5.00 \$45.00

## VINCA MAJOR VARIEGATA

Well-variegated stock.	Doz.	100	1000
2 inch pots	\$0.70	\$4.50	\$40.00
2¼ inch pots	.80	5.50	50.00
3 inch pots	1.20	8.50	80.00
4 inch pots	2.00	15.00	140.00

## VITIS RHOMBIFOLIA (Grape Ivy)

A graceful trailing vine with dark glossy green leaves. An excellent vine for house culture.

Doz.—\$1.20	100—\$8.00
-------------	------------

# LANTANAS

Although we have been increasing our production of Lantanas in the past several years, the demand has constantly exceeded the supply. For the coming season we have one hundred and fifty thousand plants in prime condition for spring sales. Every florist can handle this plant on a profitable basis—both as a blooming pot plant and as a bedding subject. For general spring sales, shift the plants into 3 or 4 inch pots. We have added several new varieties this year that are very outstanding.

## SENSATION (NEW)

Offered for the first time. Large flowers of lavender and yellow. Medium dwarf in growth. Everyone admires Sensation, as its coloring is most brilliant out of doors. Fine for both pots and bedding.

## CRAIGI

A comparatively new variety that we consider the best of all varieties for pot blooming. Very dwarf in growth (more dwarf than M. Schmidt) and much deeper in color than any of the red varieties. For general usefulness this is the best variety as it combines dwarfness with excellent color and floriferousness.

## M. SCHMIDT

For years M. Schmidt has been the most popular of all Lantanas. It is medium dwarf in growth, the plants being covered with flowers all through the summer months. Red, orange, and yellow shades combine to make a general orange effect. Fine for both pots and bedding.

## TETHYS

Tethys is the most widely grown of the yellow varieties. Flowers of bright lemon yellow produced in great abundance. This is our favorite yellow as it has every desired characteristic that we like in a Lantana. Fine for both pots and bedding.

## ALBA PERFECTA

There is always a demand for white Lantanas. This is the best pure white variety. Fine for both pots and bedding.

## RADIATION

We find that Radiation and M. Schmidt are identical. Therefore, those who order Radiation will receive the true M. Schmidt strain.

## COMTE DE BIENCOURT

Large flowers of lavender pink abundantly produced. Tall in growth but with proper pinching is very fine for pot blooming.

## LA PLEUR D'OR

This variety is the best of the golden yellow Lantanas. Very dwarf in habit—more so than any other variety. Its clear golden yellow flowers are produced in great profusion all through the summer months. Fine for both pots and bedding.

## SOUTHERN

In recent years, Southern has become one of the more popular varieties, because of the beauty of its coloring. The variety is dwarf in growth and the flowers are a combination of pink and yellow that is distinctly beautiful. Fine for both pots and bedding.

## JACOB SCHULTZ

This variety has been grown for many years and is still considered one of the best. It is inclined to be very vigorous and taller than others but there are many places where these features are desirable. Flowers combine red and yellow to give a general orange effect. If properly pinched, very fine for pots.

## WEeping LANTANA

A Drooping Plant of Great Beauty. One of the finest vining or drooping plants grown. The plant has a most graceful drooping habit, grows very rapidly and flowers continually summer and winter, producing large clusters of delicate lilac pink flowers.

## DWARF BEAUTY (NEW)

One of the best new Lantanas. Very dwarf in growth. Plant is covered at all times with orange yellow flowers. Probably by calling this variety a "Dwarf Schmidt" we come more closely to an adequate description.

## PRICES — ALL VARIETIES

2 1/4 Inch Pots

\$0.85 per 12, \$5.50 per 100, \$50.00 per 1000

# Geraniums

No plant lends itself to such general usefulness as the Geranium. For pot work and bedding it is unsurpassed. We carry at all times immense quantities of this indispensable florist's plant but have sold out early the past few seasons. Make your reservations early.



**ENCHANTRESS FIAT**—A sport of Fiat that is fast becoming the most popular pot geranium ever introduced. It is by far the most prolific of all double geraniums—it may be finished in four inch pots with an average of four to five large flower heads. In color, beautiful Enchantress pink. Stock is very limited. \$1.20 per 12, \$8.00 per 100, \$75.00 per 1000.

**ROSEBUD**—We have a limited stock of this very rare variety. The flowers are rich red when open. The buds, before opening resemble miniature rose buds. This is the most distinctly different geranium we have ever grown. For a variety that is really distinct and different, try Rosebud. 2¼ inch pots, \$2.00 per 12, \$15.00 per 100.

**MICHELL'S SENSATION**—A new geranium (cross between Ricard and Jean Viaud). It is a very vigorous free blooming variety. The flowers are brilliant poinsettia-red and are produced in great profusion.

	<b>Per 12</b>	<b>Per 100</b>	<b>Per 1000</b>
2¼ inch pots....	\$0.85	\$5.50	\$50.00

**IRVINGTON BEAUTY (New)**—Since introducing this beautiful new Geranium in 1927, the demand has constantly exceeded the supply. It is one of the most prolific of all Geraniums, flowering earlier and later than all other varieties, every branch producing an immense truss of rosy salmon pink flowers. It is not unusual for a four-inch pot plant of Irvington Beauty to show five to seven flower heads at one time. Every progressive florist should grow Irvington Beauty for increased profits.

	<b>Per 12</b>	<b>Per 100</b>	<b>Per 1000</b>
2¼ inch pots.....	\$0.85	\$5.50	\$50.00

**FIAT (The True Variety)**—No Geranium has ever been so favorably received as Fiat. We have the true stock of Fiat, and will have the largest supply in the country this year. Florists who are not growing Fiat are missing the most brilliant colored of all Geraniums. Of good growth, and an intense dark salmon pink in color.

	<b>Per 12</b>	<b>Per 100</b>	<b>Per 1000</b>
2¼ inch pots.....	\$0.85	\$5.50	\$50.00

**DOUBLE FLOWERING VARIETIES**—2¼ inch pots.

	<b>Per 12</b>	<b>Per 100</b>	<b>Per 1000</b>
Price, except as noted....	\$0.85	\$5.50	\$50.00

**ALPHONSE RICARD**—Still the most widely used of the red varieties. For pot work and outside planting Ricard is unsurpassed. Large trusses of brilliant vermilion.

**BEAUTE POITEVINE**—For many years Poitevine has ranked as the leading pink Geranium. In color, beautiful shrimp-pink. One of the best for pot work.

**COMTESSE DE HARCOURT**—One of the two best white Geraniums. The large trusses of pure white flowers hold the color in excellent shape.

**HELEN MICHELL**—The universal favorite where planted. Helen Michell cannot be surpassed in either pot work or outside planting. Enormous trusses bear brilliant scarlet flowers that do not fade in the sun.

**LA FAVORITE**—In this Geranium we have the finest double white in cultivation. The flowers are borne in large trusses of the purest snow white, retaining this pure whiteness even in the height of summer. For winter blooming La Favorite is excellent. Your profits will increase by using this favorite.

**MADAME BARNEY**—A very profuse bloomer, the individual florets being of very large size. The color is pure deep pink. Considered the perfect bedding Geranium.

**MADAME LANDRY**—The salmon-pink Geraniums have been in constant demand for the past five years. We have never been able to grow enough of Madame Landry to supply the demand. The color is dazzling salmon-pink with a slight scarlet shading. The flower heads are large and carried on long stems.

**MARQUIS DE MONTMART**—Commonly known as the Blue Geranium. In color a rich soft purple, a very striking color. Of good growth.

**MRS. RICHARD GLOEDE**—A very good new Geranium that is being grown more widely each year. The color is similar to American Beauty but more brilliant. Of good branching growth.

**RED BARNEY**—A new variety of brilliant red that is very prolific. For pot forcing it is among the leaders. Of good branching habit.

**RADIO RED**—The most intense scarlet in cultivation. The color is so brilliant that it instantly commands attention. Radio Red is fast becoming the most widely used red variety. It is the best red Geranium.

## SWEET-SCENTED GERANIUMS

**LEMON**—The foliage is pronouncedly lemon scented.

**NUTMEG**—Foliage has the true nutmeg fragrance.

**ROSE**—The famous sweet rose-scented Geranium; very fragrant.

**WALNUT**—Oak shaped leaves, walnut scented.

Per 12, \$0.90; per 100, \$6.00; per 1000, \$55.00

### NOTICE

Geraniums are scarce again this year. We have propagated large stocks of all varieties but expect the demand to exceed the supply. It will be advantageous to place your order early.

No plant orders filled at these prices for less than 6 of a variety, except as noted. Less than 25 filled at dozen rates; 25 to 200 of a variety at hundred rates. Over 200 of a variety at thousand rates where thousand rates are quoted.



# ▼ OUTSTANDING PLANT NOVELTIES FOR 1938 ▼

*We are pleased to offer herewith several very outstanding new plant introductions which will meet with popular demand in 1938. The popularity of these plants is now well established; every florist will profit by offering these introductions to his trade.*



Improved Crimson King

## NEW CARNATION Improved Crimson King

**The Finest Hardy Everblooming  
Carnation Yet Introduced**

The Truest Hardy Outdoor Carnation. A beautiful strain of hardy pink, which resembles most of all the indoor Carnation, blooming in great abundance all summer, flowers full double and of brilliant crimson color. Excellent for cutting, very hardy and extremely fragrant.

This new introduction is, we believe, of great value to the trade not only as a cut-flower but as well for garden show and particularly in connection with rock garden planting. Rock Gardens are of great interest today and here is a plant that will surely please your clients. 2½ inch pots, \$1.65 per 12, \$12.00 per 100, \$100.00 per 1000.



## New Oriental Poppies

NO flower can draw more instant attention and leave a more lasting and pleasing impression than a bed of carefully selected Oriental Poppies. Either singly, or in mass, they give a touch of barbaric splendor offered by no other flower. For five years we have been carefully selecting new and better varieties which show superior merit and advancement over old types. For the first time, we are in position to offer in quantity a selected list of new varieties, each one of which is distinctly superior. 2¼ inch pot plants.

**PINK SPLENDOR (NEW)**—A new poppy introduced for the first time this year. We consider Pink Splendor the finest pink poppy produced to date. The individual flowers are of medium size and more abundantly produced than in any pink variety. In color, a beautiful shade of bright salmon-pink without spot or blemish of any kind. Stock is limited. \$3.25 per 12; \$25.00 per 100.

**CAVALIER**—A new seedling from the late poppy specialist, Dr. J. H. Neeley. Crinkly petals of deep scarlet red. One of the best. \$3.25 per 12; \$25.00 per 100.

**JEANNE MAWSON**—Large flowers of geranium pink. Tall, erect stems. A beauty. \$2.00 per 12; \$15.00 per 100.

**LULA A. NEELEY**—This variety is our favorite. Good strong stems support flowers of brilliant oxblood red, the color holding until the last. We predict that this variety will become the most popular Poppy in America within a few years. \$1.50 per 12; \$10.00 per 100.

**MRS. PERRY**—Although this Poppy has been on the market for several years, it is not widely distributed. A bright clear pink color combined with vigorous growth makes Mrs. Perry one of the most beautiful varieties. \$1.20 per 12; \$8.00 per 100.

**PROSERPINE**—Of the scarlets, Proserpine, with its striking buds, heavy stems and massive flowers, is undoubtedly the best. You cannot be without this brilliant variety. \$1.20 per 12; \$8.00 per 100.

**PURITY**—Considered by many to be the finest of all poppies. Pure soft pink without spot or blemish of any kind. New. \$3.25 per 12; \$25.00 per 100.

**WURTEMBERGIA**—A striking flower of great size and substance. Brilliant scarlet in color. \$1.50 per 12; \$10.00 per 100.

New and  
Rare  
Plants  
for  
Fancy  
Pottery,  
Miniature  
Gardens,  
Etc.

\$1.65  
per 12,  
\$12.00  
per 100



New and  
Rare  
Plants  
for  
Fancy  
Pottery,  
Miniature  
Gardens,  
Etc.

\$1.65  
per 12,  
\$12.00  
per 100

Opuntia Monocantha  
Opuntia Fragilis

Aloe Nobilis  
Peanut Cactus

Opuntia Cylindrica  
Aloe Brevifolia

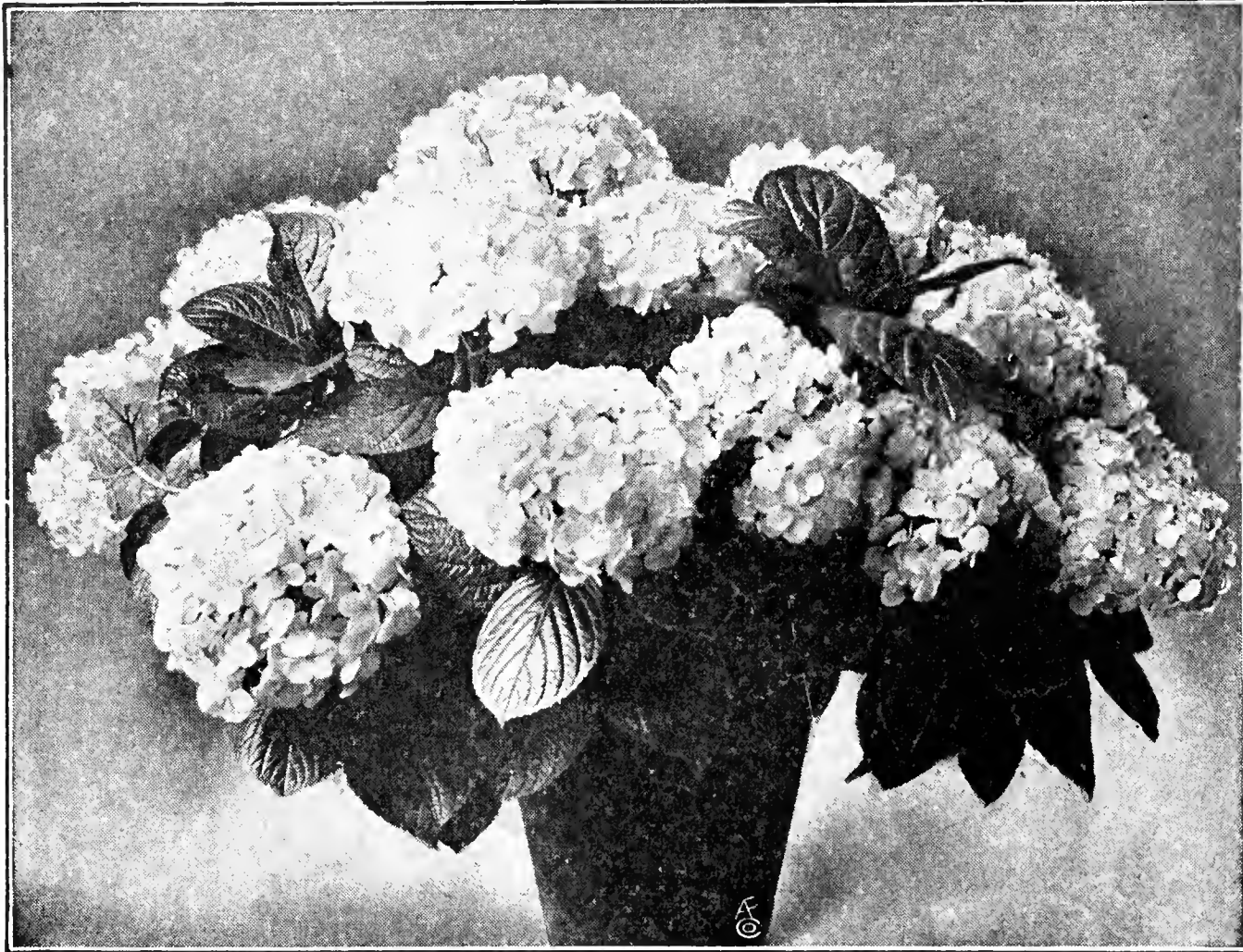
Opuntia Spiralis  
Euphorbia Mamillaris  
Opuntia Microdasys  
Echinopsis Eyriesii

PLANTS FOR MINIATURE GARDENS, ETC.	Per 12	Per 100
ALOE VARIEGATA (Tiger Aloe).....	\$2.75	\$20.00
ASPEDUM FERN.....	.85	6.00
BUXUS SEMPERVIRENS.....	.85	6.00
CHINESE EVERGREEN.....	1.75	12.00
CRASSULA ARBORESCENS.....	.85	6.00
CRASSULA LYCOPODIODES.....	.85	6.00
CRASSULA MONTICOLA.....	1.50	10.00
CRASSULA PERFOSSA.....	1.50	10.00
CRASSULA PSEUDOLYCOPODIODES.....	.85	6.00
CRASSULA TETRAGONA.....	.85	6.00
CRYPTOMIUM (Holly Fern).....	.85	6.00
ECHEVERIA SECUNDA GLAUCA.....	1.20	8.00
ECHEVERIA WEINBERGII.....	.85	6.00
EPIPHYLLUM (Christmas Cactus).....	1.20	8.00
EUONYMUS JAPONICA VARIEGATA.....	.85	6.00
EUPHORBIA SPLENDENS.....	1.50	10.00
FERNS—Dish varieties.....	.85	6.00
MOSS FERN—SELAGINELLA.....	.85	6.00
GREVILLEA ROBUSTA.....	.85	6.00
HEXIA—IRISH MOSS or BABY'S TEARS.....	.85	6.00
ENGLISH IVY.....	.75	5.00
VARIEGATED IVY.....	1.00	7.00
KALANCHOE FLAMMEA.....	1.50	10.00
KALANCHOE MARMORATA.....	1.50	10.00
KALANCHOE TUBIFOLIA.....	.85	6.00
KLEINIA FICOIDES.....	1.50	10.00
MESEMBRYANTHEMUM DELTOIDES.....	.85	6.00

PLANTS FOR MINIATURE GARDENS, ETC.	Per 12	Per 100
MESEMBRYANTHEMUM ECHINATUM.....	\$1.50	\$10.00
OPHIOPOGON JAPONICA.....	.85	6.00
PACHYSANDRA TERMINALIS.....	1.00	7.00
PEPEROMIA OBTUSIFOLIA.....	.85	6.00
PORTULACARIA AFRA.....	.85	6.00
SAXIFRAGA SARMENTOSA.....	.75	5.00
SANSEVIERIA ZEYLANICA.....	.85	6.00
SANSEVIERIA LAURENTI.....	2.00	15.00
SEDUM ADOLPHI.....	1.50	10.00
SEDUM DENDROIDEUM CRYSTATA.....	.85	6.00
SEDUM PACHYPHYLLUM.....	1.50	10.00
SEDUM STAHLII.....	.85	6.00
SEDUM TRELEASEI.....	.85	6.00
SEMPERVIVUM HAWORTHII.....	.85	6.00
SEMPERVIVUM TECTORUM.....	1.00	7.00

Realizing that many florists are unacquainted with most of these plants, we are offering three special collections of Miniature Garden plants. These collections include the best selling plants and are exceptional values in every particular.

**\$6.00      \$8.00      \$12.00**  
In ordering, state Miniature Garden Collection



## Franco-German Hydrangeas

### FOR GROWING ON AND LINING OUT

We are one of the largest growers of young Hydrangeas in America, and for 1938 will have approximately 150,000 plants to offer. These young plants are of late summer and early fall propagation, and are carried through the winter months in cool houses. Plants of this grade are greatly superior to those propagated during the spring months. We supply numerous leading Hydrangea growers with their young stock for growing on. We can serve you to your advantage in this line.

### New Franco-German Sorts

2 1/4 inch pots: \$1.75 per 12; \$12.50 per 100;  
\$12.00 per 1000.

- FREYA**—Beautiful new variety of glossy carmine. Many growers consider Freya one of the best.
- GERTRUDE GLAHN**—A new German variety that is being grown in very large quantities by forcers. Very large flowers. Dark rose pink.
- GOLIATH**—One of the best new German varieties. Flowers of great size. Deep rose pink. Adapted for blue coloring. Early.
- GUDRUN**—Beautiful clear pink. Good forcer.
- HELGE**—Probably the most popular of the new sorts. Deep carmine red. Very early.
- LeCYGNE**—Large pure white flowers. One of the leading pure white sorts.
- MARECHAL FOCH**—Is rapidly displacing Trophee as the leading Hydrangea. Very early and forces easily. Flowers of deep carmine.
- PARSIFAL**—An extremely vigorous new variety that is being grown more each year. Deep carmine rose. Early.
- PEER GYNT**—Is proving one of the best deep carmine forcers.
- TROPHEE**—For years the leading early variety. Deep carmine rose.

### Standard French Varieties

2 1/4 inch pots: \$1.20 per 12; \$8.50 per 100;  
\$80.00 per 1000.

- AVALANCHE**—For years one of the best standard whites.
- E. G. HILL**—A reliable early pink sort. Free flowering.
- MME. E. MOILLERE**—The early well-known white.
- MOUSSELINE**—For many years the most dependable variety for blue coloring.
- OTAKSA**—The old reliable pink variety for all purposes. Excellent for outside planting.
- SOUV. De MME. CHAUTARD**—The most dependable early pink variety. Most popular of all varieties.
- LORELEY**—A magnificent new variety of bright deep carmine. Early.
- RHEINGOLD**—We recommend Rheingold as one of the best. Is of splendid growth and forces readily. Flowers carmine pink.

## Hardy Phlox

Strong started plants from 2 1/4 inch pots: \$5.00 per 100; \$45.00 per 1000, except as noted.

- AFRICA**—Brilliant carmine red, with deeper eye.
- B. COMPTE**—Brilliant, rich French purple or wine color.
- BEACON**—Vivid cherry red. Very outstanding.
- BRIDESMAID**—Pure snow white with carmine eye.
- CAROLINE VANDENBURG**—The best lavender blue. \$1.20 per 12; \$8.00 per 100.
- DAILY SKETCH**—(New) — Soft Salmon pink with carmine eye. \$1.20 per 12; \$8.00 per 100.
- DRAMA**—(New)—Large individual flowers in rounded trusses. A rich blue purple with a deeper eye. \$1.20 per 12; \$8.00 per 100.
- ECLAIREUR**—Bright carmine. A very popular sort.

**EMAIN MACHA**—Brilliant cardinal red. Dwarf in growth.

**ENCHANTRESS**—Soft salmon pink with dark red eye.

**ETHEL PRITCHARD**—Beautiful shade of rose mauve.

**EVELYN**—(New)—Introduced as the "Pink Miss Lingard." The trusses are somewhat similar to this variety and it also has the free flowering habit of Lingard. Flowers are of medium size and a soft lively pink in color. \$1.20 per 12; \$8.00 per 100.

**FIREBRAND**—Flaming orange scarlet. Very outstanding.

**GRAF ZEPPLIN**—Large white flowers with vermilion eye.

**HAUPTMAN KOEHL**—(New)—Rich blood red. \$1.20 per 12; \$8.00 per 100.

**H. B. MAY**—Large trusses of pure white with carmine center.

**INDEPENDENCE**—A very fine pure white variety.

**LILLIAN**—(New)—Salmon pink with crimson eye. \$1.20 per 12; \$8.00 per 100.

**MISS LINGARD**—Large flowers of waxy white.

**MRS. CHARLES DORR**—Very tall variety. Bright mauve.

**MRS. JENKINS**—Early, large pure white.

**PAINTED LADY**—A very tall silvery pink with red eye.

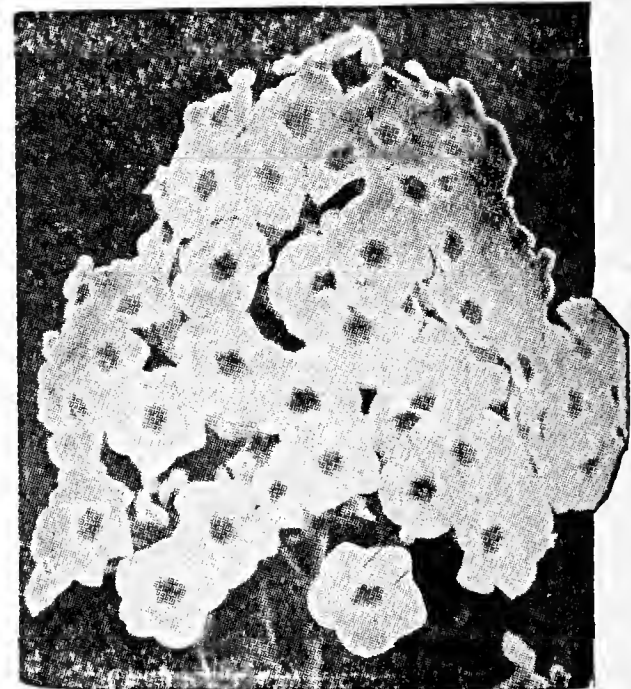
**R. P. STRUTHERS**—Rosy Carmine with red eye. Very fine.

**RHYNSTROM**—Very beautiful rose pink.

**RIVERTON JEWELL**—Peach blossom pink with deeper eye.

**SALMON QUEEN**—Beautiful shade of salmon pink.

**THOR**—Large flower of salmon pink with red eye.



Phlox Independence



# NOVELTIES AND SPECIALS

## A Page of Worthwhile Novelties and Profitable Subjects

### NEW HARDY ASTER WARTBURG STAR

Unequaled as a Cut Flower. The most beautiful of all hardy Asters. Long stemmed flowers of rich sky blue with golden centers—the most gorgeous color combination imaginable—are produced in great profusion. In this latitude, Wartburg Star blooms for Memorial Day and is perfectly hardy. We consider ourselves fortunate in being one of the few nurseries able to offer this beautiful new plant. 2¼ inch pots, \$1.50 per 12; \$10.00 per 100.

### PACHYSANDRA TERMINALS

We are now growing this popular and useful plant in large quantities. Well branched plants.

	Per 12	Per 100	Per 1000
2½ inch pots .....	\$1.00	\$7.00	\$65.00

### VINCA MINOR (Grave Myrtle)

Probably the best known ground cover plant.

	Per 12	Per 100	Per 1000
Field Clumps .....	\$0.90	\$6.00	\$50.00

### NEW TRITOMA TOWERS OF GOLD

Undoubtedly the finest hardy perennial introduction for 1937. Its extremely large flowers of golden yellow are produced more abundantly than in any other Tritoma. See back cover for illustration.

Flowering size roots: \$3.25 per 12; \$25.00 per 100.

### TRITOMA PFITZERI RED HOT POKER

No flower is more strikingly beautiful than the Tritoma. For summer and fall cutting it is being used very profitably. Every florist should plant freely of this noble perennial. Field grown divisions, \$1.20 per 12; \$8.00 per 100; \$70.00 per 1000. Smaller plants from 2½ inch pots, 85c per 12; \$6.00 per 100; \$55.00 per 1000.

### NEW BABY'S BREATH ASTER

A new introduction that is rapidly becoming very popular for garden and cut flower planting. It is distinctive in growth, making fine, round clumps 15 to 18 inches high. The foliage is dark green. Its flowering period, which is exceptionally long, begins about the first of August. As an alternative for Gypsophila or filling in cut flower work it is being extensively used. It is also considered one of the best Rock Garden and perennial plants introduced in recent years. The flowers are pure white in color, and about one-half to one inch in diameter.

Strong plants that will flower first season, \$1.50 per 12; \$10.00 per 100; \$90.00 per 1000.

### KOREAN CHRYSANTHEMUM

A remarkable new perennial of iron-clad hardness from Korea, forming fine large clumps 2 to 3 feet in both diameter and height. The large white flowers have golden centers, resembling a glorified Oxeye Daisy, the petals often turning to a light claret pink. It blooms in the greatest profusion in early October to early December. Of easy culture, thriving in any good garden soil. We believe the Korean Chrysanthemum possesses exceptional possibilities. For cutting there is nothing quite like it for the late fall. \$1.00 per 12; \$7.00 per 100; \$60.00 per 1000.

### CLIMAX

#### NEW CUT FLOWER ASTER

A valuable addition to the list of cut flower perennials. Flowers of beautiful lavender blue produced in great abundance in the early fall. \$1.00 per 12; \$7.00 per 100; \$60.00 per 1000.

### BLEEDING HEARTS

#### DICENTRA SPECTABILIS

How many times have you ordered Bleeding Hearts during the winter and early spring only to receive the usual reply, "Sorry, sold out!" Why not grow your own! We offer you a good quality of A No. 1 quality plants from 2¼ inch pots. \$1.10 per 12; \$7.50 per 100; \$70.00 per 1000.

### PANSY PLANTS

G. & R. ROYAL GIANT STRAIN—Ready to bloom when shipped. \$1.50 per 100; \$12.50 per 1000.

## BUDDLEIA—The Butterfly Bush

This is perhaps the most popular of our garden and hardy border shrubs, being almost continually in flower from July until frost. The plant grows to a height of about four feet and produces an abundance of flower spikes which are made up of myriads of miniature florets of beautiful shades of lilac. The flowers are very fragrant and attract butterflies in great numbers from which fact the shrub has gained its name.

### ILE DE FRANCE (New)

For brilliance of color, grace of its flower spikes, and uniform habit of growth, this new Buddleia greatly surpasses all other varieties in cultivation. The plants develop into well-branched, symmetrical bushes 3 to 4 feet high. The individual flower spikes measure 6 to 9 inches in length. They are brilliant rosy purple, with a violet suffusion. Their fragrance adds another feature to their beauty. We offer strong thrifty plants that will produce an abundance of flowers this summer. \$1.20 per 12; \$8.00 per 100; \$75.00 per 1000.

### ALTERNIFOLIA (New)

This is the hardiest "Butterfly Bush" yet introduced. Only once in a lifetime do we find a new shrub of such outstanding merit as this. While other Buddleias freeze down to the ground every winter, and during the summer grow to a height of five or six feet, being too large for a perennial border and not suitable for among shrubs, this wonderful new Buddleia DOES NOT FREEZE DOWN in winter, but is just like other shrubs, filling a long-wanted place for Buddleias. It is a very distinct and charming sight while in bloom, with its long arching or pendulous branches covered with clusters of lilac-purple flowers from early to mid-summer. \$1.20 per 12; \$8.00 per 100; \$75.00 per 1000.

### VEITCHIANA

Beautiful violet mauve; a splendid Summer flowering shrub. Absolutely hardy under any conditions; flowers are borne on long cylindrical spikes; 12 to 15 inches in length. 75c per 12; \$5.00 per 100; \$45.00 per 1000.

### VARIABILIS WILSONI

The latest of all the summer lilacs to flower, blooming in September. It bears immense, tail-like spikes sometimes 15 inches long, of bright rosy lilac flowers with orange eye. 75c per 12; \$5.00 per 100; \$45.00 per 1000.

### LAVENDER GLORY (New)

A new variety that is distinctly beautiful. The flowers are abundantly produced in graceful sprays during the Summer months. In color, rosy lilac. Stock is very scarce. \$1.20 per 12; \$8.00 per 100.

### FARQUHARI

A low-growing pendulous, spreading shrub, with rich green foliage and silver reverse, bearing in late summer, long racemes of purple flowers. 75c per 12; \$5.00 per 100; \$45.00 per 1000.

### VARIABILIS MAGNIFICA

This is really a shrub but the top usually freezes back, and new growth starts from the root like other perennials. Plants grow three to four feet and are covered with long racemes of lilac-flowers all summer. 75c per 12; \$5.00 per 100; \$45.00 per 1000.

# Chrysanthemums

## FOR THE FLORIST

### ROOTED CUTTINGS AND 2¼-INCH POT PLANTS

G. & R. crops approximate 75,000 clean, well-rooted cuttings every two weeks. We grow a very complete collection of the best commercial varieties. In order to receive your shipment in ample time, orders for cuttings should be placed as early as possible—to insure complete and prompt delivery. No orders will be filled for less than 25 rooted cuttings of a variety.

### LARGE FLOWERING—YELLOW VARIETIES

Plants from 2¼-in. pots at \$1.50 per 100 additional

Variety	Select Bud	Price	
		Rooted Per 100	Cuttings 1000
CARDONIA—Deep rich yellow. Matures Nov. 1-10.....	Terminal	\$3.00	\$27.50
CELESTRA—Fine early yellow. Matures Oct. 10.....	Terminal	3.00	27.50
CHRYSOLORA—Incurved excellent yellow. Matures Oct. 15.....	Aug. 15	3.00	27.50
CITRONELLA—Yellow, good shipper. Matures Oct. 25.....	Aug. 31	3.00	27.50
COLUMBUS DISPATCH—Yellow, very large bloom. Matures Nov. 15.....	Sept. 1	3.00	27.50
FRIENDLY RIVAL—Golden yellow. Matures Nov. 20-30.....	Sept. 10	3.00	27.50
GOLDEN GLOW—Bright yellow. Matures Sept. 1.....	July 10	3.00	27.50
GOLDEN HERALD—Deep golden yellow. Matures Oct. 10-15.....	Aug. 25	3.00	27.50
GOLDEN MISTLETOE—Good late, light yellow. Matures Dec.....	Sept. 30	3.00	27.50
GOLDEN PEARSON—Yellow sport of Gladys Pearson. Matures Nov. 20-30	Sept. 30	3.00	27.50
GOLDEN TOPAZ—Golden yellow. Matures Nov. 10.....	Sept. 10	3.00	27.50
GOLD LODE—Best early yellow. Matures Oct. 1.....	Aug. 25	3.00	27.50
GOOD NEWS—Golden yellow. Matures Oct. 25.....	Aug. 30	3.00	27.50
HONEYDEW—Canary yellow. Matures Nov. 15.....	Terminal	3.00	27.50
MAJOR BONNAFON—Good clear yellow. Matures Nov. 15.....	Sept. 10	3.00	27.50
MRS. F. D. ROOSEVELT—Bright yellow. Matures Nov. 15.....	Sept. 10	3.00	27.50
MRS. H. E. KIDDER—Bright yellow, best at this season. Matures Oct. 25	Aug. 25	3.00	27.50
MRS. NELLIE T. ROSS—Light yellow. Matures Nov. 25.....	Oct. 10	3.00	27.50
MRS. R. M. CALKINS—Golden yellow. Matures Nov. 25-30.....	Sept. 20	3.00	27.50
SMITH'S SUPERLATIVE—Bright yellow. Matures Oct. 25.....	Aug. 25	3.00	27.50
SUNGLOW—Bright yellow. Matures Oct. 25.....	Aug. 15	3.00	27.50
WHITTIER—Bright incurved yellow. Matures Nov. 15.....	Sept. 15	3.00	27.50
YELLOW MEFO—Yellow sport of Mefo. Matures Nov. 20.....	Sept. 15	3.00	27.50
YELLOW MONUMENT—Yellow sport of Monument. Matures Nov. 5-15	Sept. 10	3.00	27.50

### LARGE FLOWERING—PINK AND RED VARIETIES

Plants from 2¼-in. pots at \$1.50 per 100 additional

Variety	Select Bud	Price	
		Rooted Per 100	Cuttings 1000
GARNET KING—Red. Matures Nov. 20-30.....	Sept. 20	\$3.00	\$27.50
HARVARD—Crimson. Matures Nov. 30.....	Sept. 30	3.00	27.50
JUSTRITE—Bright pink. Matures Oct. 15-25.....	Terminal	3.00	27.50
J. W. PRINCE—Pink, dark sport of Chieftain. Matures Nov. 1.....	Aug. 30	3.00	27.50
LUSTRE—Lavender pink. Matures Oct. 10-25.....	Aug. 25	3.00	27.50
PINK CHADWICK—Pink. Matures Nov. 25-30.....	Terminal	3.00	27.50
PINK DELIGHT—Rose pink. Matures Oct. 25.....	Sept. 10	3.00	27.50
PINK FRICK—Pink, sport of Helen Frick. Matures Nov. 15.....	Sept. 10	3.00	27.50
PINK MISTLETOE—Pink, good late. Matures Dec.....	Sept. 30	3.00	27.50
ROSE CHOCHARD—Pink. Matures Oct. 20.....	Aug. 15	3.00	27.50
ROSE GLORY—Pink. Matures Oct. 15-20.....	Terminal	3.00	27.50
ROSE PERFECTION—Bright pink. Matures Nov. 5-10.....	Sept. 10	3.00	27.50
THANKSGIVING PINK—Dark pink. Matures Nov. 25-30.....	Sept. 15	3.00	27.50
T. W. POCKETT—Pink. Matures Nov. 1-15.....	Aug. 10	3.00	27.50
WOLF'S PINK—Bright pink. Matures Oct. 10.....	Aug. 25	3.00	27.50

**LARGE FLOWERING—WHITE VARIETIES**

Plants from 2¼-in. pots at \$1.50 per 100 additional

Variety	Select Bud	Price	
		Rooted Per 100	Cuttings 1000
AMBASSADOR—White, largest early variety. Matures Oct. 15-20.....	Terminal	\$3.00	\$27.50
BETSY ROSS—Incurved, one of the best. Matures Nov. 5.....	Aug. 25	3.00	27.50
CHAS. W. JOHNSON—Pure white. Matures Oct. 25.....	Sept. 10	3.00	27.50
CHATTANOOGA—White, very popular. Matures Dec. 1.....	Sept. 20	3.00	27.50
EDGAR STILLMAN KELLY—Incurved white. Matures Nov. 15.....	Sept. 15	3.00	27.50
LUSTRE SUPREME—Sport of Lustre. Opens shell pink, fades to pure white. Matures Oct. 10.....	Aug. 25	3.00	27.50
MEFO—Good large white. Matures Nov. 20.....	Sept. 15	3.00	27.50
MONUMENT—Strong growing white. Matures Nov. 5-10.....	Sept. 10	3.00	27.50
OCONTO—Popular midseason white. Matures Oct. 25.....	Aug. 25	3.00	27.50
QUAKER MAID—Large flowers, white. Matures Oct. 20.....	Aug. 25	3.00	27.50
SILVER SHEEN—Pure white, good keeper. Matures Oct. 20.....	Aug. 30	3.00	27.50
SMITH'S EARLY WHITE—Good early variety. Matures Oct. 1.....	Aug. 10	3.00	27.50
SNOW WHITE—Best incurved commercial white. Matures Nov. 1.....	Terminal	3.00	27.50
TOM BROWNE—Extra large white. Matures Nov. 20-30.....	Terminal	3.00	27.50
TOWANTIC—Large flowers. Matures Nov. 25-30.....	Sept. 10	3.00	27.50
WHITE FRICK—Good white. Matures Nov. 15.....	Sept. 10	3.00	27.50
WHITE MISTLETOE—Late white. Matures Dec.....	Sept. 30	3.00	27.50

**LARGE FLOWERING—BRONZE VARIETIES**

Plants from 2¼-in. pots at \$1.50 per 100 additional

Variety	Select Bud	Price	
		Rooted Per 100	Cuttings 1000
APRICOT QUEEN—Orange bronze. Matures Oct. 25th.....	Sept. 5	\$3.00	\$27.50
BRONZE CHADWICK—Bronze. Matures Nov. 20-30.....	Terminal	3.00	27.50
DETROIT NEWS—Excellent bronze. Matures Oct. 25.....	Aug. 30	3.00	27.50
GLADYS PEARSON—Popular late bronze. Matures Nov. 20-30.....	Sept. 30	3.00	27.50
HILDA BERGEN—New popular bronze. Matures Oct. 25.....	Sept. 10	3.00	27.50
IMOGENE—Orange with golden reverse. Matures Oct. 25.....	Aug. 15	3.00	27.50
INDIANOLA—Light bronze. Matures Oct. 10.....	Aug. 25	3.00	27.50
KEYSTONE—Good large bronze. Matures Oct. 20.....	Aug. 30	3.00	27.50
MRS. A. J. STAHELIN—Bronze with reverse petals yellow. Matures Nov. 15.....	Terminal	3.00	27.50
OAKLEAF—Dark bronze, late. Matures Nov. 20-30.....	Sept. 30	3.00	27.50

**POMPON CHRYSANTHEMUMS**

Plants from 2¼-in. pots at \$1.50 per 100 additional

Variety	Matures	Price	
		Rooted Per 100	Cuttings 1000
BIG BABY—Yellow. Button Type.....	Nov. 20-30	\$3.00	\$27.50
BRIGHT EYES—Blush white Button.....	Nov. 1	3.00	27.50
BRISTOLITE—Rich Indian yellow, cadmium yellow in center. Large Pompon Type.....	Nov. 20	3.00	27.50
BRONZE DOTY—Large terra cotta bronze. Large Pompon Type*.....	Nov. 1	3.00	27.50
BRONZE USONA—Bronzy orange. Large Pompon Type.....	Nov. 20-30	3.00	27.50
BUTTERCUP—Golden yellow. Large Pompon type.....	Dec. 5	4.00	35.00
CHRISTMAS GOLD—Bright late yellow. Small Button Type.....	Dec. 1	3.00	27.50
CORA PECK BUHL—Intense shade of yellow. Large Pompon Type.....	Oct. 25	3.00	27.50
DAINTY MAID—White with pink tint, excellent shipper. Small Button Type.....	Nov. 1	3.00	27.50
DOROTHY TURNER—Excellent bronze and old gold. Large Pompon Type.....	Nov. 25	3.00	27.50
ETHEL—Bright miniature red Pompon. Button Type.....	Oct. 20	3.00	27.50
FEZ—Chestnut crimson. Small Pompon Type.....	Nov. 10	4.00	35.00
FIREBIRD—Red bronze. Large Pompon Type.....	Oct. 25	3.00	27.50
FRANK WILCOX Syn. Mrs. Beu or Souv. d'Or—Golden bronze. Large Pompon Type.....	Nov. 25	3.00	27.50
GOLDEN SCEPTRE—Bright yellow. Large Pompon Type.....	Nov. 25	3.00	27.50
GOLD COIN—Bright yellow. Large Pompon Type*.....	Dec. 1	3.00	27.50
GOLD MINE—Very bright yellow. Button Type.....	Oct. 25	3.00	27.50
HILDA CANNING—Reddish bronze. Button Type.....	Nov. 15	3.00	27.50
IRENE—Pure white. Button Type.....	Oct. 20	3.00	27.50
IRENE RICH—Pink. Large Pompon Type*.....	Nov. 1	3.00	27.50

## POMPON CHRYSANTHEMUMS—(Continued)

Variety	Matures	Price	
		Rooted Per 100	Cuttings 1000
JEWEL—Bright pink, good keeper. Large Button Type.....	Oct. 1-15	3.00	27.50
JOAN WELLS—Straw color with bronze center, novelty. Large Button Type .....	Oct. 25	3.00	27.50
LEGAL TENDER—Bronze and gold, extra fine. Large Pompon Type.....	Nov. 20	3.00	27.50
LEILEH—Rose pink. Large Pompon Type.....	Oct. 15	3.00	27.50
LILAC—Bright lavender pink. Large Pompon Type.....	Oct. 15	3.00	27.50
LILIAN DOTY—Large flowers of shell pink. Large Pompon Type*.....	Oct. 25	3.00	27.50
MUSKOKA—Large golden bronze, good keeper. Large Pompon Type*.....	Nov. 10	3.00	27.50
NORINE—Deep yellow. Large Button Type.....	Nov. 20	3.00	27.50
NOVEMBER BRONZE—Orange bronze. Large Pompon Type.....	Nov. 10	3.00	27.50
OLIVIA—Good late pompon. Large Pompon Type.....	Nov. 20	3.00	27.50
PINK CAPRICE—Good pink flower. Large Pompon Type.....	Nov. 5	3.00	27.50
PINK DOT—White with bright pink center. Large Button Type.....	Oct. 25	3.00	27.50
RED DOTY—Silvery wine red. Large Pompon Type*.....	Oct. 25	3.00	27.50
RODELL—Early golden yellow. Button Type.....	Oct. 20	3.00	27.50
ROSE CHARM—Bright rose pink. Large Pompon Type*.....	Oct. 25	3.00	27.50
SEA-GULL—Pure white. Large Pompon Type.....	Nov. 1	3.00	27.50
SILVER BALL—Pure white. Large Pompon.....	Oct. 12	3.00	27.50
USONA—Bright pink. Large Pompon Type.....	Nov. 20	3.00	27.50
UVALDA—Large early white, faint pink on opening. Large Pompon Type	Oct. 10	3.00	27.50
WHITE CAPRICE—White. Large Pompon Type.....	Nov. 1-15	3.00	27.50
WHITE DOTY—Large pure white. Large Pompon Type*.....	Nov. 1	3.00	27.50
WHITE JEWELL—Blush white. Large Button.....	Oct. 1	4.00	35.00
WHITE WINGS—Excellent early white. Large Pompon Type.....	Oct. 10	3.00	27.50
WHITE YULETIDE—Pure white. Large Pompon Type.....	Dec. 1	3.00	27.50
YELLOW BIRD—Attractive yellow. Large Pompon Type.....	Nov. 20	3.00	27.50
YELLOW CAPRICE—Yellow. Large Pompon Type.....	Nov. 1	3.00	27.50
YELLOW DOT—Very small bright yellow flowers. Small Button Type.....	Nov. 10	3.00	27.50
YELLOW MUSKOKA—Large bronzy yellow flowers. Large Pompon Type	Nov. 10	3.00	27.50
YELLOW YULETIDE—Large golden yellow. Large Pompon Type.....	Dec. 1	3.00	27.50

\*Varieties suitable for disbudding.

## ANEMONE CHRYSANTHEMUMS

Plants from 2¼-in. pots at \$1.50 per 100 additional

Variety	Matures	Price	
		Rooted Per 100	Cuttings 1000
BRONZE VOLUNTEER—Rich bronze. Matures Nov. 20-30.....		\$3.00	\$27.50
CO-ED—Soft pink with tinge of yellow. Matures Nov. 10.....		3.00	27.50
GARZA SUPREME—White. Matures Dec.....		3.00	27.50
MARITZA—Bright yellow, full high cushion, best disbudded. Matures Nov. 20-30.....		3.00	27.50
NORMA—Orchid pink petals, with golden pink cushion, best disbudded. Matures Nov. 15.....		3.00	27.50
OHIO STATE—Yellow, excellent for pots. Matures Nov. 1.....		3.00	27.50
RED ROLINDA—Red sport of Rolinda. Nov. 20-30.....		4.00	35.00
ROLANDA—Orange bronze, matures Nov. 20-30.....		3.00	27.50
SUZANNE MILLER—Bright yellow, best disbudded, sport of Norma. Matures Nov. 15.		3.00	27.50
TITAN—Scarlet crimson with bronzy red cushion, best disbudded. Matures Nov. 5....		3.00	27.50
VOLUNTEER—Yellow. Matures Nov. 20-30.....		3.00	27.50
WHITE NORMA—White sport of Norma. Nov. 1.....		3.00	27.50
YELLOW GARZA SUPREME—Yellow. Matures Dec.....		3.00	27.50

### Chrysanthemum Varieties Suitable for Pot Culture

Bronze Doty  
Ethel  
Gold Lode  
Lillian Doty

Melba  
Merry Christmas  
Ohio State  
Pink Caprice

Pink Cushion  
White Caprice  
Yellow Caprice  
Yellow Dot

## IMPORTANT ANNOUNCEMENT

Our Chrysanthemum stock plants are field grown. We can therefore guarantee our cuttings to have greater vitality than those from bench grown plants. We can further guarantee our plants to be free from midge.

**SINGLE CHRYSANTHEMUMS**

Plants from 2¼-in. pots at \$1.50 per 100 additional

Variety	Price	
	Rooted Per 100	Cuttings 1000
BRONZE BUCKINGHAM—Bronze. Matures Nov. 5.....	\$3.00	\$27.50
ELLA GILLIFORD—Pink. Matures Oct. 15.....	3.00	27.50
MELBA—Reddish bronze. Matures Nov. 5.....	3.00	27.50
PINK BUCKINGHAM—Pink. Matures Nov. 5.....	3.00	27.50
SALMON GILLIFORD—Salmon, sport of Ella Gilliford. Matures Oct. 15.....	3.00	27.50
VALENCIA—Orchid pink. Matures Nov. 30.....	3.00	27.50

**EARLY HARDY CHRYSANTHEMUMS**

The majority of Chrysanthemums are hardy south of the Ohio River, and many are hardy further north. For outdoor planting, Chrysanthemums must flower before killing frost to be of value. These varieties will flower from the last of August until late October.

Plants from 2¼-in. pots at \$1.50 per 100 additional

Variety	Price	
	Rooted Per 100	Cuttings 1000
ADIRONDA—Small, compact, bronze flowers.....	\$4.00	\$35.00
ALICE HOWELL—Orange Bronze .....	4.00	35.00
AMELIA (same as Pink Cushion)—Bright pink, very free flowering.....	4.00	35.00
AUNT MARY—Fiery terra cotta or rosy crimson.....	4.00	35.00
AUTUMN GLOW—Rosy crimson, large.....	4.00	35.00
CAVALIER—Vermilion red, large single, excellent.....	4.00	35.00
CRIMSON SPLENDOR—Magnificent large crimson.....	4.00	35.00
DAYBREAK—Large shell pink. A beauty.....	4.00	35.00
FIELD OF GOLD—Golden sport of Field of Snow.....	4.00	35.00
FIELD OF SNOW—Pure white, profuse bloomer.....	4.00	35.00
FRED PEELE—Yellow button.....	4.00	35.00
GOLDEN QUEEN—Large yellow.....	4.00	35.00
GRANNY SCOVILLE—Warm coral bronze, large flowers.....	4.00	35.00
GRENADIER—Bright crimson red. ....	4.00	35.00
HARVEST HOME—Beautiful bronze.....	4.00	35.00
INDIAN—Copper red .....	4.00	35.00
INNOCENCE—Pure white changing to soft pink, profuse bloomer.....	4.00	35.00
JEAN CUMMING—Beautiful pure white, large.....	4.00	35.00
JEAN TREADWAY—Pink with deep center.....	4.00	35.00
L'ARGENTUILLAIS—Bronze tipped with yellow.....	4.00	35.00
LITTLE BOB—Bronze red, button.....	4.00	35.00
MARIE ANTOINETTE—Deep pink.....	4.00	35.00
MRS. F. H. BERGEN—Pale pink with deep pink center.....	4.00	35.00
MRS. H. HARRISON—Full double, creamy pink.....	4.00	35.00
MURILLO—Pink, best of its color.....	4.00	35.00
OLD LAVENDER—Lavender .....	4.00	35.00
PHILADELPHIA—Lavender pink .....	4.00	35.00
PINK CUSHION—Bright pink, plant covered with flowers.....	4.00	35.00
VIVID—Large rosy crimson.....	4.00	35.00
WINETKA—Pure white, free flowering.....	4.00	35.00

**New Winter Hardy Hybrid Korean Chrysanthemums**

These new creations are especially fine for cold climates where the ordinary chrysanthemum winter-kills. They are hardier, most attractive with their lovely new pastel shades, and early flowering. The Korean Hybrids are undoubtedly the greatest advance made in years in chrysanthemums. 2¼ inch pots, Doz. \$1.20; Per 100, \$8.00.

**APOLLO**—Superb autumn color—a sparkling combination of bronze, red, and gold suffused with glowing salmon. The single flowers, 2 inches across, are produced in immense sprays. Long flowering period. Height, 2½ feet.

**CERES**—A lovely combination of old-gold, cham- ois-yellow, and soft coppery bronze. The ma- ture flower petals appear as if dusted with gold. Handsome sturdy plant producing a quantity of nicely formed single flowers in branching sprays. Height 2½ feet.

**DAPHNE**—Altogether a new shade of pink to the chrysanthemum. An exquisite blending of Daphne- pink, with an underlying sheen of lilac rose, en- hanced with prominent golden stamens in the center. The single flowers, 3½ inches in diameter, carried in graceful sprays, are especially frost-

resistant. Fine, healthy-growing habit. Height, 2½ feet.

**DIANA**—A new color-note for the garden, Chatenay- rose-pink, mingled with lilac rose and soft salmon, the tones of which vary with the degree of light. The triple rays of petals give an appearance of fullness that is none the less dainty. Height, 2½ feet.

**MARS**—Deep amaranth-red, changing to wine red, overlaid with a velvety sheen. A distinct and striking color effect. Height, 2½ feet.

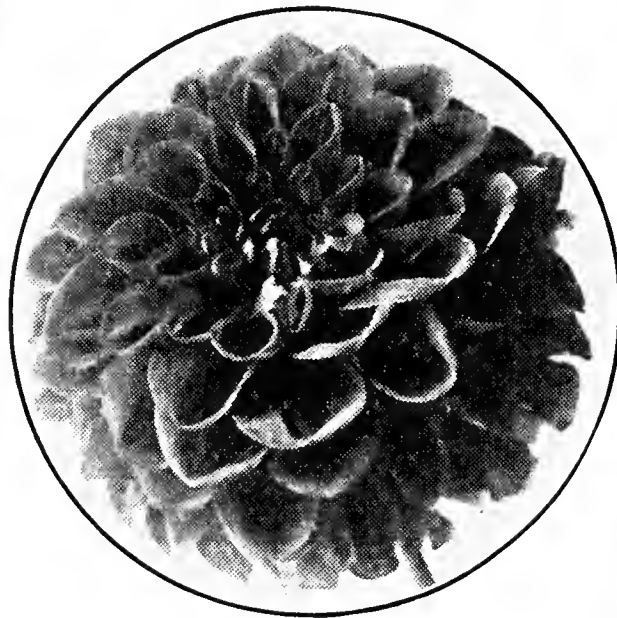
**MERCURY**—(Plant Patent No. 58)—The 3-inch, single flowers open bronze-red and change to coppery bronze as they mature, a charming effect in the garden. The graceful sprays when cut keep two to three weeks. Height, 2 feet.

# The New and Better Dahlias

## Plump Roots and Started Green Plants from Pots

**No Flower** has been so materially improved in the past ten years as the Dahlia. To compare the new varieties with flowers ten to thirteen inches across with the older types is a revelation to the average grower. Florists who are not growing the new and better varieties are neglecting a big opportunity for increased profits.

We are growing a very complete collection of the new varieties, selecting each year only those which show decided commercial merit and improvement. Each one of the new varieties listed is an improvement over anything yet introduced. Compare our prices with those of reliable growers—and place your order today.



**ROOTS MAY BE SHIPPED IMMEDIATELY. GREEN PLANTS MAY BE SHIPPED APRIL 1st AND LATER.**

	ROOTS		PLANTS	
	Per 12	Per 100	Per 12	Per 100
<b>AMBASSADOR</b> —(Cactus)—One of the finest dahlias ever grown. A giant flower of soft yellow, salmon and pink. Erect strong stems.....	\$3.25	\$25.00	\$2.00	\$15.00
<b>BUCKEYE PEACH</b> —(Decorative)—One of the most gorgeous of all dahlias. Combination of yellow, salmon and pink, creating beauty beyond description. This is one variety you must have.....	2.65	20.00	1.65	12.00
<b>COUNTESS OF LONSDALE</b> —(Cactus)—For perfection of bloom, erectness of stem, abundance of flowers, this variety has never yet been equalled. On several of the plants we have counted over 150 perfect blooms on one plant. The color is rich salmon-pink, tinted apricot.....	1.50	10.00	.....	.....
<b>DOROTHY STONE</b> —(Decorative)—Selected by the popular young actress, Miss Dorothy Stone, at the New York Show to bear her name. This magnificent Dahlia has been the talk of the show at all the Eastern exhibitions this year. It is a huge decorative of true deep pink shade, brighter and richer than "Kathleen Norris" and the substance is heavier. This is a distinct and splendid exhibition companion to Kathleen Norris. Very full center, petals thick and evenly placed, profuse bloomer, deep green leathery foliage, medium to tall habit of growth, stem upright and strong, flowers held well above foliage. In fact, it is everything a good Dahlia should be for exhibition.....	4.00	30.00	2.00	15.00
<b>DWIGHT A. MORROW</b> —(Informal Decorative)—This is a gigantic velvety red. Its size, form and richness of color make this Dahlia a winner whenever shown .....	5.00	40.00	2.65	20.00
<b>EDWARD THOMAS BEDFORD</b> —(Formal Decorative)—This reliable dahlia produces mammoth flowers on the best of stems. Bushes are strong, uniformly vigorous. Flowers deep rich purple.....	2.00	15.00	.....	.....

## DAHLIAS (Continued)

	ROOTS		PLANTS	
	Per 12	Per 100	Per 12	Per 100
<b>ELITE GLORY</b> —(Decorative)—Very large blooms of a glossy brilliant red color. A truly marvelous flower of outstanding size and form.....	\$3.25	\$25.00	\$2.00	\$15.00
<b>FT. MONMOUTH</b> —(Decorative)—A glorious new dahlia with flowers of mighty size. In color rich deep maroon shaded bluish violet at the tip of each petal. One of the best.....	2.65	20.00	1.65	12.00
<b>FRANKLIN D. ROOSEVELT</b> —This outstanding new Decorative Dahlia is without question one of the finest garden varieties ever introduced. We have been observing this variety for the past two years and can truthfully say that it is worthy of bearing its illustrious name. The abundantly produced flowers are of large size and of a beautiful ruby red shade. One of the first Dahlias to open and the flowers continue until frost. By all means, plant this fine variety.....	3.25	25.00	2.00	15.00
<b>GLADYS SHERWOOD (Colossal Cactus)</b> —Marvelous blooms over 10 inches in diameter. Snow white. Profuse blooming.....	2.00	15.00	1.20	8.00
<b>GOLDEN ECLIPSE (Decorative)</b> —One of the finest golden yellow dahlias introduced to date. The large flowers are held erect by tall, sturdy stems. You will enjoy Golden Eclipse.....	5.00	40.00	2.65	20.00
<b>GOLDEN GOBLIN (Decorative)</b> —A grand, large flowered variety of rich old gold color. One of the best for exhibition purposes and garden display.	2.65	20.00	1.35	10.00
<b>HILLCREST MANDARIN (Decorative)</b> —One of the most distinctly beautiful of all dahlias. A blending of red and gold that creates interest wherever grown .....	2.00	15.00		
<b>JANE COWL (Decorative)</b> —No Dahlia has ever been in such great demand. Ideal bush—fairly tall, with vigorous dark green, leather-thick foliage, straight and strong yet not clumsy; monster blooms of glistening bronzy buff and salmon shades. Jane Cowl is held on the stem just as it should be—looking at you and slightly up. The flowers are immense, of the full petaled decorative type, with just enough twist to the broad petals to add the touch of refinement. It has been called the world's "most perfect Dahlia" .....	1.75	12.00		
<b>JEAN TRIMBEE (Semi Cactus)</b> —The beautiful royal purple flowers of this Dahlia are borne on exceptionally strong stems. The flowers are large and massive and yet are artistic with long revolute petals that curl and twist .....	5.00	40.00	2.65	20.00
<b>JERSEY'S BEAUTY (Decorative)</b> —The one most beautiful pure pink dahlia. No other variety can compare with it in perfect form, gorgeous color, stiff stems and keeping quality. Highest rating of any dahlia by American Dahlia Society .....	1.50	10.00		
<b>JERSEY'S GLORY (Decorative)</b> —A magnificent bloom both in color and form. Flowers sparkling orange intermingled with yellow. One of America's most popular dahlias.....	2.65	20.00	1.65	12.00
<b>JUDGE MAREAN (Decorative)</b> —One of the earliest and most dependable dahlias. A beautiful blending of golden yellow and orange. A dahlia you will admire greatly.....	1.50	10.00		
<b>KATHLEEN NORRIS (Decorative)</b> —A bloom of gigantic proportions. True rose-pink in color later deepening to mallow pink. It was awarded first prize as the best flower in four great Eastern shows in addition to innumerable other awards as an undisseminted seedling. We cannot recommend Kathleen Norris too highly.....	2.00	15.00	1.20	8.00

**DAHLIAS (Continued)**

	ROOTS		PLANTS	
	Per 12	Per 100	Per 12	Per 100
<b>KEMP'S VIOLET WONDER</b> —(Decorative)—The best violet colored Dahlia to date. The predominating color of this great Dahlia is a rich naphthaline violet, with an underlying tone of royal purple, with bluish lavender reverse. Flowers are nearly as perfect in form as possible; of true decorative type, and of massive proportions, attaining to a diameter of ten inches and over, and to a depth of six to seven inches. The flowers are borne on stiff stems, ten to fourteen inches above the foliage. The variety has wonderful keeping qualities. One of the most outstanding Dahlias yet introduced .....	\$5.00	\$40.00	\$2.65	\$20.00
<b>KENTUCKY</b> —(Decorative)—A sport of Jersey's Beauty with the same splendid habits. The large blooms are light salmon orange shading to deeper orange. We highly recommend it.....	2.00	15.00	.....	.....
<b>KISS ME</b> —(Cactus)—The most unusual and strikingly different dahlia in existence. Free-blooming, long stemmed, flowers of red and white. Fine for cutting.....	1.50	10.00	.....	.....
<b>MRS. I. deVER WARNER</b> —(Decorative)—A superb shade of deep orchid pink. Color very popular. One of the really dependable dahlias that may be expected to give satisfaction each year.....	1.50	10.00	.....	.....
<b>PATRICK O'MARA</b> —(Decorative)—Large flowers of rich chrome yellow with salmon red suffusion. Flowers of good size and form.....	1.50	10.00	.....	.....
<b>POLAR BEAR</b> —(Decorative)—Here is the fine white cut flower variety that is so popular. Flowers of pure white. Stems sturdy and long.....	3.25	25.00	2.00	15.00
<b>POT OF GOLD</b> —(Decorative)—Fine clear yellow with a gold sheen. Large flowers with wavy petals. The blooms are on strong stiff stems, keeping well when cut.....	2.65	20.00	1.65	12.00
<b>PRIDE OF CALIFORNIA</b> —(Decorative)—Huge flowers of crimson red with dark full center. Excellent for cutting. Remarkable keeping quality. You'll admire this dahlia.....	1.50	10.00	.....	.....
<b>QUEEN OF THE GARDEN BEAUTIFUL</b> —(Decorative)—This distinctive and interesting Dahlia originated in the famous garden of San Quentin Prison. An immense primrose yellow, facing upward on the stem. The flowers are massive. Strong in growth.....	3.25	25.00	2.00	15.00
<b>SAGAMORE</b> —(Decorative)—The leading cut flower yellow Dahlia. Is undoubtedly one of the finest golden yellows; the flowers are held on strong stems over a robust plant. Of great substance and excellent keeping qualities .....	1.75	12.00	.....	.....
<b>SPRINGFIELD</b> —(Cactus)—A Dahlia of our own introduction. It is identical with Countess of Lonsdale except in two essentials. It has a darker stem and the flowers instead of being a salmon-pink as in Lonsdale, in Springfield are a rich amaranthine red. Its beauty cannot be described. No Dahlia blooms freer, no Dahlia is as pretty as Springfield. It lasts longer than any other Dahlia we know.....	1.50	10.00	.....	.....
<b>THOMAS A. EDISON</b> —(Decorative)—Large deep royal purple; a cut flower variety of high quality .....	4.00	30.00	2.00	15.00
<b>WHITE WONDER</b> —(Informal Decorative)—An introduction of 1933 that is rapidly becoming popular. It is pure white with long pointed petals that are somewhat twisted, and curved, giving the flower a fluffy appearance. A strong grower that branches from the ground and produces plenty of roots .....	3.25	25.00	2.00	15.00



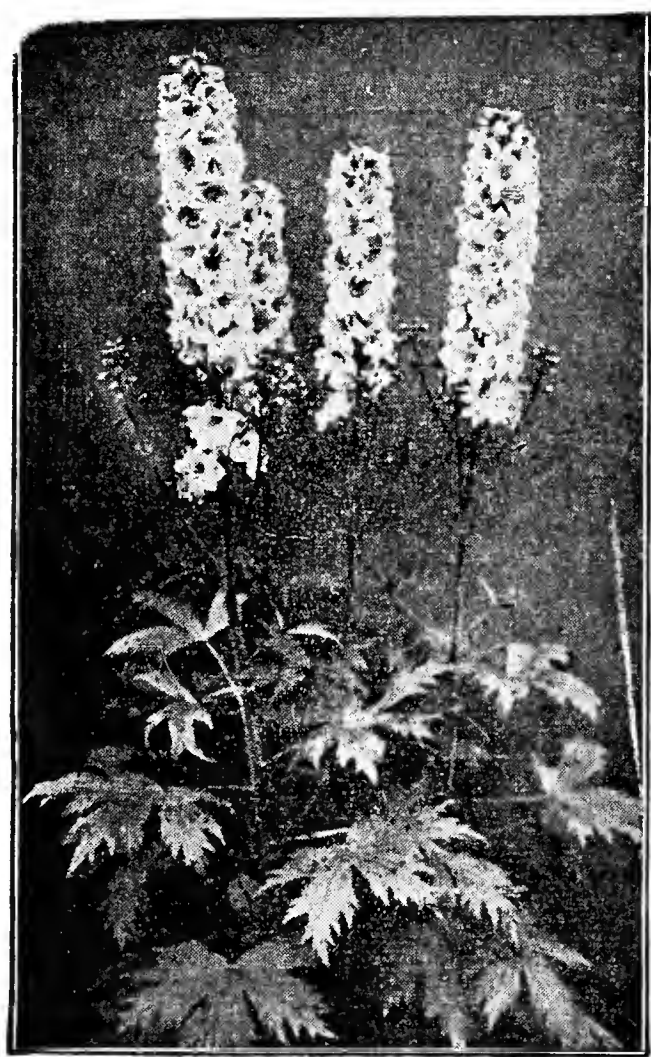
# HARDY PERENNIAL PLANTS

We are giving especial attention to our Hardy Perennial Department. Our stock is exceptionally large this year, one million plants being grown especially for the shipping trade. The majority of the perennials here offered are field grown clumps.

*Suitable for Rock Gardens	Per 12	Per 100		Per 12	Per 100
<b>ACHILLEA (Milfoil or Yarrow)</b> PTARMICA, THE PEARL—Pure white double flowers all summer. Prized for cutting.....	\$1.00	\$7.00			
<b>AETHIONEMA</b> GRANDIFLORA—Shrub-like perennial, producing numerous dense spikes of rose-colored flowers. 1½ feet.....	1.20	8.00			
*PERSICUM—Hardy rock plants, glaucous blue foliage; pink blossoms.....	1.20	8.00			
<b>AGROSTEMMA</b> CORONARIA—Silvery foliage, rosy-red blossoms.	1.00	7.00			
<b>ALYSSUM (Rock Madwort)</b> *ARGENTEUM—Dense growth. Leaves silvery beneath, flowers yellow in clustered heads. Blooms all summer. 15 inches.....	1.00	7.00			
*SAXATILE COMPACTUM—Broad masses of bright yellow flowers in early spring. An excellent plant for the rockery or front of borders.....	1.00	7.00			
<b>ANCHUSA</b> ITALICA—Border plant, gentian blue.....	1.00	7.00			
<b>AQUILEGIA (Columbine)</b> MRS. SCOTT ELLIOTT HYBRIDS—We offer select plants of this, the finest long-spurred strain ever originated.....	1.20	8.00			
<b>ARABIS (Rock Cress)</b> ALPINA—Pure white flowers produced in dense masses. A splendid plant for rock gardens.....	1.00	7.00			
<b>*ARENARIA</b> MONTANA—Very desirable evergreen trailing plant, forming a dense carpet of foliage and covered with large white flowers in spring. Excellent for the rockery.....	1.20	8.00			
<b>*ARMERIA HYBRIDS</b> Attractive dwarf plants; pink shades.....	1.20	8.00			
<b>ARTEMISIA SILVER KING</b> A Plant of Rare Beauty for Landscape or Cutting For landscape effect from early summer until late winter, Artemisia Silver King is a most outstanding plant. For the cut flower trade the foliage of Artemisia Silver King is one of the greatest values as a filler for sprays or designs. It matures early in the summer and quickly hardens to a state when it can be cut and used without moisture. The foliage does not wilt or shatter after hardening off and can be carried dry indefinitely without losing its color. It thrives in ordinary soil, growing to a height of about three feet in almost perfect symmetrical form. The stems are well branched and thickly covered with bright silver covered foliage, but these quickly divide into a delicate lacy shape with the appearance of small flower buds all over the branches.....	1.00	7.00			
<b>ASTER (Michaelmas Daisy)</b> ABENDROTHER—Rosy-red flowers.....	1.00	7.00			
CLIMAX—Large spikes, lavender-blue.....	1.20	8.00			
DELICATE—Delicate lilac rose.....	1.00	7.00			
EMILE THOURY—Light ageratum blue.....	1.00	7.00			
HIGHLAND MORN—Delicate light blue.....	1.00	7.00			
MAGGIE PERRY—Large flowers of soft mauve.....	1.00	7.00			
MONS—Distinct reddish violet.....	1.00	7.00			
PERRY'S BLUE—Fine blue of medium height.....	1.00	7.00			
ROYAL BLUE—Large rich purplish blue.....	1.00	7.00			
SAM BANHAM—Large, early pure white.....	1.00	7.00			
ST. EGWIN—Beautiful light pink.....	1.00	7.00			
<b>HARDY PERENNIAL FLOWERING MIXED</b> These hybrids produce flowers of many forms and colors.....	1.00	7.00			
			<b>NEW BABY'S BREATH ASTER</b> A new introduction that is rapidly becoming very popular for the garden and cut flower planting. It is distinctive in growth, making fine, round clumps 15 to 18 inches high. The foliage is dark green. Its flowering period, which is exceptionally long, begins about the first of August. As an alternative for Gypsophila for filling in cut flower work, it is being extensively used. It is also considered one of the best Rock Garden and perennial plants introduced in recent years. The flowers are pure white in color, and about one-half to one inch in diameter. Strong plants that will flower first season.....	\$1.50	\$10.00
			<b>AUBRIETIA (Rainbow Wall Cress)</b> One of the most beautiful dwarf border plants producing a profusion of flowers in many colors for several weeks.....	1.00	7.00
			<b>BOLTONIA (False Chamomile)</b> ASTEROIDES—Among the showiest hardy plants with large single Aster-like flowers. Pure white, 6 to 7 feet.....	1.00	7.00
			LATISQUAMA—A very showy florific aster-like plant producing a great profusion of flowers in the summer and fall months.....	1.00	7.00
			<b>CAMPANULA (CANTERBURY BELLS)</b> CARPATICA (Carpathian Harebell)—A pretty species growing in compact tufts not exceeding eight inches high. Flowers clear blue, held erect on wiry stems. July to October.....	1.50	10.00
			CARPATICA ALBA—A pure white form of the preceding.....	1.50	10.00
			PERSICIFOLIA GRANDIFLORA COERULEA—Large bright blue flowers make a very striking effect. 2 feet.....	1.50	10.00
			MEDIUM WHITE.....	1.00	7.00
			MEDIUM PINK.....	1.00	7.00
			MEDIUM BLUE.....	1.00	7.00
			<b>CARNATION</b> CRIMSON KING—The best hardy, largest flowering carnation ever introduced. Foliage dark olive green. The stout stems support flowers in great profusion. The blooms are richly clove scented. Crimson King flowers from early June until heavy frost. It is a valuable florist's plant.....	1.65	12.00
			<b>CENTAUREA (HARDHEADS OR KNAPWEED)</b> MACROCEPHALA—Large thistle-like golden yellow flowers; useful for cutting and showy in borders July and August. 3½ feet.....	1.00	7.00
			MONTANA—(Perennial Corn Flower)—Large violet blue flowers; 2 feet.....	1.00	7.00
			MONTANA ALBA—White.....	1.00	7.00
			<b>*CERASTIUM (Snow-in-Summer)</b> TOMENTOSUM—Low growing rock or border plant having silvery white foliage and producing an abundance of snow-white flowers.....	1.00	7.00
			<b>CHRYSANTHEMUMS</b> (See pages 22 to 25)		
			<b>COREOPSIS</b> LANCEOLATA GRANDIFLORA—Two feet, June-October. Large orange-yellow flowers on long graceful stems. The best yellow cut flower perennial.....	1.00	7.00
			<b>DAISY (Hartje and Elder)</b>	0.75	5.00

# Hardy Perennials (Continued)

*Suitable for Rock Gardens	Per 12	Per 100
<b>SHASTA DAISY</b> (Chrysanthemum Maximum)		
ALASKA—Fine semi-double white.....	\$1.00	\$7.00
KING EDWARD—Large white flowers on stout stems .....	1.00	7.00
<b>DELPHINIUMS</b>		
BELLADONNA—The best blue cut flower. Light sky blue .....	1.00	7.00
BELLAMOSA—Dark blue .....	1.00	7.00
GOLD MEDAL HYBRIDS—Choice mixed English seed from selected named sorts; tall varieties.....	1.00	7.00
BLACKMORE AND LANGDON HYBRIDS—The finest strain of delphiniums ever introduced. We have tested all highly touted strains and find these hybrids to be absolutely superior.....	1.20	8.00



Delphinium Blackmore and Langdon

<b>DICENTRA (Bleeding Heart)</b>		
SPECTABILIS—Strong field-grown clumps.....	\$2.00	\$15.00
<b>DIGITALIS (Foxglove)</b>		
3-5 feet; one of the most popular of all perennials.		
WHITE .....	1.00	7.00
PURPLE .....	1.00	7.00
PINK .....	1.00	7.00
YELLOW .....	1.00	7.00
SPOTTED .....	1.00	7.00
GIANT SHIRLEY—Plants 5 to 6 feet tall. Flower heads often 3 feet long. Assorted colors.....	1.00	7.00
<b>EUPATORIUM</b>		
COELESTINUM (Hardy Ageratum)—A fine perennial closely resembling the Ageratum. Flowers lavender-blue, from August until frost. A fine florist's perennial.....	1.00	7.00
<b>GAILLARDIA (Blanket Flower)</b>		
GRANDIFLORA—Flowers variegated with shades of red and yellow. We consider the Gaillardia to be one of the most desirable plants in cultivation.....	1.00	7.00
THE DAZZLER—Intense red; one of the best for florist's use .....	1.50	10.00
MARY FERGUSON—A very valuable new variety. Large flowers, strong vigorous growth.....	1.50	10.00

*Suitable for Rock Gardens	Per 12	Per 100
<b>*DIANTHUS</b>		
<b>NEW EVER-BLOOMING HARDY PINK SPRINGFIELD BEAUTY</b>		
A new hardy ever-blooming hardy pink that is a most valuable addition to rock garden plants. The flowers, which are produced in abundance from early spring until late fall, are quite similar to the popular Gladys Cranfield, light pink with deeper colored eye. For the rockery, Springfield Beauty is superb.....		
	\$1.50	\$10.00
<b>DIANTHUS PRINCE BISMARCK (New)</b> —In constant luxurious bloom from early June till frozen in late November. The color is an even rose pink; the heavy clusters easily mistaken for polyantha Roses in prime. There could be no more delightful or practical dwarf border subject, the height averaging about one foot. Does well under rockery conditions, and make one of the most valuable pink flowering plants for that purpose.....		
	1.50	10.00
<b>CAESIUS</b> —(Cheddar Pink)—It is very compact in growth and makes a cushion of glaucous leaves from which in May, spring the sweet smelling, rose-colored flowers. It varies as much as from four to ten inches high. Very fine for the rock garden.....		
	1.50	10.00
<b>*DELTOIDES (Maiden Pink)</b> —A beautiful little rock or border plant bearing a profusion of small crimson flowers in June and July.....		
	1.00	7.00
<b>*BARBATUS (Sweet William)</b> —The old fashioned favorite.		
Newport Pink—Salmon-rose.....		
	1.00	7.00
Holborn Glory—White with distinct eyes.....		
	1.00	7.00
Pink Beauty—Salmon-pink .....		
	1.00	7.00
Maroon Beauty—Maroon .....		
	1.00	7.00
White Beauty .....		
	1.00	7.00
<b>*HARDY SCOTCH PINKS</b> —The old time favorites:		
Pink .....		
	0.85	6.00
Rose .....		
	0.85	6.00
White, with purple eye.....		
	0.85	6.00
Her Majesty—Pure white.....		
	0.85	6.00
Gladys Cranfield—Single light pink with crimson eye .....		
	1.00	7.00
<b>*ALWOODI, MIXED</b> .....		
	1.20	8.00
<b>GYPSOPHILA (Baby's Breath)</b>		
<b>PANICULATA</b> —2-3 feet. July-August. Small flowers on branched stem; so thick as to give the plant a white lace-like effect.....		
	1.00	7.00
<b>BRISTOL FAIRY</b> .....		
	2.50	17.50
<b>REPENS</b> —A beautiful trailing plant for the rockery, with clouds of small white and pink flowers in July and August.....		
	1.00	7.00
<b>HELIANTHEMUM (Rock or Sun Rose)</b>		
<b>*MUTABILE</b> —Low growing evergreen plants which are covered from July to September with golden yellow flowers.....		
	1.00	7.00
<b>HELIANTHUS (Perennial Sunflower)</b>		
<b>PERENNIAL MIXED</b> —Should be planted in masses with shrubbery for a background. The color effects are marvelous. Invaluable for cutting .....		
	1.00	7.00
<b>HEMEROCALLIS (Day Lily)</b>		
<b>FLAVA</b> —(Lemon Lily)—Sweet scented, clear full yellow. 2½ feet. June. We offer strong field divisions .....		
	1.00	7.00
<b>*HEUCHERA</b>		
<b>SANGUINEA</b> —Flowers bright crimson; free blooming. Fine for rock gardens.....		
	1.50	10.00
<b>HIBISCUS (Mallow)</b>		
<b>MALLOW MARVELS</b> —We offer a fine selection of this popular perennial. Shrub-like plant with handsome green foliage bearing large bright flowers throughout the summer.		
Pink—Large pink flowers with maroon eye.....		
	1.00	7.00
Red—Flowers 6 inches across; dark red.....		
	1.00	7.00
Yellow—Very fine shade.....		
	1.00	7.00
Crimson Eye—Creamy white with crimson center .....		
	1.00	7.00
White .....		
	1.00	7.00

# Hardy Perennials (Continued)

*Suitable for Rock Gardens	Per 12	Per 100	*Suitable for Rock Gardens	Per 12	Per 100
<b>HOLLYHOCKS</b>			<b>PHYSOSTEGIA (False Dragonhead)</b>		
Vigorous flowering plants of the finest strain.	\$1.00	\$7.00	<b>VIRGINICA</b> —Dense bushes with spikes of delicate pink tubular flowers; 3 feet.....	\$1.00	\$7.00
<b>DOUBLE WHITE</b> .....	1.00	7.00	<b>VIRGINICA ALBA</b> —Same as above, but white.....	1.00	7.00
<b>DOUBLE YELLOW</b> .....	1.00	7.00	<b>PLUMBAGO (Leadwort)</b>		
<b>DOUBLE CRIMSON</b> .....	1.00	7.00	<b>*LARPENTAE</b> —One of the most desirable border and rock plants. Of dwarf, spreading habit, growing 6 to 8 inches high; covered with deep royal blue flowers during the summer and fall....	1.00	7.00
<b>DOUBE ROSE</b> .....	1.00	7.00	<b>PRIMULA (Hardy Primrose)</b>		
<b>DOUBLE SALMON</b> .....	1.00	7.00	<b>*VERIS HYBRIDS MIXED</b> —Various shades; quite hardy and of vigorous growth.....	1.00	7.00
<b>IBERIS (Hardy Candytuft)</b>			<b>RUDBECKIA (Coneflower)</b>		
<b>GIBALTARICA</b> —Very desirable dwarf plant with evergreen foliage, covered by dense heads of flowers early in spring, 8 inches.....	1.00	7.00	<b>PURPUREA (Giant Purple Coneflower)</b> —Reddish purple flowers with a very large, brown cone-shaped center. July to October. 3 feet.....	1.00	7.00
<b>*SEMPERVIRENS</b> —Very dwarf and covered with a sheet of white flowers.....	1.00	7.00	<b>SAGE (Holt's Mammoth)</b>		
<b>INULA</b>			A variety of unusual substance, strong flavor and superior quality .....		
<b>ENSIFOLIA</b> —Yellow, very free. 1-1½ feet. July and August .....	2.00	15.00	<b>SALVIA (Meadow Sage)</b>		
<b>LATHYRUS (Hardy Sweet Pea)</b>			<b>TURKESTANICA</b> —Extremely decorative, sweet-scented, silvery foliage and showy whorls of white flowers surrounded by pale pink. Blooms all summer .....		
Red, pink, white .....	1.00	7.00	1.50	10.00	
<b>LIATRIS (Blazing Star)</b>			<b>SEDUM (Stonecrop)</b>		
<b>PYCNOSTACHYA</b> —Blooms in mid-summer and produces long, narrow spikes of rich purple flowers. Attracts butterflies.....	1.00	7.00	The backbone of the American rock garden.		
<b>LINUM (Flax)</b>			<b>*ACRE (Golden Moss)</b> —Much used for covering graves. Foliage green; flowers bright yellow....		
<b>*PERENNE</b> —Very attractive, both in foliage and bloom. Flowers beautiful pale blue on slender, graceful stems.....	1.00	7.00	<b>*ALBUM</b> —Dwarf and spreading; thick, waxy, round foliage. White flowers. Excellent rock plant .....		
<b>HARDY LILIES</b>			1.00 7.00		
The Leading and Best Varieties for Forcing and Garden Planting			<b>ALTISSIMA HYBRIDUM</b> —One of the best. Medium dwarf. Flowers yellow.....		
<b>LILIUM AURATUM (The Gold Banded Lily of Japan)</b> —First size bulbs.....	1.75	12.00	<b>*FOSTERIANA</b> —Dwarf and spreading. Dark green leaves. A very excellent variety.....		
<b>LILIUM RUBRUM</b> —First size bulbs.....	2.00	15.00	<b>GLAUCUM</b> —A scarce, dwarf variety with silvery green foliage .....		
<b>LILIUM GIGANTEUM (The Easter Lily)</b> —First size bulbs .....	1.50	10.00	<b>MIDDENDORFFIANUM</b> —A choice variety. Narrow leaves on unbranched six inch crowded stems. Clusters of dark reddish rosettes appear for winter decoration.....		
<b>LILIUM REGALE (The Royal Lily)</b> —First size bulbs .....	1.20	8.00	<b>REFLEXUM</b> —Yellow, evergreen spreading foliage. 6 inches. June-July.....		
<b>LOBELIA</b>			<b>RUPESTRE</b> —6 inches. Fine leaves in whorls. Dense heads of yellow flowers.....		
<b>CARDINALIS (Cardinal Flower)</b> —Rich, fiery red flowers. Strong plants, often producing 10 to 12 spikes.....	1.00	7.00	<b>*SARMENTOSUM</b> —Beautiful dwarf variety for rockeries or border edgings. The best Sedum for filling seams between rocks in wall gardens. A rapid grower .....		
<b>LYCHNIS (Champion)</b>			<b>SPECTABILE</b> —One of the prettiest erect growing species, attaining a height of 18 inches, with broad, light green foliage and immense heads of handsome showy rose-colored flowers....		
<b>CHALCEDONICA (Jerusalem Cross)</b> —Vivid scarlet flowers; one of the brightest plants in the hardy border .....	1.00	7.00	<b>SPECTABILE BRILLIANT</b> —A rich colored form of Spectabile, being a bright amaranth red.....		
<b>*VISCARIA SPLENDENS</b> —A beautiful pink flowering perennial. June and July. 8 to 10 inches .....	1.20	8.00	<b>*SPURIUM</b> —A beautiful dwarf flowering form. July and August. 6 inches. Rosy crimson.....		
<b>MYOSOTIS</b>			1.00 7.00		
<b>*PALUSTRIS SEMPERFLORENS (Hardy Forget-Me-Not)</b> —Charming blue flowers with yellow eye; profuse bloomer. Likes moist location	1.00	7.00	<b>SEMPERVIVUM (Hen and Chickens)</b>		
<b>*OENOTHERA (Evening Primrose)</b>			<b>*GLOBIFERUM</b> —Rosettes 2 to 3 inches in diameter. Gray-green leaves, pale yellow flowers. 1 foot .....		
<b>MISSOURIENSIS</b> —10 inches. June to August. A low species with prostrate ascending branches, profuse bloomer. Solitary flowers often four inches across. Fine for the rock garden.....	1.50	10.00	<b>*TECTORUM</b> —Broad rosettes, the leaves having reddish brown tips. Flowers pale red. 1 foot....		
<b>PLATYCODON (Balloon Flower)</b>			1.00 7.00		
<b>MARIESII</b> —Deep blue flowers, dwarf. July to October .....	1.00	7.00	<b>STATICE (Great Sea Lavender)</b>		
<b>MARIESII ALBA</b> —White flowered form of the above .....	1.00	7.00	<b>DUMOSA (New)</b> —Valuable for grouping in rockery, making a fine display through July and August. Pure silvery grey flowers. Excellent and everlasting when cut. Height, 1½ feet.....		
<b>GRANDIFLORA</b> —Large blue flowers; for borders or rock gardens .....	1.00	7.00	<b>LATIFOLIA</b> —Dense branching plumes of deep blue flowers. If cut and dried, will last for months .....		

# Hardy Perennials (Continued)

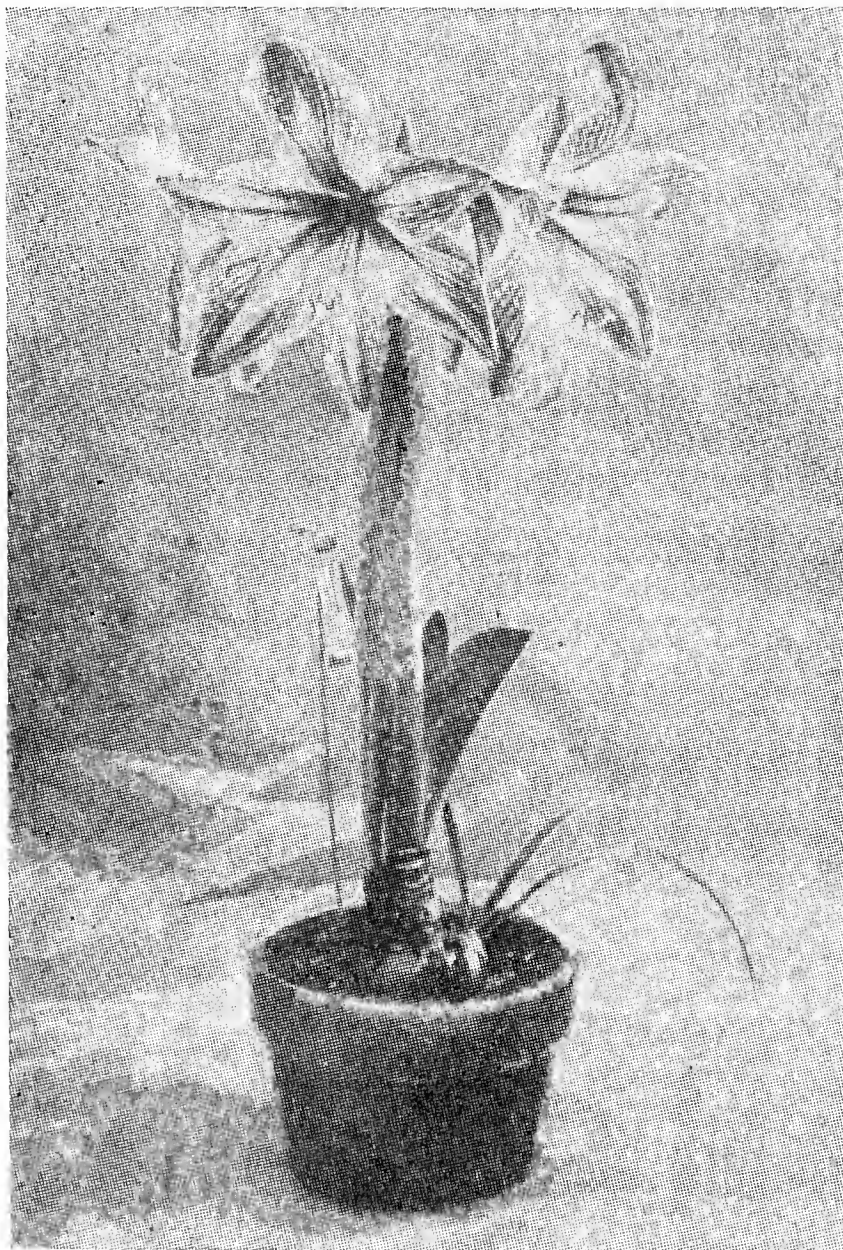
*Suitable for Rock Gardens	Per 12	Per 100	*Suitable for Rock Gardens	Per 12	Per 100
<b>TRITOMA (Red Hot Poker)</b> PFITZERI—We offer strong plants. Require protection unless in sheltered position. Rich orange-scarlet. Strong divisions.....	\$1.20	\$8.00	<b>VERONICA (Speedwell)</b> *INCANA—Deep blue flowers with silvery foliage. 1 foot. July-August..... SPICATA—2 feet. Long spikes of violet-blue flowers .....	\$1.50	\$10.00
<p>TRITOMA TOWERS OF GOLD is the most outstanding new hardy perennial to be introduced in 1938. See inside back cover.</p>			*VIOLA CORNUTA (Hardy Pansy) JERSEY GEM—Violet blue ..... PRINCESS OF WALES—Dark blue.....	1.00	7.00
<b>TUNICA</b> *SAXIFRAGA—Small pink flowers of the greatest profusion. Nice for the low border or for rock-work .....	1.00	7.00	<b>YUCCA (Adam's Needle)</b> FILAMENTOSA—Strong field-grown plants.....	1.00	7.00
<b>VALERINA (Garden Heliotrope)</b> RUBRUM—Handsome deep red flowers produced in June and July. 3 feet.....	1.50	10.00			

## Good & Reese Giant Flowering Amaryllis

### SPECIAL NOTICE

Good & Reese Amaryllis were awarded first prize at the National Flower Show in Cincinnati. We believe we have the finest Hybrid Amaryllis in America.

For the past eight years we have been selecting the best giant flowering Amaryllis from thousands of choice seedlings. These are now offered for the first time in blooming size bulbs of the most beautiful colorings.



Good & Reese Giant Amaryllis Hybrids

### GOOD'S WHITE GIANT

Only once in a decade is a really worthwhile new plant produced. In Good's White Giant, we believe we have a sensational new introduction that will become as popular as *Lilium Giganteum* when its merits become known. The flowers are enormous in size, often ten inches in diameter. In color, pure white without markings of any kind on the flowers. Frequently as many as six flowers are carried on a single stem. It is the most striking flower that can be grown. The stock is limited this year. \$1.00 each, \$7.50 per 12, \$50.00 per 100.

### Good and Reese Giant Hybrids

These selected hybrids are gigantic in size and exquisite in colorings. The colors range from white with thin markings of carmine, various shades of pink, to deep scarlet. Some are pure in color, others have beautiful markings and mottled throats. \$4.00 per 12, \$30.00 per 100.

### TWO OUTSTANDING GROUND COVERS

#### Euonymus Radicans Colorata

Being entirely evergreen, this plant is very attractive at all seasons. In winter, the foliage turns to a bronze red. This Euonymus is a very rapid grower, rooting at every joint, and this gives a uniform, even effect.

2 1/4 inch pots, \$10.00 per 100; \$85.00 per 1000.

#### Euonymus Radicans Variegata

One of the best evergreen ground-covers. The leaves are small and oval in shape, dark green in color with white edges.

2 1/4 inch pots, \$8.00 per 100; \$75.00 per 1000.

# AMERICA'S FINEST PEONIES

For spring planting we offer a comprehensive list of the better varieties. G. & R. Peony plantings are the most extensive in the country. We supply many of the leading florists and nurserymen with their supplies in this line—we guarantee our roots to be of the highest quality.

3-5 Eye Divisions (delivery until April 15th).

	Per 12	Per 100		Per 12	Per 100
<b>RED VARIETIES</b>					
<b>FELIX CROUSSE</b> —Rose type, mid-season. Considered the best red Peony for cut flowers. It is by far the most popular red Peony.....	\$2.00	\$15.00	<b>PRESIDENT TAFT</b> —A vigorous and profuse bloomer that is considered by some gardeners to be the best pink Peony. Color, bright hydrangea pink .....	\$3.25	\$25.00
<b>L'ECLATANTE</b> —Bomb type, mid-season. Flowers very double and full. Color deep velvety crimson. Considered one of the best cut flower Peonies .....	2.00	15.00	<b>SARAH BERNHARDT</b> —Flowers of remarkable size and color. Color apple-blossom pink. Fragrance very pleasing. We have the true variety .....	3.25	25.00
<b>MEISSONIER</b> —Bomb type, mid-season. A brilliant crimson Peony that is very effective for garden and cut flower planting. Stiff, wiry stems....	2.00	15.00	<b>WHITE VARIETIES</b>		
<b>RUBRA SUPERBA</b> —Rose type, very late. A magnificent variety of rich crimson. It is considered the best late red variety.....	2.00	15.00	<b>COURONNE D'OR</b> —Rose type, mid-season. The famous "Crown of Gold" Peony. Large flowers; color snow white. A very fine variety....	2.00	15.00
<b>PINK VARIETIES</b>			<b>FESTIVA MAXIMA</b> — Rose type, early. Although this variety is over seventy-five years old, it is still considered by most growers to be the best white Peony. One of the best for cutting.....	2.00	15.00
<b>ALBERT CROUSSE</b> —One of America's favorites. Its immense shell pink flowers are held erect on tall, wiry stems .....	2.00	15.00	<b>LA ROSIERE</b> —Large flowers in huge clusters of five flowers on each stem. The flowers consist of several rows of large, pure white petals, the center of the flower being a large disc of golden yellow stamens .....	2.00	15.00
<b>EDULIS SUPERBA</b> — Crown type, very early. One of the most valuable Peonies because of the fact that it is the first good pink Peony to flower. Bright rose pink.....	2.00	15.00	<b>LA TULIPE</b> —Rose type, midseason. Enormous globular flowers of delicate blush white, shading to ivory white. There are red tulip markings on the outside of the guard petals .....	2.00	15.00
<b>EUGENIE VERDIER</b> — A gorgeous Peony of delicate hydrangea pink. The flowers are extremely large. Midseason .....	2.00	15.00	<b>TWO FINE JAPANESE PEONIES</b>		
<b>MARGUERITE GERARD</b> —The best Peony for the South. The flowers are large, and of soft pink fading to creamy white as the flower ages..	2.00	15.00	<b>LIEUTENANT HOBSON</b> — A very beautiful variety with broad petals of rich rose pink and golden yellow center .....	3.25	25.00
<b>MME. EMILE GALLE</b> —One of the most beautiful of all Peonies. Color delicate sea shell pink. Midseason. Very showy and effective.....	2.00	15.00	<b>PETITE RENEE</b> —A very popular Peony with guard petals of carmine-purple, center petals of light magenta. Yellow center. Very showy .....	2.00	15.00
<b>MLLE. LEONIE CALOT</b> —Rose type, midseason. In our estimation, one of the most beautiful of all Peonies. The stems support flowers of delicate soft pink.....	2.00	15.00	<b>PEONIES IN MIXTURE</b>		
<b>MONS. JULES ELIE</b> —Bomb type, early. The most popular pink Peony. Color glossy lilac-pink. Considered the best cut flower variety.....	2.00	15.00	White .....	Per Doz. \$1.50	Per 100 \$10.00
			Pink .....	1.50	10.00
			Red .....	1.50	10.00

**FOR FALL SHIPMENT** we offer the most complete list of Peonies in America. Fifty acres in our nurseries are devoted to the production of Peonies, the largest planting in the world. Prospective buyers of Peonies should get in touch with us on fall requirements. Our special Peony catalog will be issued in July—we are in position to quote earlier, if desired.

GOOD & REESE, Inc.

No plant orders filled at these prices for less than 6 of a variety, except as noted. Less than 25 filled at dozen rates; 25 to 200 of a variety at hundred rates. Over 200 of a variety at thousand rates, where thousand rates are quoted.

# GERMAN IRIS

The great strides made in the improvement of Iris Germanica in recent years have made it possible for us to offer new varieties of exquisite beauty in colors and color combinations heretofore unattainable. We offer a comprehensive list of old and new favorites at remarkably reasonable prices. We invite the comparison of our roots with those of reliable growers.

"S" signifies standards or upright petals.

"F" the falls or drooping petals.

	Per 12	Per 100	Per 1000		Per 12	Per 100	Per 1000
AFTERGLOW — Soft lavender, shading to buff	\$1.00	\$5.00	\$40.00	KNYSNA — S. clear, deep yellow; F. velvety brown	\$2.50	\$	\$
AGNES — S. white, frilled lilac; F. white	1.25	7.50	-----	KOCHI — Flowers deep blackish purple	1.00	5.00	40.00
ALBERT VICTOR—S. soft blue; F. lavender	1.00	5.00	40.00	LA NEIGE—Flowers pure ivory white. Extra	2.00	-----	-----
ANNIE LESLIE—S. white, flushed rose; F. dahlia carmine	1.50	-----	-----	LENT. A. WILLIAMSON—S. Campanula violet; F. purple	4.00	20.00	-----
ARCHEVEQUE—S. deep purple violet; F. rich violet	1.25	7.50	-----	LEWIS TROWBRIDGE—S. bright violet; F. blue violet	2.50	-----	-----
ARMENIAN — S. heliotrope grey; F. violet	1.25	7.50	-----	LOHENGRIN — S. rose lavender; F. darker, white beard	1.00	5.00	40.00
ARNOLS — Rich bronzy purple, orange beard	1.00	5.00	40.00	LORELEY — S. pure yellow; F. plum violet	1.25	7.50	-----
AUREA — Empire yellow, orange beard. Self color	1.25	7.50	-----	MAJOR — S. hortense violet; F. pansy violet	1.50	10.00	-----
AUSTRALIS—S. deep lavender; F. soft blue	1.25	7.50	-----	MA MIE—S. and F. clear white, frilled violet blue	1.25	7.50	-----
AZURE—S. lavender blue; F. rich violet blue	1.50	10.00	-----	MANDRALISCAE — Beautiful lavender purple	2.00	-----	-----
BELCOLOR — Exquisite creamy white	1.25	7.50	-----	MARGARET MOOR — Deep lilac rose, fine	1.25	7.50	-----
BLUE JAY—S. clear blue; F. intense dark blue	1.50	-----	-----	MARSH MARIGOLD—S. golden yellow; F. purplish brown	1.25	7.50	-----
CAMELOT — S. and F. creamy white, edged violet	1.25	7.50	-----	MARY GARDEN—S. pale creamy yellow; F. veined maroon	1.25	7.50	-----
CANDELABRE—S. white, spotted violet; F. plum purple	1.00	5.00	40.00	MME. CHEREAU — White, with border of clear blue	1.00	5.00	40.00
CARTHUSIAN — Clear bluish lavender. Extra	1.25	7.50	-----	MME. CHERI — Ageratum-violet; suffused pink and yellow	1.25	7.50	-----
CECILE MINTURN—S. and F. soft catleya rose	2.50	-----	-----	MME. PACQUITE — Beautiful rosy claret self	1.00	5.00	40.00
CELESTE—S. and F. beautiful shade of soft violet	1.00	5.00	40.00	MONSIGNOR—S. rich violet; F. deep purple	1.00	5.00	40.00
CHASSEUR—S. and F. clear straw yellow. Very fine	2.50	-----	-----	MONSIGNOR BAYER—Very attractive reddish variety	1.25	7.50	-----
CHERUBIN — Pale violet, flushed buff. Orange beard	1.25	7.50	-----	MRS. COWLEY — S. coppery buff; F. rich rosy purple	1.25	7.50	-----
CLEMATIS—S. and F. light, clear violet. Fragrant	1.50	10.00	-----	MRS. H. DARWIN—Snow white with violet tracings	1.25	7.50	-----
CLIO—S. and F. rich lavender	2.50	-----	-----	MRS. W. E. FRYER—S. white, shaded mauve; F. purple	1.50	10.00	-----
CRUSADER—S. clear blue violet; F. darker violet	2.50	-----	-----	NEPTUNE—S. pale blue; F. rich purple blue	2.50	-----	-----
DAHLIA — S. creamy yellow; F. plum red	2.50	-----	-----	NIEBELUNGEN — S. deep olive buff; F. velvety violet	1.00	5.00	40.00
DALMARIUS—S. soft grey; F. darker, shaded violet brown	1.25	7.50	-----	NOKOMIS—S. lavender white; F. violet blue	1.00	5.00	40.00
DELICATISSIMA — S. lobelia blue; F. campanula pink	2.00	-----	-----	NUEE D'ORAGE—Graying blue, shaded bronze	1.25	7.50	-----
DEMURE — S. dull lilac rose; F. rich red	1.25	7.50	-----	PALLIDA DALMATICA — S. fine lavender; F. same shade	1.00	5.00	40.00
DOLPHIN—S. soft sky blue; F. violet with golden crest	1.25	7.50	-----	PERFECTION—S. light blue-lavender; F. deep purple	1.00	5.00	40.00
DORA LONGDON—S. lilac suffused yellow; F. red lilac	1.50	10.00	-----	POCAHONTAS — S. white, border blue; F. pure white	1.25	7.50	-----
DOROTHEA—Beautiful flowers of pale self blue	1.25	7.50	-----	PRINCESS VICTORIA LOUISE — S. clear yellow; F. plum	1.25	7.50	-----
FAIRY—S. and F. white, margined pale blue	1.00	5.00	40.00	PURPLE PRINCE — Intense, deep dark purple	1.00	5.00	40.00
GRACCHUS — F. crimson, reticulated white	1.00	5.00	40.00	QUAKER LADY—S. smoky lavender; F. blue and gold	1.00	5.00	40.00
GRAPTA—S. yellow brown; F. deeper shade	1.50	10.00	-----	QUEEN FLAVIA — Beautiful primrose yellow self	2.00	-----	-----
GREVIN—S. bright violet; F. rich velvety purple	2.50	-----	-----	QUEEN OF MAY—S. and F. soft rosy lilac	1.25	7.50	-----
HER MAJESTY—S. rose pink; F. lined darker	1.00	5.00	40.00	RODNEY — Beautiful uniform violet blue	1.50	10.00	-----
HIAWATHA — S. rosy lavender; rich purple	1.25	7.50	-----	RHEIN NIXE — S. white; F. violet bordered white	1.00	5.00	40.00
HONORABILIS — S. golden yellow; F. mahogany brown	1.00	5.00	40.00	ROMANY — S. pale yellow; F. bright red	1.50	10.00	-----
HUBERT—Deep crimson purple, yellow beard	2.50	-----	-----	ROMEO — S. lemon yellow; F. mauve and violet	1.50	10.00	-----
HUGO — S. petunia violet; F. deep purple	2.00	-----	-----	SEMINOLE — S. dark violet-rose; F. velvety crimson	2.00	-----	-----
IVANHOE—S. lavender violet; F. richer shade	1.25	7.50	-----	SHEKINA—S. and F. pale lemon yellow. Extra fine	1.00	5.00	40.00
JEANNE D'ARC—S. and F. white, edged lavender	2.00	-----	-----	SHERWIN WRIGHT — Beautiful bright golden yellow	1.25	7.50	-----
JUNIATA—S. and F. clear blue. Excellent	1.25	7.50	-----	SHREWSBURY — S. rosy bronze; F. violet purple	1.00	5.00	40.00
KATHRYN FRYER—S. pale yellow; F. reddish purple	2.00	-----	-----	SIMONNE WAISSIERE — S. lavender blue; F. violet blue	3.00	-----	-----
KHEDIVE — Lavender, with distinct orange beard	1.00	5.00	40.00				

# German Iris (Continued)

	Per 12	Per 100	Per 1000		Per 12	Per 100	Per 1000
SUNSET — Old gold, falls flushed blue	\$3.00	\$	---	TURCO — S. purplish lilac; F. lobelia violet	\$1.50	\$10.00	---
SWATARA — S. lobelia blue; F. bright violet	1.50	10.00	---	VIOLACEA GRANDIFLORA — Beautiful clear violet blue	1.25	7.50	---
SWEET LAVENDER—S. pale lavender; F. rose lavender	2.00	15.00	---	WALHALLA — S. pale lavender blue; F. violet purple	1.25	7.50	---
SYPHAX — S. pale violet; F. deep crimson purple	2.00	---	---	WHITE KNIGHT — The famous pure white variety	1.25	7.50	---
TOM TIT — Beautiful deep soft violet blue	1.50	10.00	---	WYOMISSING — S. creamy white; F. deep rose	2.00	---	---
TRIANON — S. pale buff; F. deeper shade	2.50	---	---	YVONNE PELLETIER — Uniform sky blue. Extra	1.25	7.50	---
TRISTRAM—S. white, tinted lavender; velvety purple	1.25	7.50	---	ZOUAVE—S. white, suffused blue; F. white	2.50	---	---
TROJANA — S. light lavender violet; F. amethyst violet	2.50	---	---	ZWANENBURG — S. cream; F. olive brown	1.25	7.50	---

# CANNAS

We offer the following sorts in dormant 2-3 eye divisions until April 15th, after which started plants only will be supplied.

## 2-3 Eye Dormant Roots

Variety	Per 12	Per 100	Per 1000
THE PRESIDENT—This splendid variety produces immense flowers of a rich, glowing scarlet; green foliage; 4 feet.....	\$0.60	\$3.50	\$30.00
KING HUMBERT—Bronze foliage, immense heads of coppery scarlet flowers, 4½ feet..	.60	3.50	30.00
YELLOW KING HUMBERT—A sport from King Humbert and a majestic variety with massive foliage; flowers golden yellow, dotted red; green foliage; 4½ feet.....	.60	3.50	30.00
MRS. ALFRED CONARD—Magnificent heads of perfectly formed flowers of good size and substance; color salmon-pink; light green foliage; 4 feet.....	.75	5.50	50.00
CITY OF PORTLAND—Flowers of large size on heavy trusses; color, glowing pink; profuse bloomer; green foliage; 4 feet.....	.75	5.50	50.00
RICHARD WALLACE—A light shade of canary yellow with delicate flecks of red. A lovely Canna. 4 feet.....	.60	3.50	30.00
APRICOT—Buff-yellow base, overspread with salmon-pink; green foliage; 4 feet.....	.60	3.50	30.00
HUNGARIA—Dwarf and compact; flowers large; rich peach blossom pink; green foliage; 3½ feet.....	.75	4.50	40.00
EUREKA—The best white variety; strong grower; green foliage; 4 feet.....	.75	4.50	40.00

# Cannas

Started Plants from Pots  
Delivered April First and Later

Variety	Per 12	Per 100	Per 1000
The President .....	\$1.00	\$6.50	\$60.00
King Humbert .....	1.00	6.50	60.00
Yellow King Humbert .....	1.00	6.50	60.00
Mrs. Alfred Conard.....	1.25	8.50	80.00
City of Portland.....	1.25	8.50	80.00
Richard Wallace .....	1.00	6.50	60.00
Apricot .....	1.00	6.50	60.00
Hungaria .....	1.25	8.50	80.00
Eureka .....	1.25	8.50	80.00

## Large Flowering Clematis

Our stock is large and in excellent condition this year. The plants are from 3 inch pots and in foliage when shipped. \$3.25 per 12; \$25.00 per 100.

- JACKMANII—Deep purple.
- HENRYII—Large white.
- MME. ED. ANDRE—Red.
- DUCHESS OF EDINBURG—Double white.
- RAMONA—Blue.
- MME. BARON VEILLARD—Rich pink.



Clematis Jackmanii

# GLADIOLUS for Forcing and Field Planting

**G & R** Gladiolus are recognized as among the best by the leading forcers. Growing conditions have been particularly favorable this year. We offer approximately three million bulbs in the best forcing varieties for spring planting. All bulbs Semesan treated, and well ripened in every particular. Compare our prices this year with those of reliable growers. We can serve you to your advantage.

	No. 1 1½" and up		No. 2 1¼" and up	
	Per 100	Per 1000	Per 100	Per 1000
ALBANIA—One of the best pure whites.....	\$2.00	\$15.00	\$1.75	\$12.00
ALICE TIPLADY (Prim.)—Rich orange; a great favorite. About 50 percent produce two flowers .....	1.75	13.50	1.50	10.00
ANTOINE—One of the best yellows ever introduced.....	3.00	25.00	2.50	20.00
BERTY SNOW—A good commercial lavender.....	2.50	20.00	2.00	16.00
BETTY NUTHALL—Orange pink with a soft yellow throat.....	2.25	18.00	2.00	15.00
GIANT NYMPH—Very large, light pink with creamy throat.....	2.25	18.00	2.00	15.00
GOLDEN DREAM—A very fine deep, pure yellow. Excellent forcer.....	3.00	25.00	2.50	20.00
JEWELL (Prim.)—Considered by many growers the best forcing Prim. A beautiful blending of salmon and yellow. Extra fine.....	2.00	15.00	1.75	12.00
LOS ANGELES—Commonly referred to as the "Cut and Come Again" Gladio- lus, due to the fact that it produces several lateral stems, all of which make good flowering spikes. Color, shrimp pink. Orange carmine throat. Los Angeles is an outstanding commercial variety.....	2.00	15.00	1.75	12.00
MRS. FRANK PENDLETON—America's leading cut flower Gladiolus. Flow- ers beautiful rose pink on a pure white ground, with deep blood red blotch on lower petals .....	2.00	15.00	1.75	12.00
MRS. LEON DOUGLAS—Very robust and strong grower with wide leaves and tall heavy spikes and flowers. The color is light rose with flakes and specks of red and scarlet with light yellow tints on lower petals. Becoming very popular .....	2.50	22.50	2.25	18.00
MRS. P. W. SISSON—A beautiful soft light pink glad.....	2.25	18.00	2.00	15.00
PEACE—Giant white flowers of great substance. Still the most widely planted commercial white .....	1.75	13.50	1.50	10.00
PICARDY—One of the most outstanding glads introduced in recent years. A most pleasing shade of soft shrimp pink, large florets slightly ruffled.....	3.00	25.00	2.50	20.00
SOUVENIR—(Prim.) A good early forcing sort. Flowers pure canary yellow of good size .....	2.00	15.00	1.75	12.00
VIRGINIA—The best red Gladiolus ever introduced. Strong stems. Brilliant scarlet .....	2.00	15.00	1.75	12.00
<b>MIXTURES</b>				
FLORISTS MIXTURE—This mixture consists of good standard commercial sorts. Do not confuse with mixtures made up of culls and old discarded sorts. We recommend "Florists' Mixture" to those wishing a good assortment at a minimum price .....	1.50	12.00	1.25	10.00
EXHIBITION MIXTURE—To those wishing the best of the newer sorts in an assortment we recommend this mixture.....	2.50	20.00	2.00	15.00
PRIMULINUS HYBRIDS IN MIXTURE—A good assortment of the best Primulinus varieties .....	1.50	13.50	1.25	10.00

## KOLKWITZIA AMABILIS THE BEAUTY BUSH

One of the newest, rarest and most beautiful of new Shrubs introduced by the Arnold Arboretum. Closely allied to the Abelia—perfectly hardy. Ultimately reaches 6 feet in height and 5 feet through, and produces its Abelia-like flowers in great profusion. 2¼ inch Pots, \$5.00 per hundred; \$45.00 per thousand.

## NEW RED-LEAVED JAPANESE BARBERRY

We are preparing a large stock of this popular new Shrub for Fall and Spring shipment, and anticipate a supply of fifty thousand excellent plants from 2¼-inch pots. Grown from Cuttings—100% true to type. Immeasurably Superior to Seedlings. 2¼ inch Pots, \$5.00 per 100; \$45.00 per 1000.



**FROM**

---

---

---

**GOOD & REESE, Inc.**

**Springfield**

**Ohio**

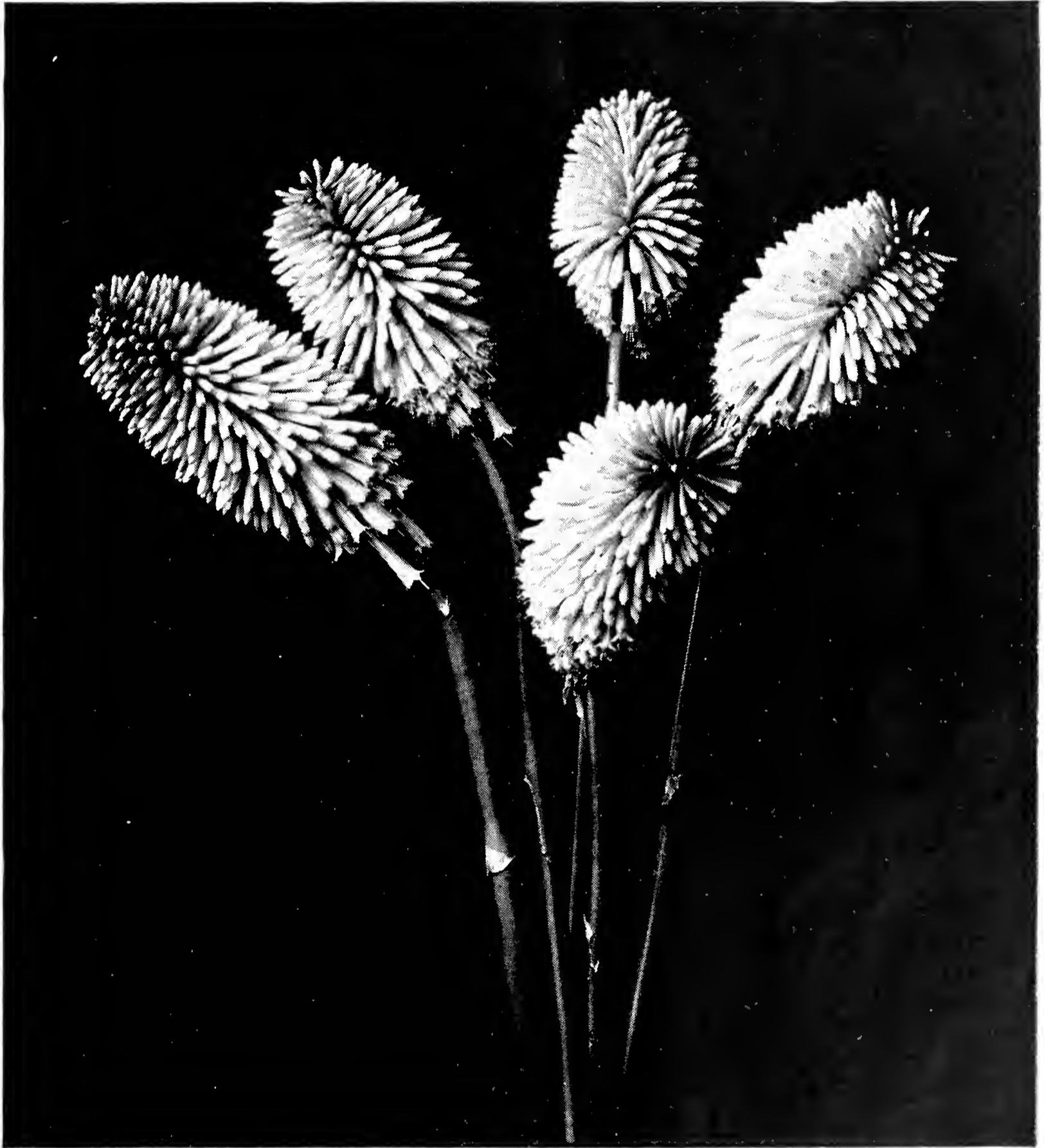






# TRITOMA TOWERS OF GOLD

## THE GOLDEN POKER PLANT



**T**OWERS OF GOLD is undoubtedly the finest Tritoma produced since Pfitzeri. Its magnificent golden yellow flowers are produced more profusely and earlier than any of the cut flower types. The flowers are larger than those of Pfitzeri and the plant is stronger and more robust in habit. Towers of Gold is particularly fine for growing for cutting during the summer months.

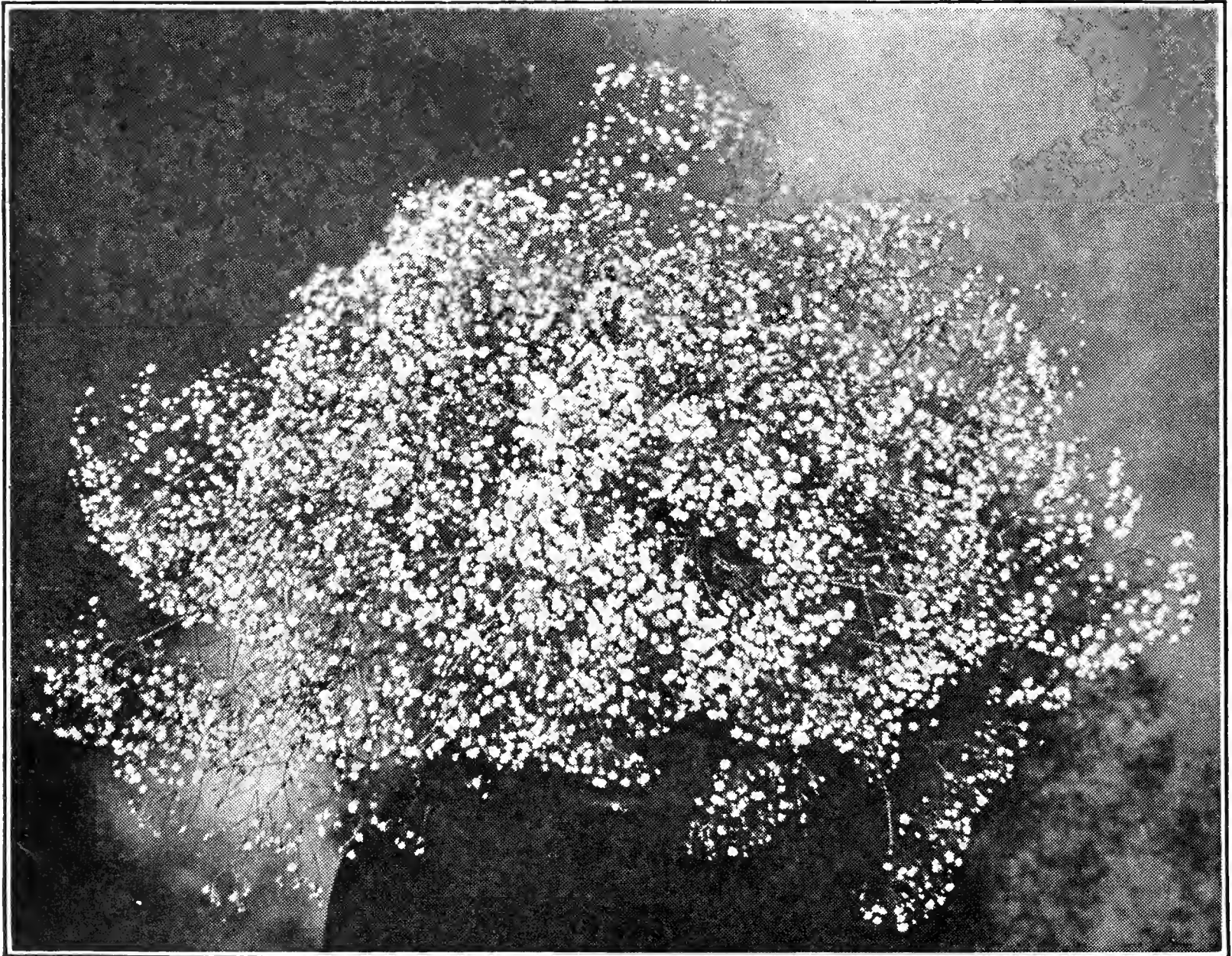
**\$3.25 per 12, \$25.00 per 100.**

# GYPHSOPHILA

## BRISTOL FAIRY

(The New Double Baby's Breath)

A FLORISTS' MONEYMAKER !



**I**N BRISTOL FAIRY we have a wonderful advance over all other types. The flowers are perfectly double, pure snow white and two to three times the size of *Gypsophila paniculata flore plena*. Bristol Fairy blooms early and continues to throw up flowers from the base, bearing fine sprays from June until killing frost. The dried flowers retain their pearly whiteness throughout the winter so that they can be depended upon to lighten the stiffness and formality of winter bouquets.

**FOR DELIVERY FEBRUARY AND LATER**

**Strong Grafted Plants from 3-Inch Pots**

**\$2.50 per 12, \$17.50 per 100, \$150.00 per 1000**

**(200 UP AT 1000 RATE)**

Bristol Fairy is the better Gypsophila. Place your order now.  
Due to low price, our supply will be exhausted early.

**GOOD & REESE, Inc.**

*America's Largest Growers of Greenhouse Plants*

**SPRINGFIELD, OHIO**